

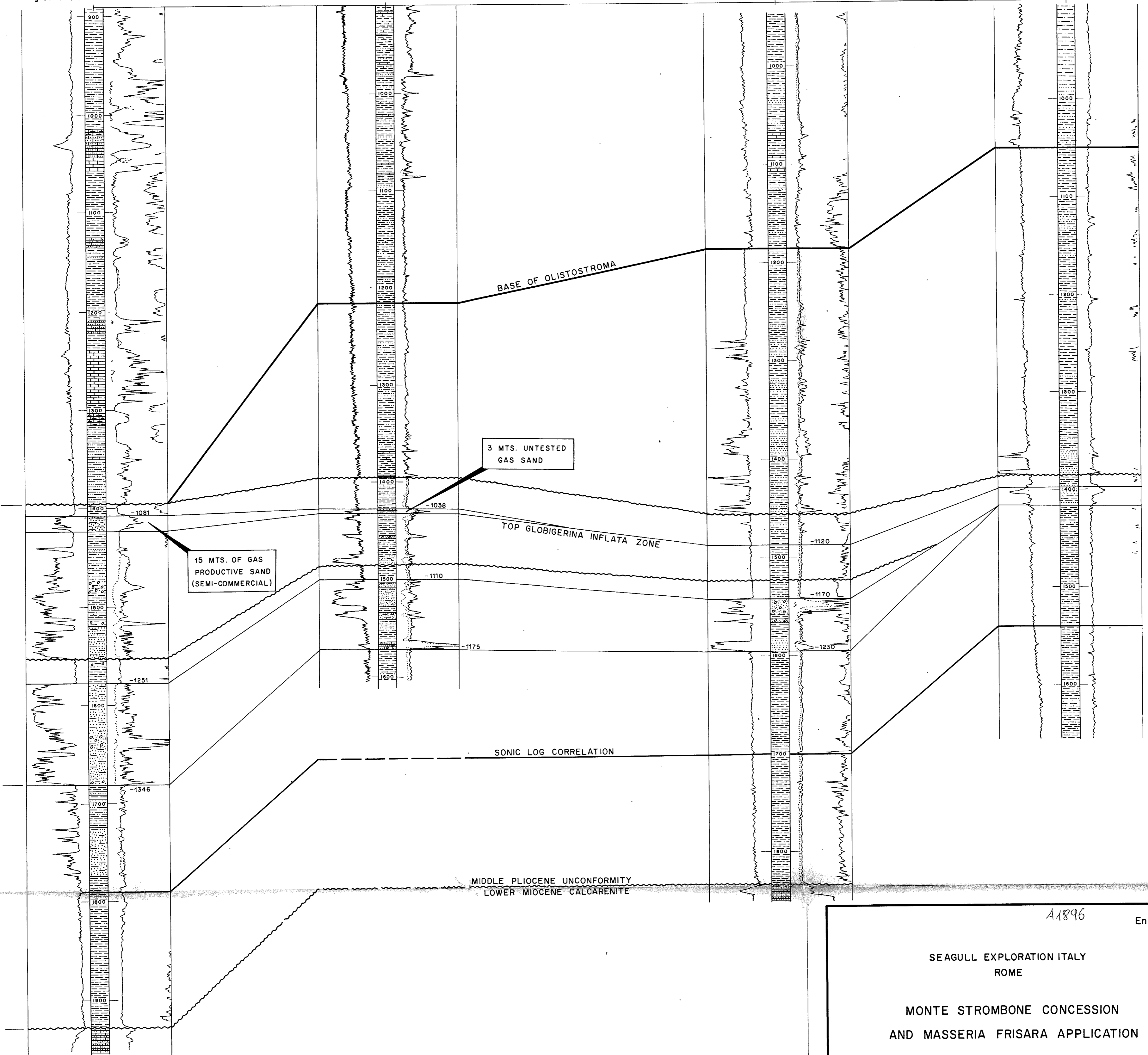
MONTE STROMBONE 1

SAN CHIRICO - 3  
ground elevation 324 mts.

ground elevation 390 mts.

SAN CHIRICO - 1  
ground elevation 370 mts.

SAN CHIRICO - 2  
ground elevation 339 mts.



41896

Encl. 4

SEAGULL EXPLORATION ITALY  
ROME

MONTE STROMBONE CONCESSION  
AND MASSERIA FRISARA APPLICATION

**ELECTRIC LOG AND STRATIGRAPHIC  
CORRELATION OF**

SAN CHIRICO 1-2-3 AND  
MONTE STROMBONE 1 WELLS

- LEGEND -

- Clay or marl
- Sand or sandstone
- Shaly sand
- Limestone
- Calcarenite
- Unconformity
- Gas sand
- 1250 Depth below sea level in meters

INDEX MAP  
SCALE 1:100,000

