

A1847

All. 5



RPN THICK(M)/VEL(M/S) REP VELL(M/S)

156
3.0/500
3.0/833
2431

302
6.0/714
7.0/1800
2336

452
7.0/648
1.0/1667
2097

RPN THICK(M)/VEL(M/S) REP VELL(M/S)

LASMO INTERNATIONAL OIL DEV LTD LINE RM-88-02

SPN RANGE - 499 TO 137
CDP RANGE - 101 TO 822
PROSPECT - ROMAGNA ITALY

FILTERED STACK (F-X ENHANCE)

FIELD DATA

SHOT BY: GEOSITALIA PARTY - G11 - 4
DATE SHOT: OCTOBER 1988
RECORDING INSTRUMENT: SEC B 4250 RPI
FILTERS LOW
SAMPLE RATE: 37.5 MSEC
ENERGY SOURCE: DYNAMICITE
CHARGE SIZE: 65 KG
GEOPHONES: 80 M ARRAY
GROUP INTERVAL: 30 METRES
INTENDED MULTIPLICITY: 24 FOLD

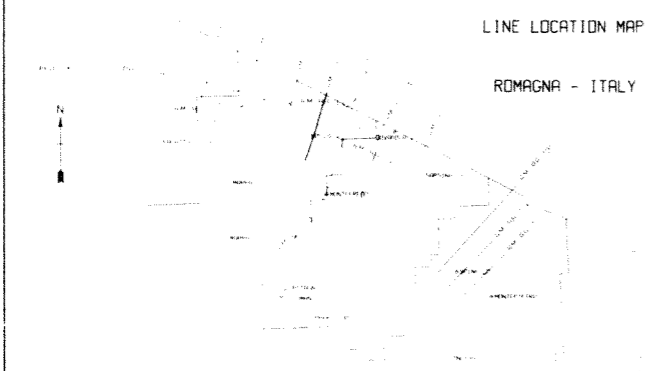
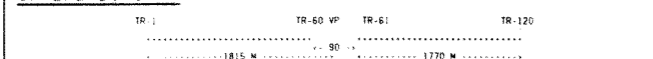
DIGITAL PROCESSING

POLARITY CONVENTION: NEGATIVE NUMBER ON TRACE REPRESENTED AS A WHITE THROUGH
PROCESSING RECORD LENGTH: 8 SECONDS AT 4 MSEC SAMPLE RATE
PRE DECONVOLUTION NOTE: 150 MSEC
TRUE AMPLITUDE RECOVERY: SPHERICAL DIVERGENCE AND ELASTIC ATTENUATION CORRECTION - 40 MPH 4 30/SEC APPLIED TO 0 SEC
STATIC COMPUTATION: LOW FREQUENCY STATIC PROFILE DERIVED FROM FIELD STATICS
RESIDUAL RECEIVER STATICS: HIGH FREQUENCY STATICS DERIVED USING GSI INTERACTIVE REFRACTION STATICS PACKAGE (RPN01)
RESIDUAL SHOT STATICS: STATICS PROFILES SUPERIMPOSED TO PRODUCE BROADBAND STATICS
VELOCITY FILTER: 3 ITERATIONS SURFACE CONSISTENT STATICS
TIME VARIANT SCALING: KEEP ZONE 24.8 MSEC/SPACE FULL CODING TAPER
STATIC APPLICATION: 33 CDP VELOCITIES WITH 10 VELOCITY FUNCTIONS
NORMAL MOVEOUT CORRECTION: USING ANNOTATED SURFACE REFERENCED VELOCITIES
BAND PASS FILTERING: 0.20-80.00 HZ
TIME VARIANT SCALING: GATE LENGTHS 200, 200, 200, 500, 500, 1000, 1000 MSEC
GATE 1 START TIME -100 MSEC DATUM REFERENCED

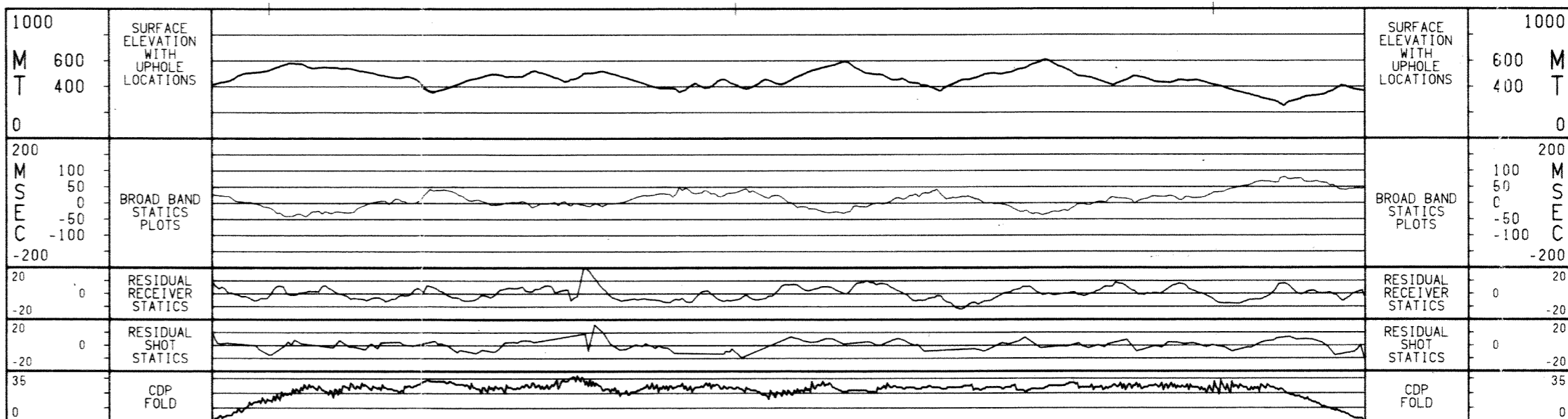
DISPLAY

POLARITY: NORMAL
TRACE TYPE: 80%
DATUM: 100 M ABOVE MEAN SEA LEVEL
HORIZONTAL SCALE: 1:50000
DISPLAY UNIT: 100 M
GAIN: 1000

SPREAD DIAGRAM



24 NOV 1988 17:23:34 PARTY 4882
GEOPHYSICAL SERVICE INTERNATIONAL LTD
PROCESSING PERFORMED BY: MIKE GOODWIN



CDP	SPN	TIME	VRMS	INTVEL
MSEC		MSEC	MT/SEC	MT/SEC
0	2796	0	2912	0
304	2879	304	3018	304
602	3020	602	2948	602
905	3170	905	3170	905
1034	3314	1034	3383	1034
1354	3575	1354	3811	1354
1667	3504	1667	4209	1667
1988	3587	1988	4298	1988
2243	3981	2243	4348	2243
2586	4348	2586	4740	2586
3012	4588	3012	4834	3012
4000	4997	4000	5004	4000

