



RPN THICK(M)/VEL(M/S) REP VELL(M/S) 156 3 0/500 3 0/533 2431

302 6 0/714 7 0/1800 2336

452 7 0/649 1 0/1967 2097

RPN THICK(M)/VEL(M/S) REP VELL(M/S)

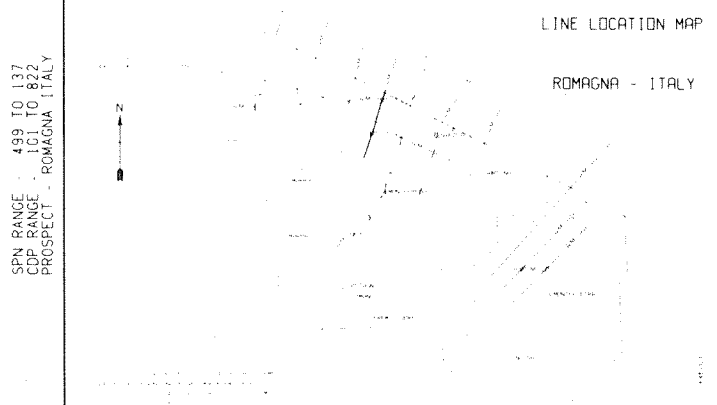
LASMO INTERNATIONAL OIL DEV LTD LINE RM-88-02 SPN RANGE - 499 TO 137 CDP RANGE - 101 TO 822 PROSPECT - ROMAGNA ITALY

FILTERED STACK (F-X ENHANCE) FIELD DATA: SHOT BY, DATE SHOT, RECORDING INSTRUMENT, FILTERS, SAMPLE RATE, ENERGY SOURCE, CHARGE SIZE, CHARGE DEPTH, GEOPHONES, GROUP INTERVAL, EXTENDED MULTIPLICITY

DIGITAL PROCESSING: POLARITY CONVENTION, PROCESSING RECORD LENGTH, PRE DECONVOLUTION MUTE, TRUE AMPLITUDE RECOVERY, STATIC COMPUTATION, RESIDUAL STATIC COMPUTATION, VELOCITY FILTER, TIME VARIANT DECONVOLUTION, TIME VARIANT SCALING, STATIC APPLICATION, VELOCITY ANALYSIS, NORMAL MOVEOUT CORRECTION, STATIC APPLICATION, FIRST BREAK SUPPRESSION MUTE, CDP STACK, F-X ENHANCE, BAND PASS FILTERING, TIME VARIANT SCALING

DISPLAY: POLARITY, TRAIL TYPE, BIAS, WIGWAG, 20 PERCENT, DATUM, 100 M ABOVE MEAN SEA LEVEL, DISPLAY UNIT, 0.007619 CM, HORIZONTAL SCALE, 1:50000

SPREAD DIAGRAM: 10 15 20 25 30 35 40 45 50 55 60 65 70 75 80 85 90 95 100



24 NOV 1989 11 23 34 PARTY 4882 GEOPHYSICAL SERVICE INTERNATIONAL LTD PROCESSING PERFORMED BY MIKE GOODWIN

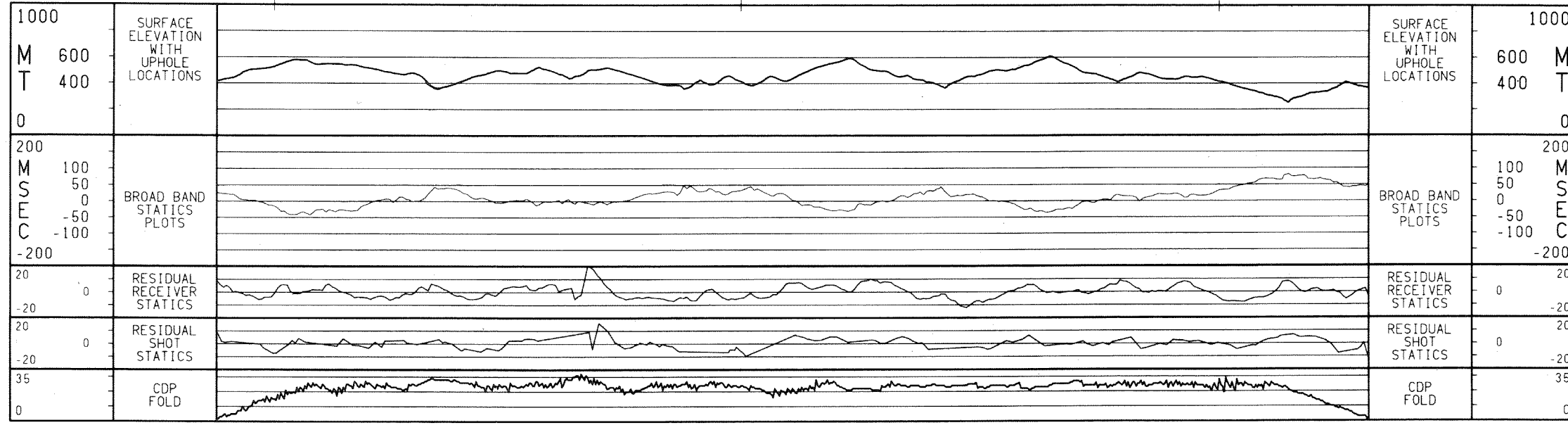
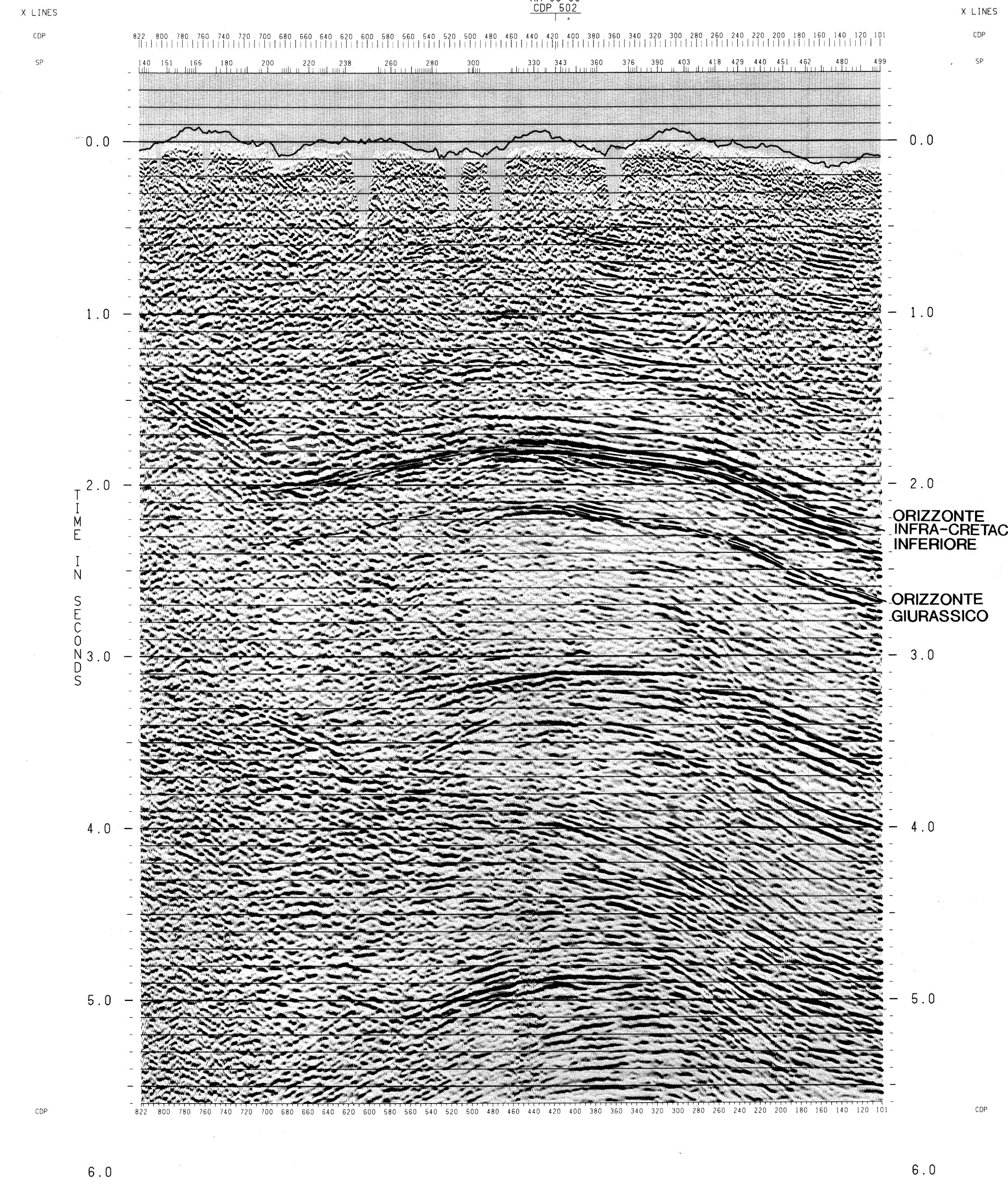


Table with 6 columns: CDP SPN, TIME, VRMS, INTVEL, MSEC, MT/SEC. It contains velocity data for various CDP stations.



FILTERED STACK (F-X ENHANCE) LINE RM-88-02

FILTERED STACK (F-X ENHANCE) LINE RM-88-02