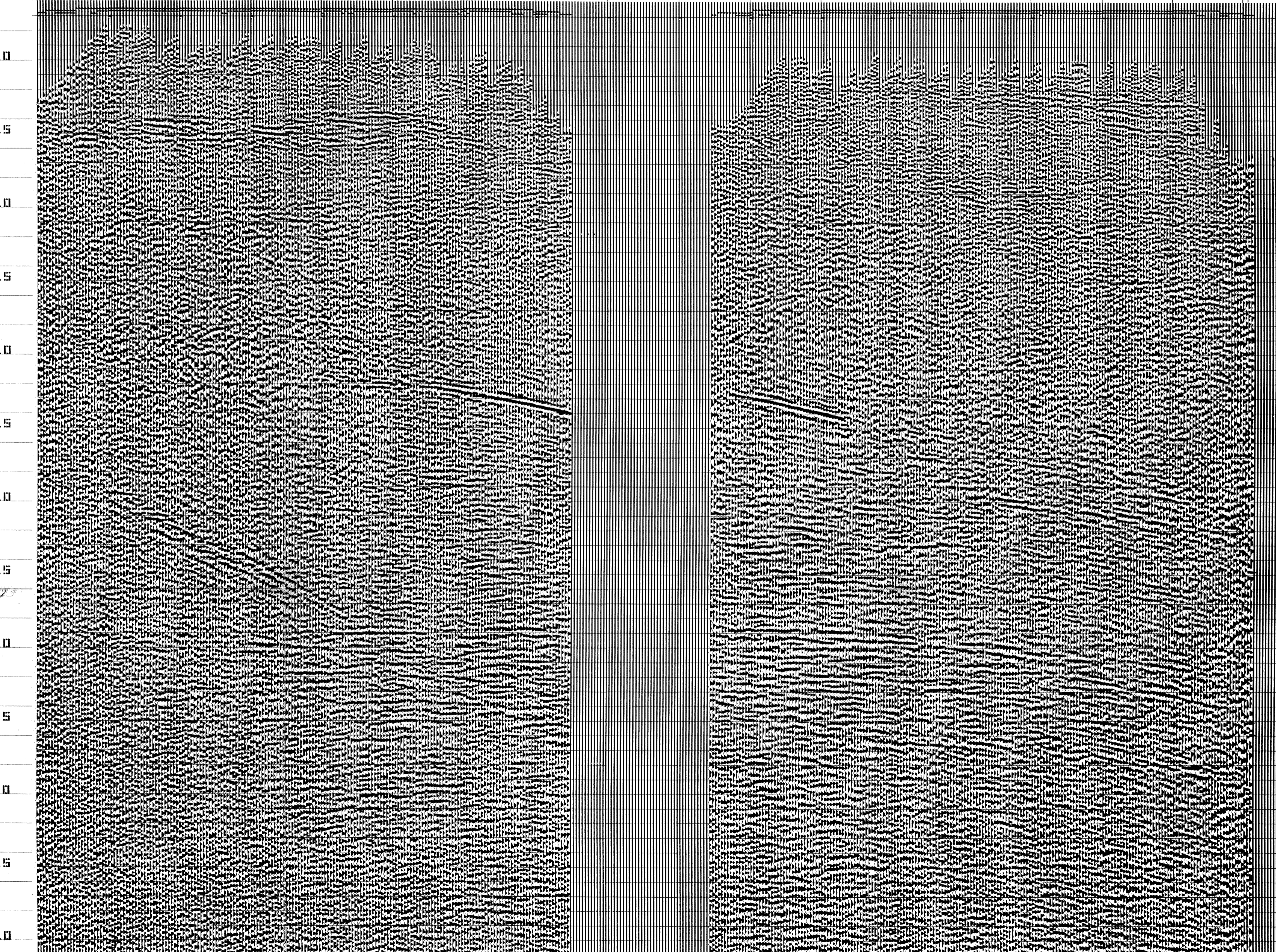


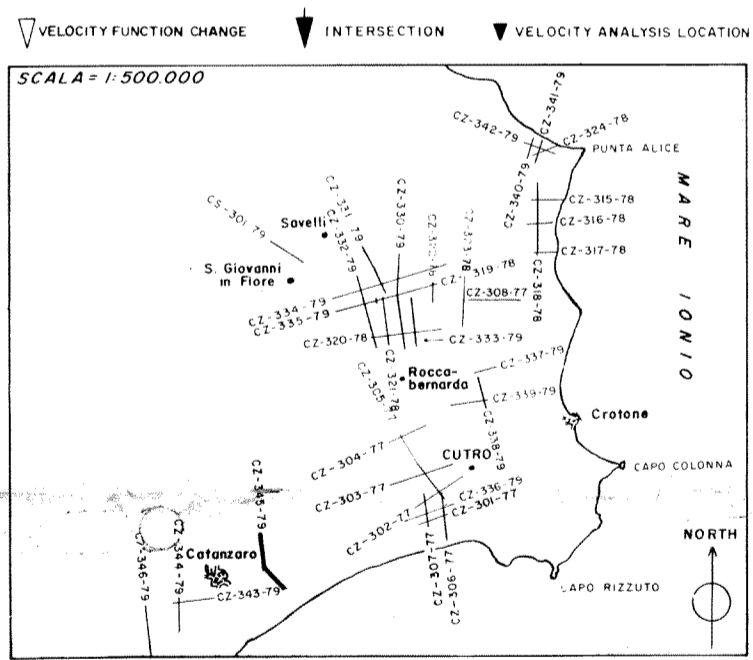
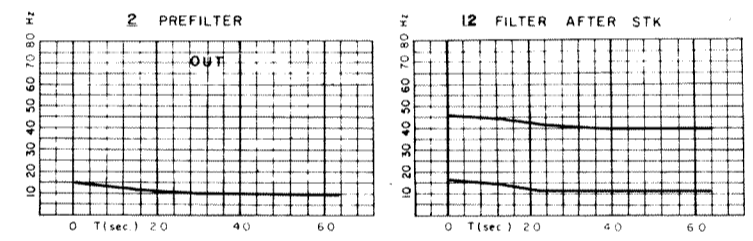
TIME	RMSV	TIME	RMSV	TIME	RMSV	TIME	RMSV	TIME	RMSV	TIME	RMSV	TIME	RMSV	TIME	RMSV
0.200	2250	0.200	2250	0.200	2300	0.200	2300	0.200	2300	0.200	2300	0.200	2300	0.200	2100
0.800	2800	0.800	2800	0.800	2850	0.800	2850	0.800	2850	0.800	2850	0.800	2850	0.800	1850
1.200	3100	1.200	3100	1.200	3150	1.200	3150	1.200	3150	1.200	3150	1.200	3150	1.200	2100
1.400	3250	1.400	3250	1.400	3300	1.400	3300	1.400	3300	1.400	3300	1.400	3300	1.400	2100
1.600	3400	1.600	3400	1.600	3450	1.600	3450	1.600	3450	1.600	3450	1.600	3450	1.600	2700
2.000	3800	2.000	3800	2.000	3850	2.000	3850	2.000	3850	2.000	3850	2.000	3850	2.000	3000
2.200	4000	2.200	4000	2.200	4050	2.200	4050	2.200	4050	2.200	4050	2.200	4050	2.200	3450
2.400	4200	2.400	4200	2.400	4250	2.400	4250	2.400	4250	2.400	4250	2.400	4250	2.400	3450
2.600	4400	2.600	4400	2.600	4450	2.600	4450	2.600	4450	2.600	4450	2.600	4450	2.600	3450
2.800	4600	2.800	4600	2.800	4650	2.800	4650	2.800	4650	2.800	4650	2.800	4650	2.800	3450
3.000	4800	3.000	4800	3.000	4850	3.000	4850	3.000	4850	3.000	4850	3.000	4850	3.000	3450
3.200	4800	3.200	4800	3.200	4800	3.200	4800	3.200	4800	3.200	4800	3.200	4800	3.200	4800
3.400	4800	3.400	4800	3.400	4800	3.400	4800	3.400	4800	3.400	4800	3.400	4800	3.400	4800



RECORDING DATA		PLAYBACK DATA	
SHOT BY	WESTERN	SAMPLE RATE	4 ms
PARTY	F-91	RECORD LENGTH	6400 ms
MAGNETIC RECORDER	DOS-888 COBA-1	AMPLITUDE	19
GAIN	I.F.P.	WEATHERING VEL	600 m/sec
SAMPLE RATE	2 ms	SUBWEATHERING VEL	2500 m/sec
RECORD LENGTH	7000 ms	DATUM PLANE	SEA LEVEL
FILTER	124 Hz	Scale (VERTICAL)	1 Sec 10.00 cm
ALIASING FILTER	124 Hz	Scale (HORIZONTAL)	1 Km 8.00 cm
SUBSURFACE COVERAGE	80%	PREPROCESSOR REEL No.	83708
DATE	JULY, 1979	STACK REEL No.	83206
		DATE	NOVEMBER, 1979

FIELD DATA		SKETCH	
SPREAD CONFIGURATION	2400 - 50 m	SP	48
		SP	50+1
ENERGY SOURCE			
SHOT HOLES / SP	1		
AVERAGE CHARGE / SHOT	18 Kg.		
AVERAGE SHOT DEPTH	27 m.		
GEOPHONE PATTERN			
GROUP INTERVAL	50 m.		
GEOPHONES / GROUP	24		
GEOPHONE FREQUENCY	14 Hz.		

PROCESSING	
TRANSCRIPTION	RESIDUAL STATICS
EDIT DEMULTIPLEX ONLY	MANUAL
EDIT GEOPHONE AMPLITUDE	80% SURFACE CONSISTENT
	10 C.D.P. METHOD
CORRELATION	11 STACK
PREPROCESSOR	WEIGHTED STACK
DYNAMIC CORRECTION	SPECIAL GAIN ROUTINE
STRAIGHT RAY	SPECIAL MUTE (STRATIGRAPHY DEPENDENT)
CURVED RAY	MULTICHANNEL FILTER (PASS)
	MULTICHANNEL FILTER (REJECT)
STATIC CORRECTIONS	MIGRATION
	DEPTH CONVERSION
PRELIMINARY STACK	
YES/100% CORRECTED	
VELOCITY ANALYSIS	DISTANCE DEPENDENT MUTE
CONTINUOUS VELOCITY ANALYSIS	DIST (m) MUTE (ms)
PREDICTIVE TIME DOMAIN DECON	PREDICTION DISTANCE OPERATOR LENGTH No. WINDOWS
BEFORE STACK	24 160 3
AFTER STACK	



ANALYST *Sing*