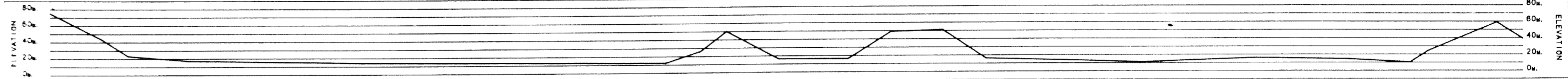
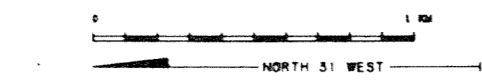


Allegato 2 Data Luglio 1981 Disegno n° 393/3

LINE MC-314-77 S.P. 296 S.P. 126

1200% DBS-TV F REFERENCE 230677/2

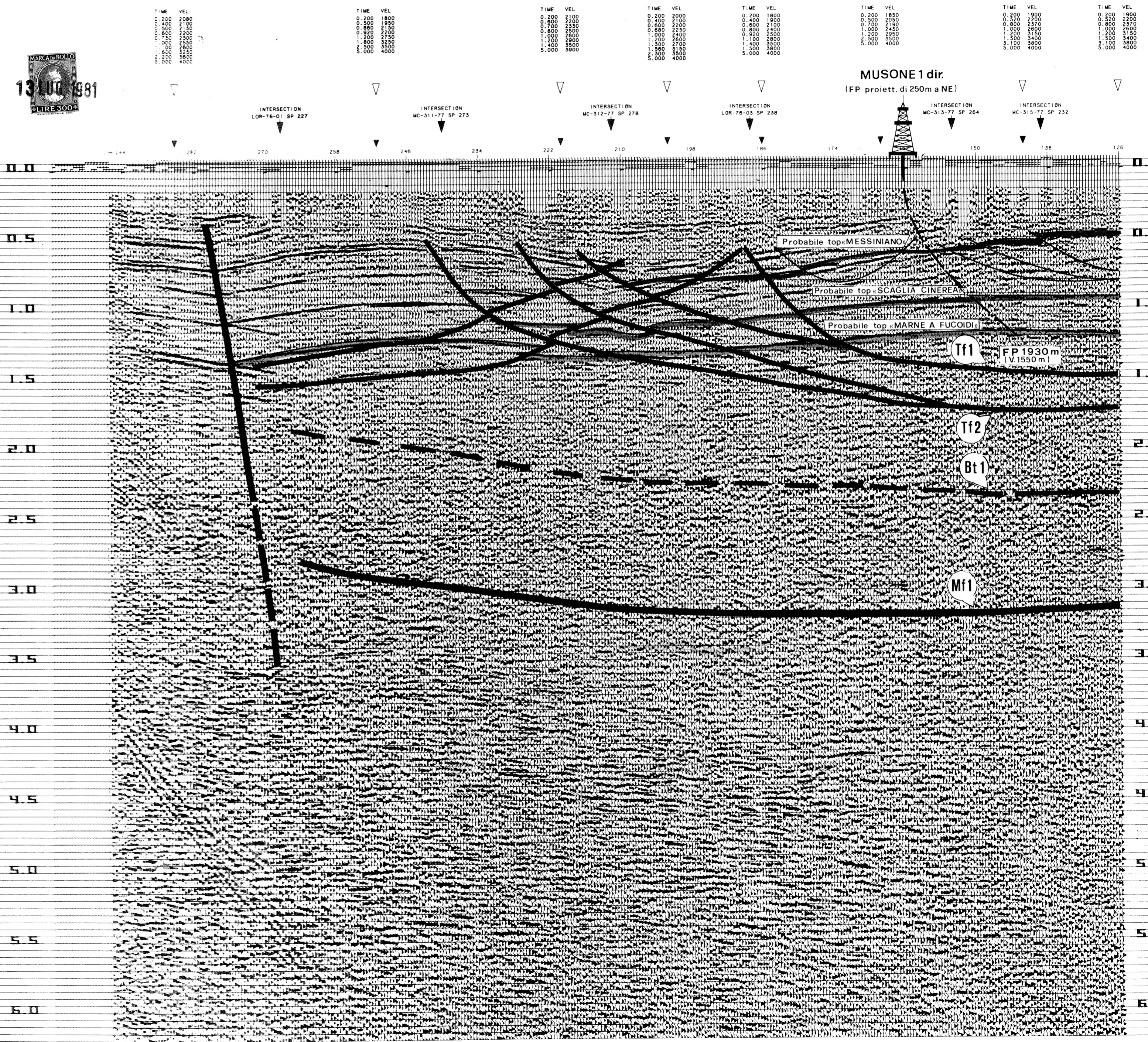
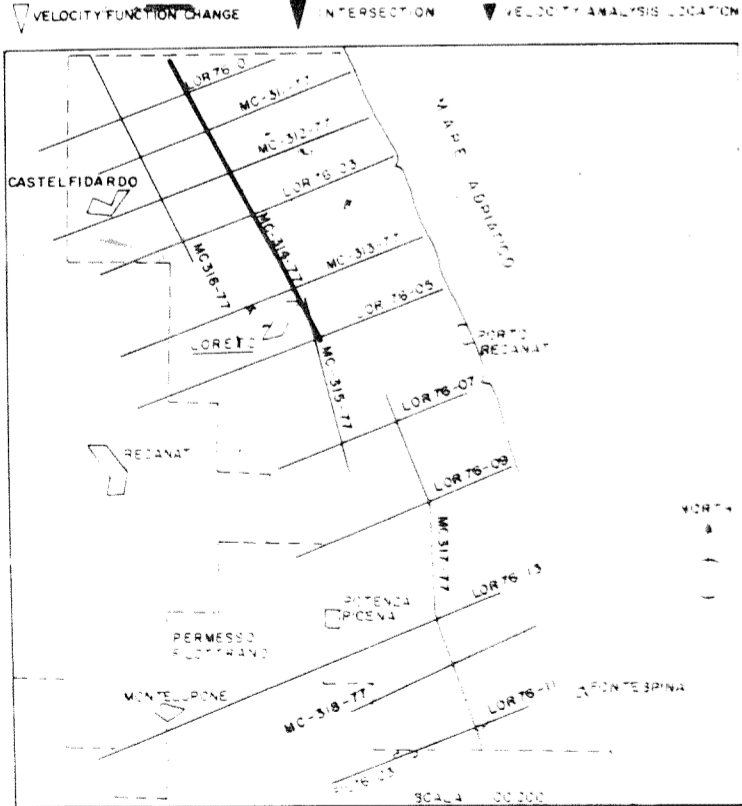
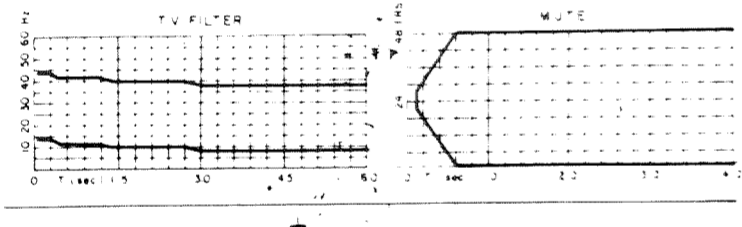
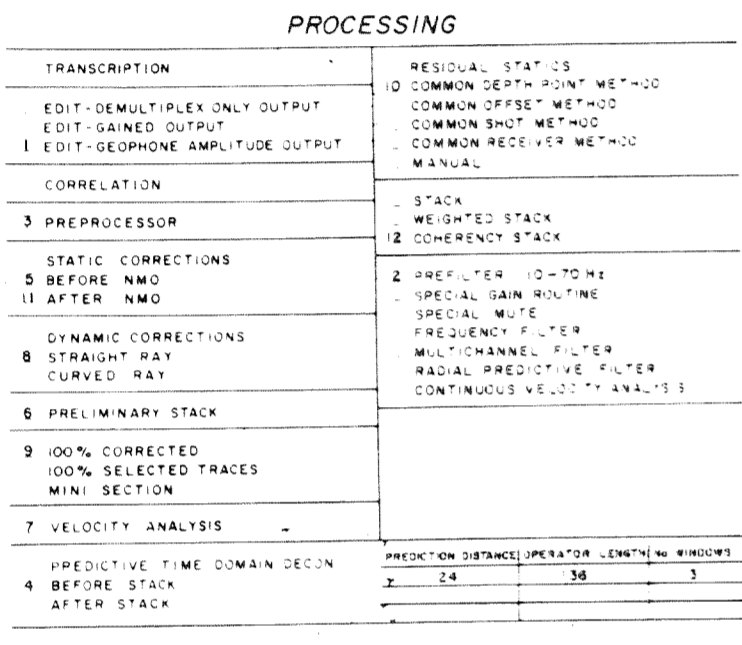


Agip AREA ITALIA-ZONA3 WESTERN R.C. RICERCA GEOFISICHE S.p.A. PROSPECT LORETO

RECORDING DATA	PLAYBACK DATA
SHOT BY PARTY: WESTERN (FBI)	SAMPLE RATE: 4 m.s.
MAGNETIC RECORDER: D.D.S. 888	RECORD LENGTH: 6200 m.s.
GAIN: 2	WEATHERING VEL: 600 m/s
SAMPLE RATE: 2 m.s.	SUBWEATHERING VEL: 2500 m/s
RECORD LENGTH: 7000 m.s.	DATUM PLANE: SEA LEVEL
FILTER (H): 125 Hz	SCALING: VERTICAL 100, HORIZONTAL 100
FILTER (L): 12 Hz	PREPROCESSOR REEL NO: 85.52
ALIASING FILTER: 125 Hz	STACK REEL NO: 83588
SUBSURFACE COVERAGE: 1200%	DATE: JUNE, 1977

FIELD DATA	SKETCH
SPREAD CONFIGURATION: 1275-125/125-1275 m.	Scale: 1:150m
ENERGY SOURCE: DYNAMITE	
SHOT HOLES / SP: 4	
AVERAGE CHARGE SHOT: 27 m.	
AVERAGE SHOT DEPTH: 27 m.	
GEOPHONE PATTERN: 50 m.	
GROUP INTERVAL: 24	
GEOPHONES/GROUP: 10	
GEOPHONE FREQUENCY: 10 Hz.	

PROCESSING
TRANSCRIPTION: RESIDUAL STAT. OS
EDIT-DEMULTIPLEX ONLY OUTPUT: 10 COMMON DEPTH POINT METHOD
EDIT-GAINED OUTPUT: COMMON OFFSET METHOD
EDIT-GEOPHONE AMPLITUDE OUTPUT: COMMON SHOT METHOD
CORRELATION: COMMON RECEIVER METHOD
PREPROCESSOR: MANUAL
STATIC CORRECTIONS: STACK
5 BEFORE NMO: WEIGHTED STACK
11 AFTER NMO: 12 COHERENCY STACK
DYNAMIC CORRECTIONS: 2 PREFILTER 10-70 Hz
8 STRAIGHT RAY: SPECIAL GAIN ROUTINE
CURVED RAY: SPECIAL MUTE
PRELIMINARY STACK: FREQUENCY FILTER
100% CORRECTED: MULTICHANNEL FILTER
100% SELECTED TRACES: RADIAL PREDICTIVE FILTER
MINI SECTION: CONTINUOUS VELOCITY ANALYSIS
VELOCITY ANALYSIS: PREDICTION DISTANCE OPERATOR LENGTH IN WINDOWS
PREDICTIVE TIME DOMAIN DECON: 2 24 36 3
4 BEFORE STACK: AFTER STACK



LINE MC-314-77 SP 296 S.P. 126 1200% DBS-TV F

ELEVATION 80m 60m 40m 20m 0m