

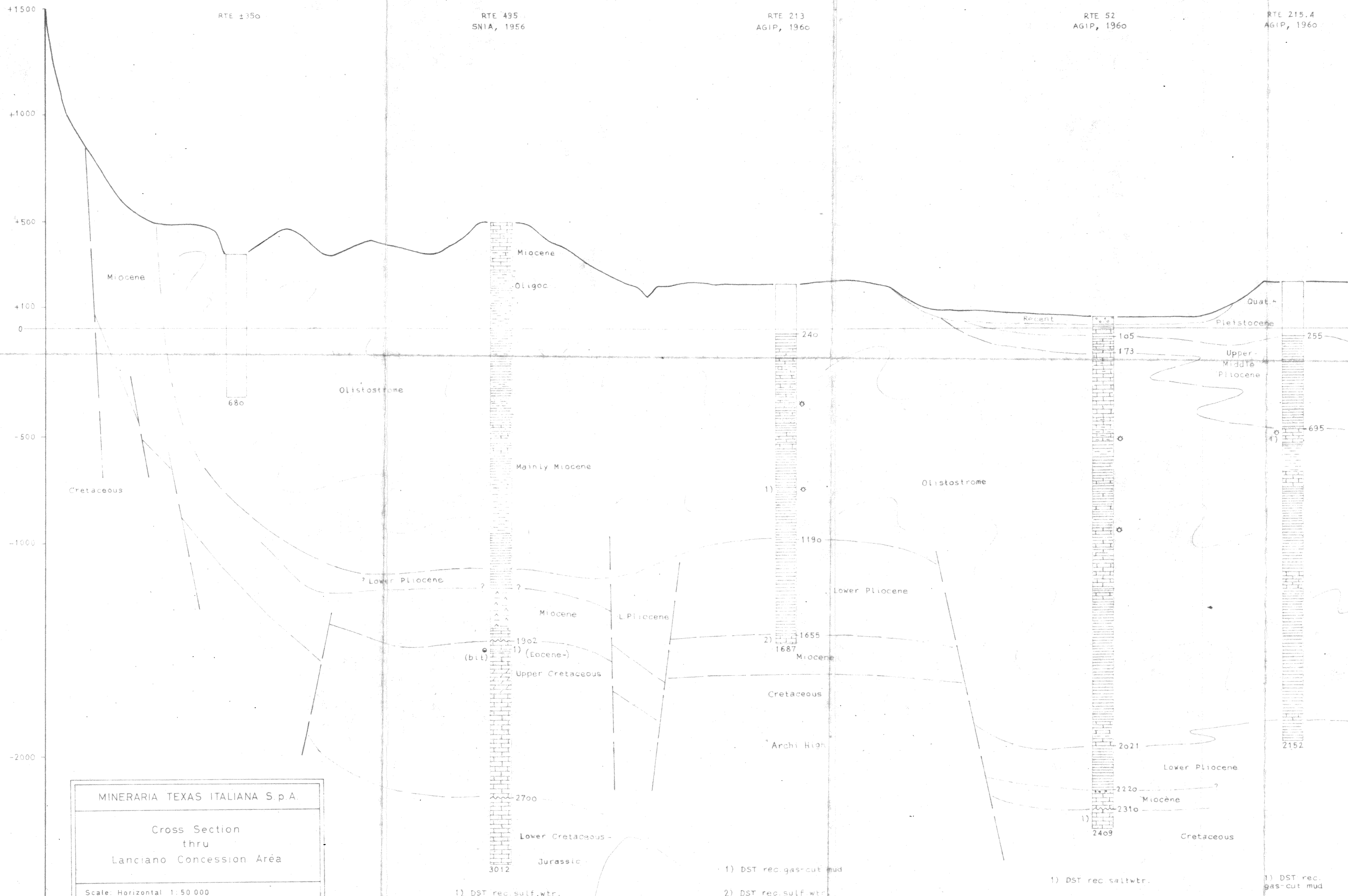
Martino-1  
RTE ±350

Sangro-1  
RTE 495  
SNIA, 1956

Perano-1  
RTE 213  
AGIP, 1960

Marcone-1  
RTE 52  
AGIP, 1960

Paglieta-3  
RTE 215.4  
AGIP, 1960



MINERARIA TEXAS ITALIANA S.p.A.

Cross Section  
thru  
Lanciano Concession Area

Scale: Horizontal 1:50 000  
Vertical 1:10 000

Elevations and depths in Meters

M.P.S., June, 1971      ENCLOSURE 5