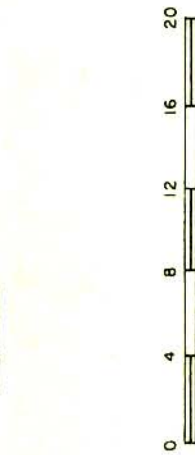
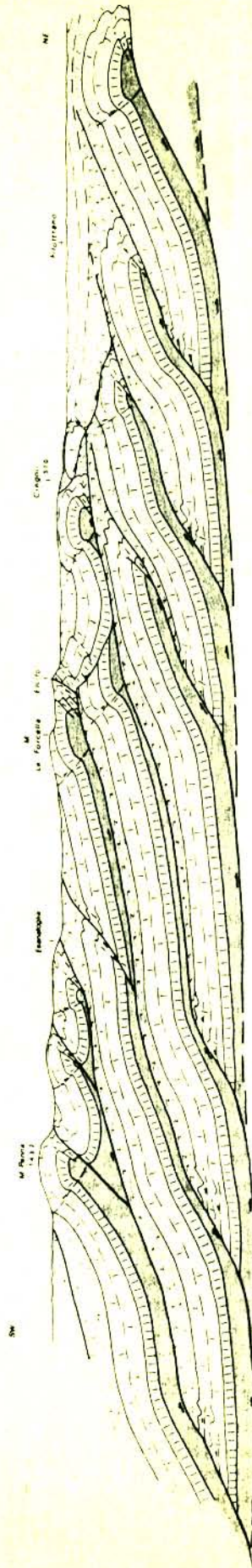


PROFILO ATTRAVERSO L'APPENNINO UMBRO - MARCHIGIANO SETTENTRIONALE



- Successione plio-quaternaria postagressiva
- Successione miocenica (mio-pliocenica a est di Cingoli)
- Successione mesozoico-paleogenica
- Calcare massiccio ( Lias inf. )
- Evaporiti triassiche



289986

