

COLLECORVINO 1

FT-3-75

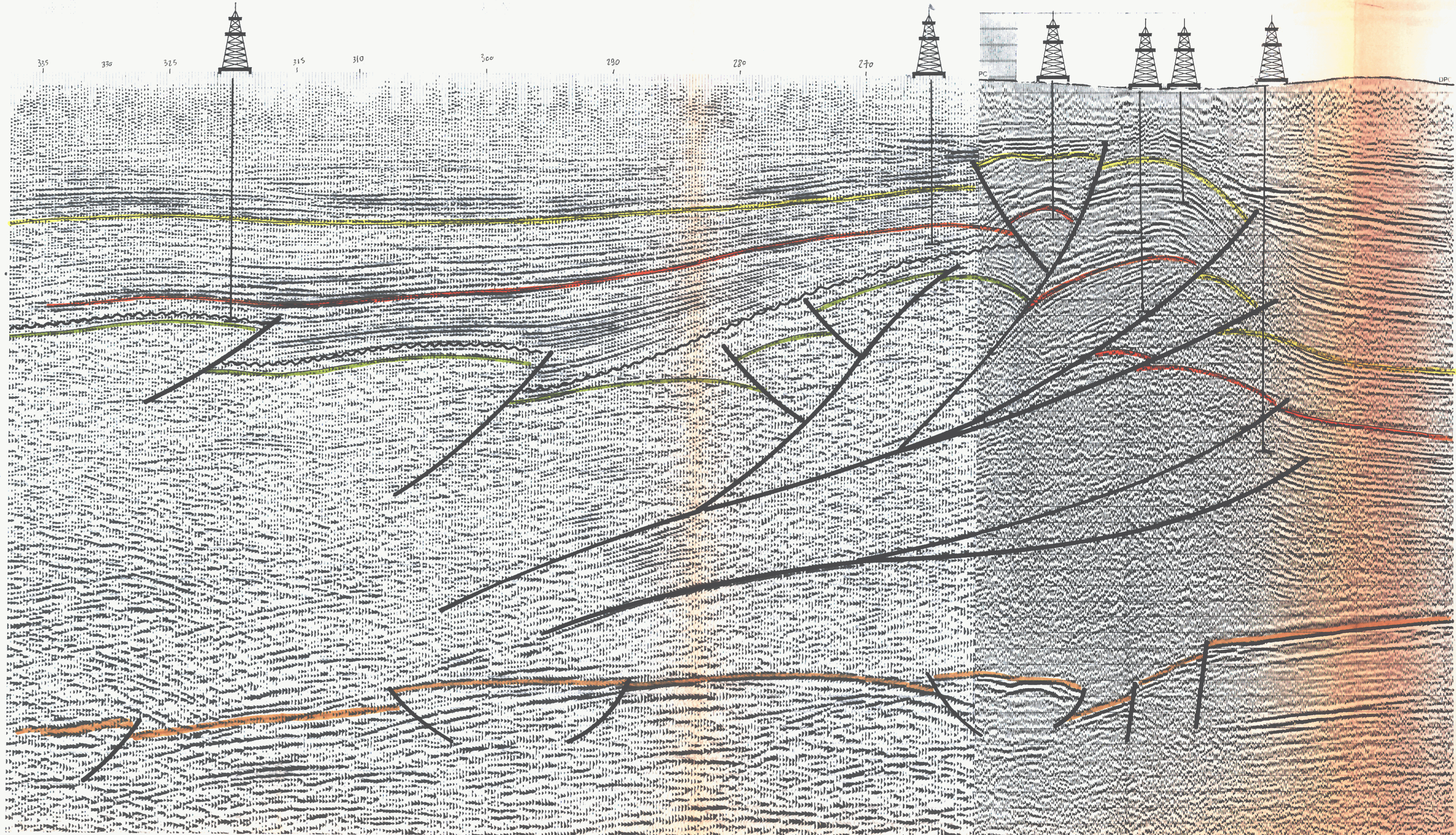
MONTESILVANO 1

LIQUORIZIA 1






CAPELLE 3

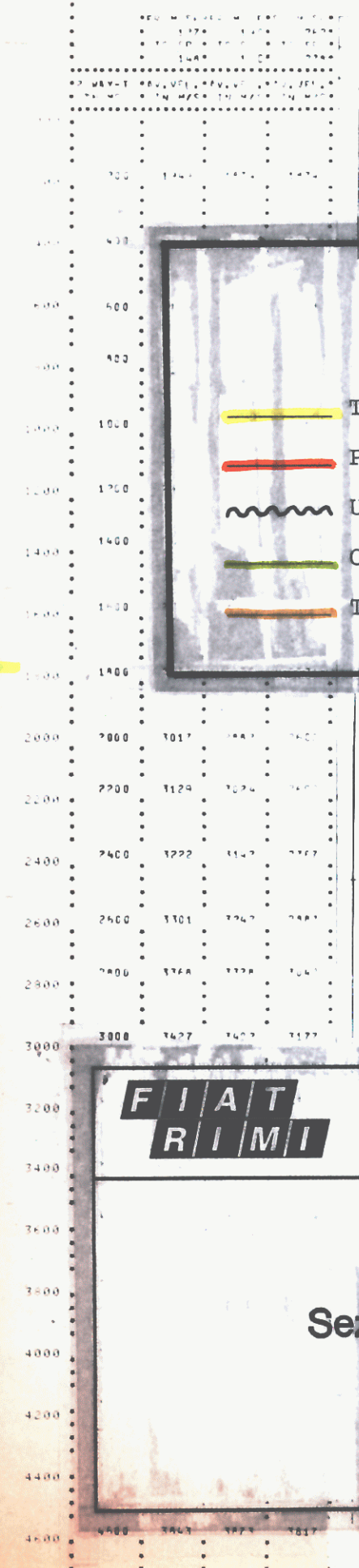
MS-2

SANTONIO 1



LEGENDA

-  Tetto del Pliocene medio
-  Probabile tetto del Pliocene inferiore
-  Unconformity infra-Pliocene inferiore
-  Orizzonte nel Pliocene inferiore
-  Tetto del substrato pre-pliocenico



FIAT RIMI s.p.a.
 ESPLORAZIONE
 Il Responsabile
 Dr. W. Paltrinieri

Paltrinieri

A1613
 A1616



MILANO

DATA 28-OCT-94

Permesso
FORTE DI MORO
 Sezione sismica rappresentativa
 FT-3-75 / MS-2