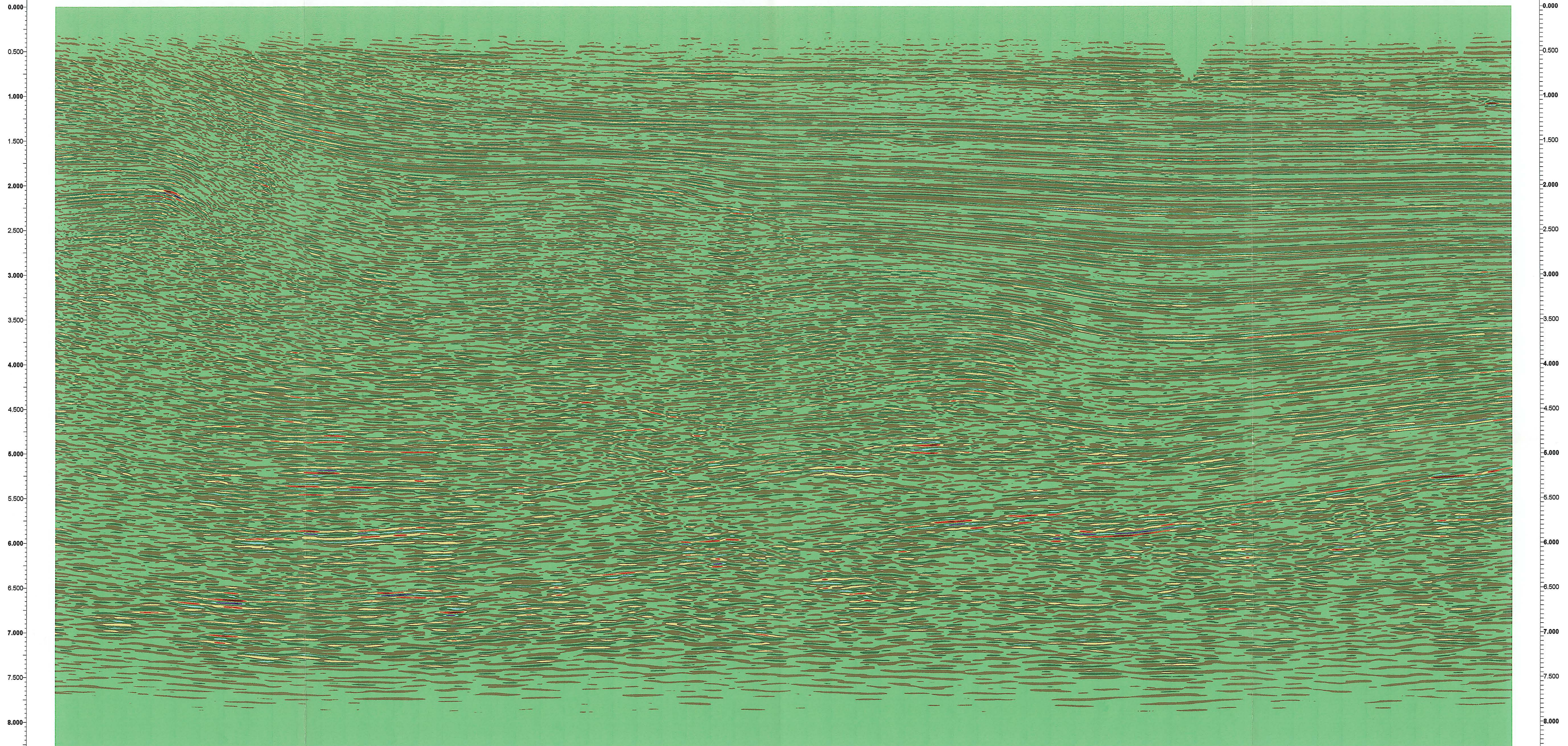


RE-91-383, 1389.35  
-RE-91-386-  
1050.0

SP: 231.0 250.0 300.0 350.0 400.0 450.0 500.0 550.0 600.0 650.0 700.0 750.0 800.0 850.0 900.0 950.0 1000.0 1050.0 1100.0 1150.0 1200.0 1250.0 1300.0 1350.0 1400.0 1450.0 1500.0 1550.0 1600.0 1650.0 1700.0 1750.0 1800.0 1829.0



FOREST OIL INTERNATIONAL  
Italy Po Valley Castelnovo Di Sotto  
RE-91-386  
Line RE-91-386, Inversion  
Reprocessed from original AGIP  
data records  
Horizontal scale = 20 traces/cm  
Vertical scale = 4 cm/second



? A118