

SORI

LINEA AV-342-80

REPROCESSING 1985
AREA PERMIT
STN. 229-601 D.P. 1-1463
PRESENTATION T.V.F.
TRIESTE DATA PROCESSING CENTRE



Data	Dis. N°	Allegato
Ottobre 1988	552/B3	2



RECORDING PARAMETERS		RECORDING GEOMETRY	
PARTY	SUS 3	ENERGY SOURCE	DYNAMITE
RECORDING DATE	MAY-JUNE 1980	SOURCE PATTERN	SINGLE CHARGE
INSTRUMENT	SUS-RUS 96 CH	SOURCE CHARACTER	8 KB / 27 METRES
DATA LENGTH	6 SECONDS	STATION INTERVAL	40 METRES
SAMPLE RATE	2 MILLISECONDS	GEOPHONE	SENSORS SH-1047
FIELD FILTERS	LIMIT 1042-2400V/C	GEOPHONE PATTERN	IN-LINE 18244 M
	ANTI-ALIAS 1600	SPREAD	96 TRACES SPLT 1900-30-00-1900 M
	50HZ NOTCH BUT	DEPTH	400 M
FIELD REEL LIST	1500/04/05/06/07/08	COVERAGE	1200M
FIELD POINT	95-8	SHOTLINE DIRECTION	EAST

PROCESSING SEQUENCE	
DEFOCUS	AREA 70 SEC - 30 BIT FLOATING POINT
DATA RECEIPT	REVIEW OF FIELD DATA
EDITING	30/120HZ (CV 3400) ANTI-ALIAS FILTER AND RESAMPLE TO 4MS
AMPLITUDE RECEIPT	USING GAIN CURVE (SHENON 11-2300LBS/10T)
QUALITY CONTROL	SECTIONAL DISPLAY OF ALL RECORDS FOR TRACE EDITING
SCALE IN DBIT	REARRANGE TRACES IN DEPTH/POINT ORDER
DECONVOLUTION	SPREAD IN LENGTH 240MS INCLUDING PREDICTION DISTANCE USING 25 WHITE NOISE
	DESIGN WINDOW (NEW TRACES) 200-2200MS 24MS PREDICTION
	DESIGN WINDOW (NEW TRACES) 1900-2300MS 24MS PREDICTION
	DESIGN WINDOW (NEW TRACES) 3600-6000MS 24MS PREDICTION
	DESIGN WINDOW (NEW TRACES) 300-2200MS 24MS PREDICTION
	DESIGN WINDOW (NEW TRACES) 1900-2300MS 24MS PREDICTION
	DESIGN WINDOW (NEW TRACES) 3600-6000MS 24MS PREDICTION

STATIC CORRECTIONS	DEVIATION FROM MEAN DEPTH POINT STATIC
VELOCITY ANALYSIS	USING VELOCITY SCANS
TRACE SUPPRESSION	STARTED FROM COMMON DISTANCE GATHERS AND WHITE SCANS
	DISTANCE (METRES) / TIME (SEC)
SURFACE	0/0 100/0 300/100 1000/800 2500/1100
STATION	SURFACE CONSISTENT RESIDUAL STATICS
	4 ITERATIONS USING WINDOW: 800-2300MS
	TOP CONSISTENT RESIDUAL STATICS
	USING VARIABLE WINDOWS
STICK	1200M COP

PULSE SHAPING	HYPERSHIFT EXTRACTION USING COMPLEX DEPTH/POINT & SPECTRUM APPLICATION TO TRANSDUCER DATA TO ZERO PHASE
FILTER	APPLICATION OF 200MS ZERO PHASE SINCOSUS FILTER (SEE REF. BELOW)
	TIMING: 3400 500 500 3400
	1500 442 1202 4202 3002 1900TMS 18
	4000 442 802 3002 1902 1900TMS 18
	4000 442 802 3002 1902 1902
BALANCE	DYNAMIC TRACE EQUALIZATION USING ZOOMS WINDOWS
DISPLAY	RECORDING POLARITY (UPWARD DRIVING VELOCITY EQUALS NEGATIVE NUMBER)
	DISPLAY POLARITY (NEGATIVE NUMBER EQUALS WHITE THROUGH)
	HORIZONTAL SCALE: 12.5 TMS/CM
	VERTICAL SCALE: 5 CM/SEC

SCALE 1:112500

CLIENT REPRESENTATIVE HAS BEEN MR. A. ANNELLA, REPRESENTED BY INTER-ELSI
SE (S) DEVELOPMENT AND DATA PROCESSING DEPARTMENT
S. DOMATE PIZZINSE (TN)

DATA PROCESSED BY	066 (INTEI)	CHECKED	DATE
	Petty-Ray	APPROVED	DATE

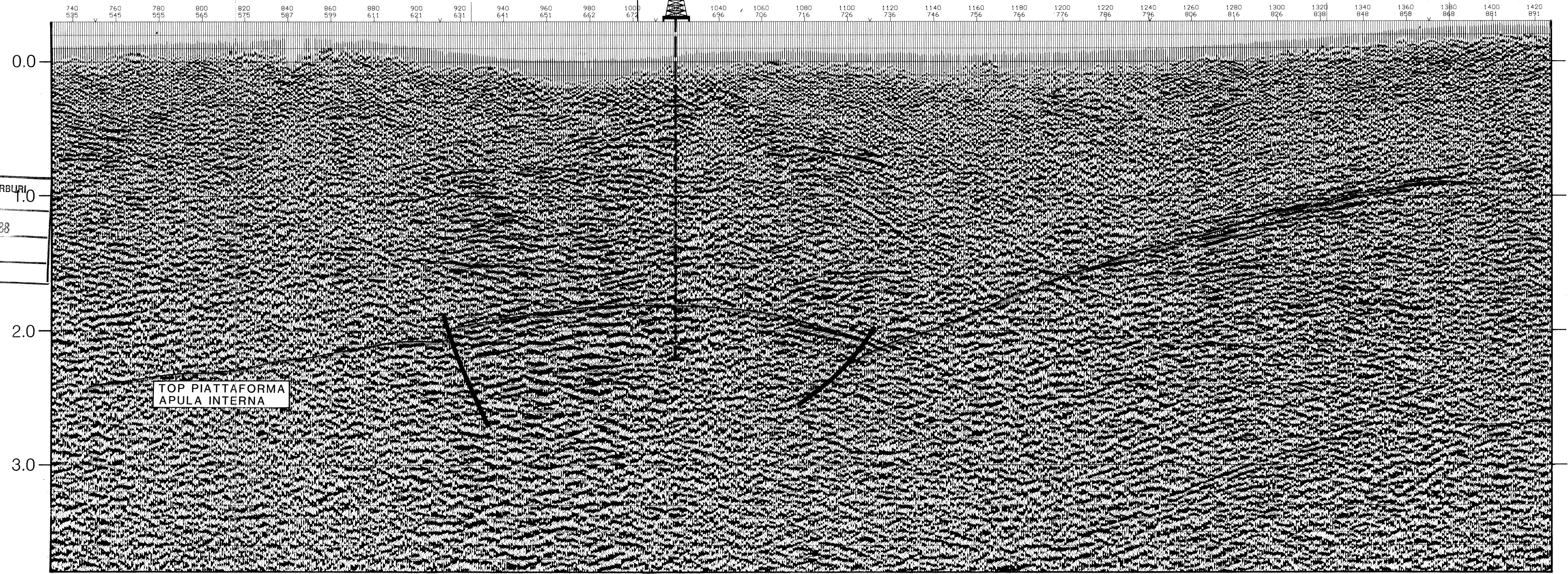
***** FILING PARAMETERS *****

FILE REEL NUMBER: 000
FILE NAME: 000
PROFILI: 000
HORIZONTAL SCALE: 12.5 TMS/CM
VERTICAL SCALE: 5 CM/SEC
FILMING DIRECTION: UP
DATE: 11/88

IMPULS REEL NUMBER: 000000

**TAURASI 1
(Proiettato)**

AV-367-88WL, STN. 104



740 535	760 545	780 555	800 565	820 575	840 587	860 599	880 611	900 621	920 631	940 641	960 651	980 662	1000 672	1040 696	1060 706	1080 716	1100 726	1120 736	1140 746	1160 756	1180 766	1200 776	1220 786	1240 796	1260 806	1280 816	1300 826	1320 838	1340 848	1360 858	1380 868	1400 881	1420 891
------------	------------	------------	------------	------------	------------	------------	------------	------------	------------	------------	------------	------------	-------------	-------------	-------------	-------------	-------------	-------------	-------------	-------------	-------------	-------------	-------------	-------------	-------------	-------------	-------------	-------------	-------------	-------------	-------------	-------------	-------------

SEZIONE IDROCARBURI
di NAPOLI
1.0
- 3 NOV. 1988
Prot. N. 6819
Sez. Posiz.