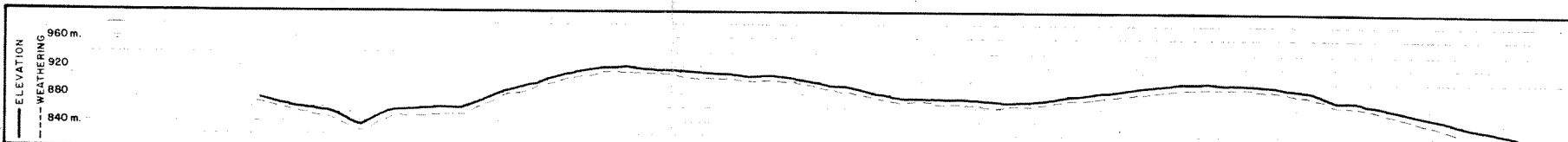


T.V.F. 600% *All. 7B*

0 1 Km.

S 16° E



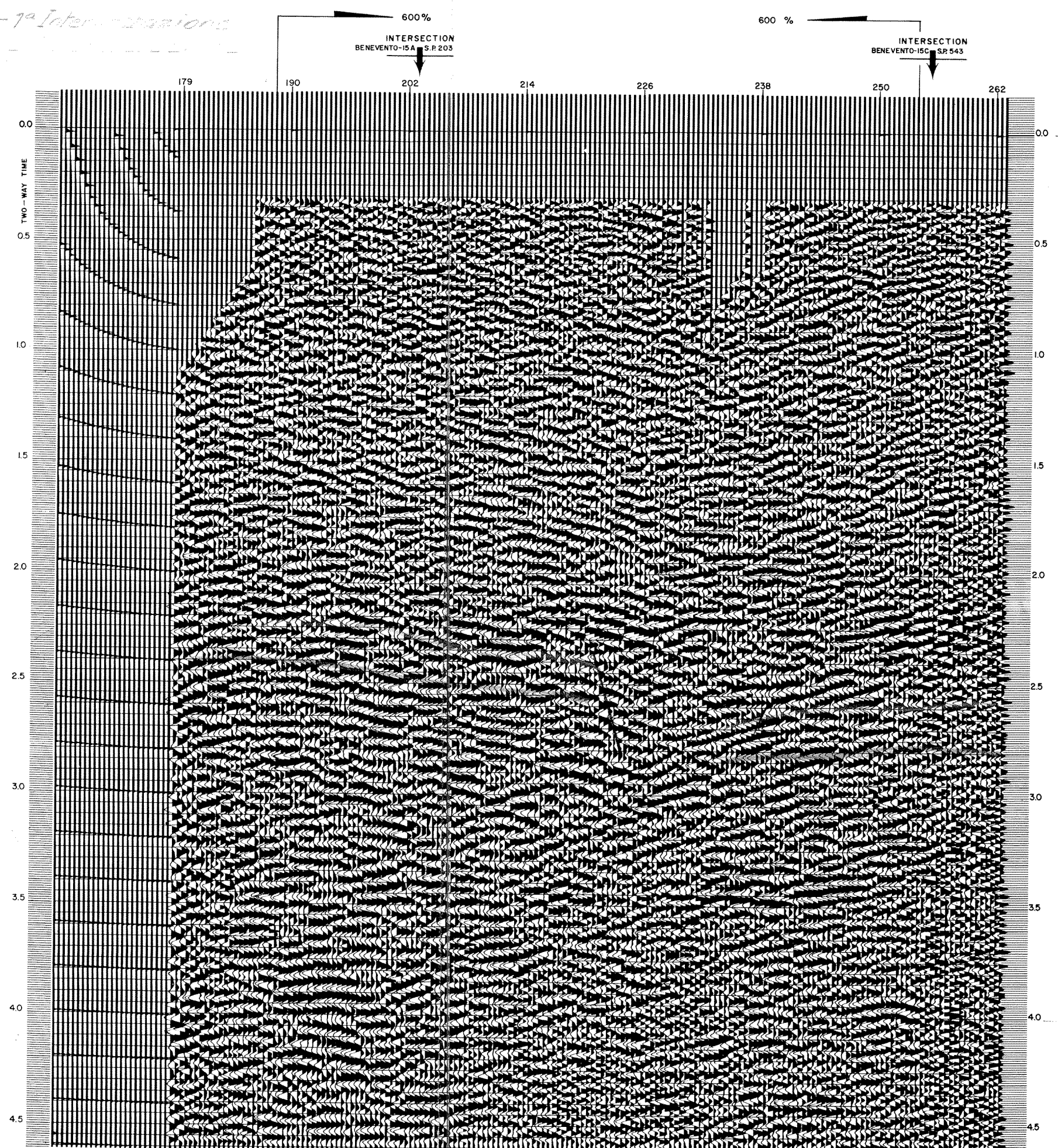
AGIP AREA: I.C.M. WESTERN RICERCHЕ
 PROSPECT: FOIANO VAL FORTORE GEOFISICHE s.p.a.
 GRUPPO LITTON INDUSTRIE

RECORDING DATA		PLAYBACK DATA	
SHOT BY	WESTERN	STK. REEL NUMBER	77994
PARTY	F-80	SAMPLE RATE	2 ms.
MAGNETIC RECORDER	SDS 1010	N. SAMPLE TRACE	2300
GAIN	2 BINARY	CAV	OFF
SAMPLE RATE	5100 ms.	MASTER GAIN	ATT: 2 B= 20
RECORD LENGTH	100 cps.	AMPLITUDE	600 m/sec.
FILTER	12 cps.	WEATHERING VEL.	3000 m/sec.
ALIASING FILTER	600% c/s	SUBWEATHERING VEL.	500 m.
SUBSURFACE COVERAGE	OCTOBER 1970	DATUM PLANE	Scale:
DATE		VERTICAL	1 sec. = 9.5 cm.
		HORIZONTAL	1 Km. = 8.46 cm.
		DATE	DECEMBER 2, 1970.

FIELD DATA		SKETCH	
SPREAD CONFIGURATION	1550 - 400 m.		
GROUPS/INTERVAL	50 m.		
GEOPHONES/GROUP	24 No.		
GEOPHONES FREQUENCY	c/s		

<input checked="" type="checkbox"/>	SHOT HOLES / S.P.	1
	AVERAGE CHARGE / SHOT	32 Kg.
	AVERAGE SHOT / DEPTH	21 m.
<input type="checkbox"/>	PRIMACORD	m/S.P.
<input type="checkbox"/>	WEIGHT DROPPING	DROPS/S.P.
<input type="checkbox"/>	DYNOSEIS	SHOT/S.P.

PROCESSING		DATA	
MUTE	VARIABLE	TRACES	TIME
VELOCITY ANALYSIS		S.P.	to S.P.
VELOCITY		179	262
VERSIONS			
TRANSCRIPTION A/D			
EDIT 66 RECOVERY			
EDIT 86 RECOVERY			
EDIT - SUM BG			
100% ALL POINTS			
100% SHORT TRACES ONLY (MINISECTION)			
100% SELECTED TRACES			
C.D.P.F. COMMON DEPTH POINT FAMILY			
C.D.F. COMMON DISTANCE FAMILY			
STATICS BEFORE NMO			
STATICS AFTER NMO			
NMO (STRAIGHT RAY)			
NMO (CURVED RAY)			
RESIDUAL STATICS			
RESIDUAL NMO			
VELOCITY ANALYSIS (A.V.A.)			
NMO EXPANDER			
PRELIMINARY STACK			
OPTIMUM STACK (AUTO STATICS ON C.D.P.F.)			
FINAL STACK			
T.V. DECON INVERSE FILTER BEFORE STACK		PREDICTION TIME	OP. LENGTH ms.
T.V. DECON INVERSE FILTER AFTER STACK			
T.V. DECON PREDICTIVE BEFORE STACK			
T.V. DECON PREDICTIVE AFTER STACK			
FILTER ANALYSIS		TIME GATE SEC	PASS BAND
T.V. FILTER (DIGITAL) 35 Pts.		0.300-2.200	14-38 12/12
		2.200-4.700	12-35 12/12
ANALOG FILTER			
NOTCH FILTER			
PREFILTER 35 Pts.		0.300-4.700	12-45 12/12
MERGE			
SMOOTHING			
DIGITAL COMPOSITION			
ANALOG COMPOSITION			
ENERGY LOG			
SPECIAL MUTE			
POWER SPECTRUM			
AUTOCORRELOGRAM			
REFORMAT			
DEPTH SECTION			



QUALITY CONTROL *Remella* DATE 4-12-20