



CGG - DATA PROCESSING SERVICES

A1383

FINA

COPYRIGHT

SAN LORENZO

MC-312-77

U 126 358 E

MIGRATION IN TIME
C 1200 0/0

PL 21 SURVEY 127 M5 33
JULY 1964 CCG-5 PROCESSING CODE

FIELD RECORDING

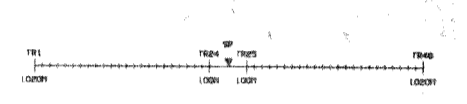
FIELD COVERAGE 6
 CONTRACTOR FINA
 SHOOTING DATE APRIL 1957

RECORDER 005 888-COM-1
 TAPE # 11804-11805-11806-11807
 LC FILTER 12 HZ-24 DB/OCT
 HC FILTER 125 HZ-75 DB/OCT
 SAMPLING RATE 2 MS
 RECORDING LENGTH 7000 MS

SOURCE DYNAMITE
 AVERAGE CHARGE / SHOT 4 KG
 AVERAGE SHOT DEPTH 27 M
 OFFSET 100 M
 DISTANCE BETWEEN SP 40 M

GEOPHONE SPREAD 294 TO 10
 FREQUENCY 24
 NO OF GEOPHONES / TRACE 48
 NO OF TRACES 18
 DISTANCE BETWEEN 2 TRACES 40 M

SPREAD CONFIGURATION



TRACE CONFIGURATION

GEOPHONES UNITS

SURFACE CORRECTIONS

METHOD-REFRACTION
 WEATHERING VELOCITY 600 M/S
 SUB-WEATHERING VELOCITY 2500 M/S
 DATUM: MEAN SEA LEVEL
 CORRECTION SIGN: POSITIVE CORRECTIONS SHORTEN TIMES

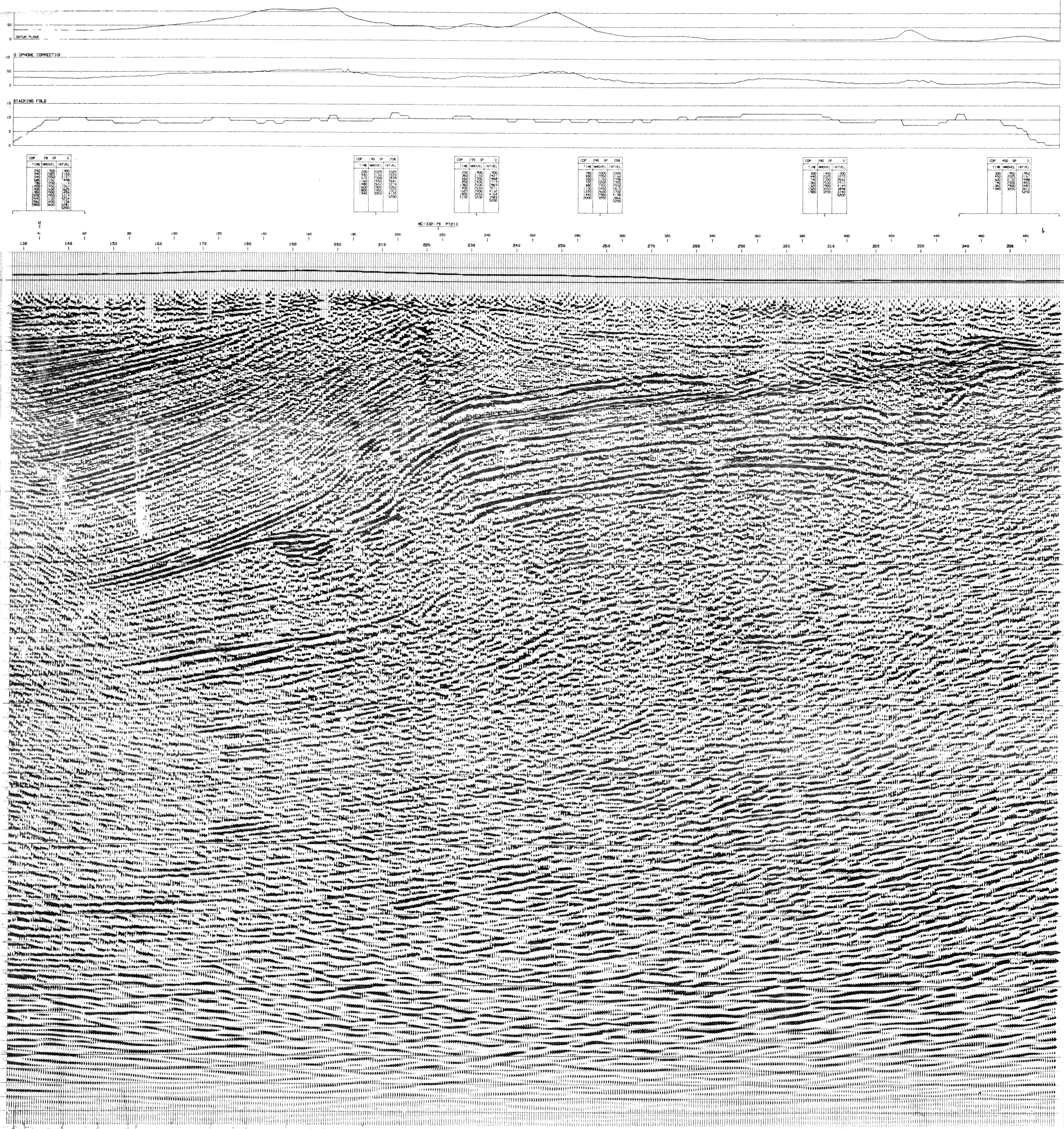
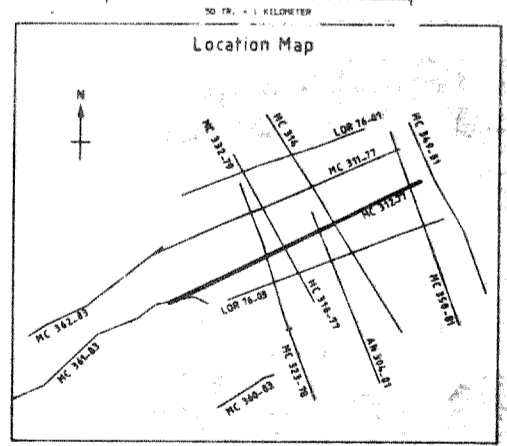
DIGITAL PROCESSING

PROCESSED LENGTH 7.5
 DEMULTIPLEXING
 AMPLITUDE RECOVERY
 RESAMPLING 2 MS TO 4 MS
 EDITING TIMES 1500 1500S, 1500 3000S, 11200 6000S
 GROUND LEVEL TO OPC (OP OF COMPUTATION)
 STATIC CORRECTIONS NUMBER PHASE: 1 OPERATORS
 DECONVOLUTION GATE 1 T 800-2000 MS L=060 MS F=1050
 GATE 2 T 300-2100 MS L=120 MS F=1050
 GATE 3 T 4000-5000 MS L=140 MS F=1100
 CONTINUOUS VELOCITY SCAN (VSCAN)
 VELOCITY ANALYSIS LINEAR INTERPOLATION BETWEEN
 AND CORRECTIONS 4 VELOCITY FUNCTIONS
 AUTOMATIC STATICS SURFACE CONSISTENT STATICS (SANTO)
 CALCULATION WINDOW 1000-2000 M/S
 STACK TIME VARIANT FILTER 18-45 HZ-T 0-1 500 MS
 10-70 HZ-T0800-11500 MS
 10-45 HZ-T10000-14000 MS
 10-40 HZ-T0000-15000 MS
 TRACE EQUALIZATION OPERATOR LENGTH 300 MS-T 0-T0800 MS
 MIGRATION IN TIME (WAVE EQUATION) 800 MS-T0800-16000 MS
 STATIC CORRECTIONS FROM OPC TO FLAT DATUM
 ANALOG DISPLAY

* ORIGIN OF TIMES AT OP OF COMPUTATION (OPC + AVERAGE GROUND LEVEL DISPLAYED ON TOP OF THE SECTION BY A BLACK PIP)
 ** STACK VELOCITIES IN MS TO 0/0

DISPLAY PARAMETERS

HORIZONTAL SCALE 1 CM = 8 CH
 VERTICAL SCALE 1 SEC = 10 CH
 DATUM PLANE 0 M



CDP	NO	SP	Q
130	1	1	1
140	1	1	1
150	1	1	1
160	1	1	1
170	1	1	1
180	1	1	1
190	1	1	1
200	1	1	1
210	1	1	1
220	1	1	1
230	1	1	1
240	1	1	1
250	1	1	1
260	1	1	1
270	1	1	1
280	1	1	1
290	1	1	1
300	1	1	1
310	1	1	1
320	1	1	1
330	1	1	1
340	1	1	1
350	1	1	1
360	1	1	1
370	1	1	1
380	1	1	1
390	1	1	1
400	1	1	1
410	1	1	1
420	1	1	1
430	1	1	1
440	1	1	1
450	1	1	1