



A 1349

Stratigraphic Section: N. 7 CINGOLI

General Location: F. 117 III SE

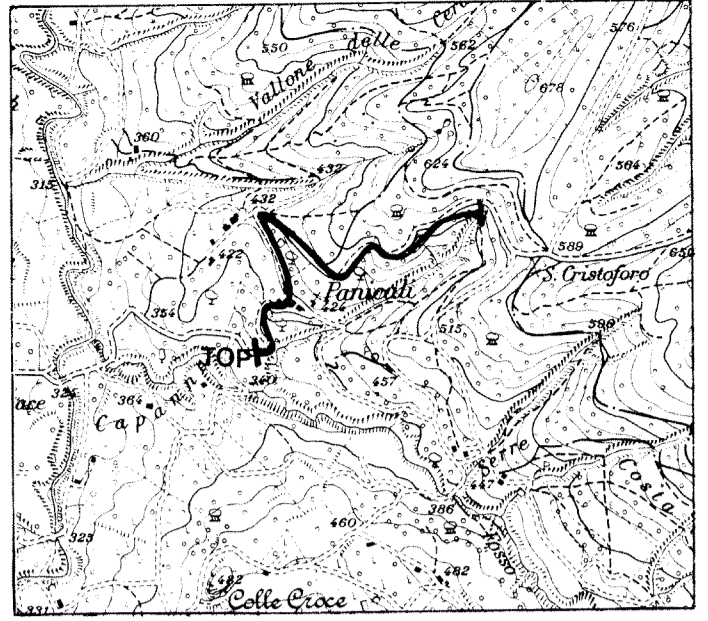
Measured by: P. FACIBENI

Date: AUGUST 1965

Method Measured: Jacob Staff and Brunton Compass

Scale: 1:1.000

Total Thickness: m. 390



Location Scale: 1:25000

Age	FM.	Sample N°	Meters	Lithology	Thickness	Lithologic Description	Shows	Biostratigraphy
UPPER EOCENE - LOWER MIOCENE	SCAGLIA CINEREA		0-20	[Lithology symbol]		Marlstone, greenish gray, fossiliferous, very laminated, bedding 30-50 cm. (80%); alternated with calcareous marlstone, light brown, bedding 5-15 cm. (20%).		
			20-40	[Lithology symbol]				
			40-60	[Lithology symbol]				
			60-80	[Lithology symbol]				
			80-100	[Lithology symbol]				
			100-120	[Lithology symbol]	217			
			120-140	[Lithology symbol]				
			140-160	[Lithology symbol]				
			160-180	[Lithology symbol]				
			180-200	[Lithology symbol]				
UPPER EOCENE - MIDDLE EOCENE	SCAGLIA ROSATA		200-220	[Lithology symbol]	13	Marlstone, yellow brown, fossiliferous, laminated, bedding 3-10 cm. (60%); interbedded with muddy micritic limestone, fossiliferous, white to buff, moderately hard, bedding 5-15 cm. (40%).		
			220-240	[Lithology symbol]	53	Muddy micritic limestone, brown to buff fossiliferous, laminated and fractured, moderately hard, bedding 5-50 cm. (60%), interbedded with micritic limestone, white to buff, fractured, bedding 15-60 cm. (40%).		
			240-260	[Lithology symbol]				
			260-280	[Lithology symbol]	14	As above, covered.		
			280-300	[Lithology symbol]				
UPPER CRETACEOUS	SCAGLIA		300-320	[Lithology symbol]		Muddy micritic limestone, white, with scattered fossils and black grains, fractured, very hard; bedding 40-60 cm.		
			320-340	[Lithology symbol]	103			
			340-360	[Lithology symbol]				
			360-380	[Lithology symbol]				
			380-400	[Lithology symbol]				
			400-420	[Lithology symbol]				
			420-440	[Lithology symbol]				
			440-460	[Lithology symbol]				