



A1398

Stratigraphic Section: N. 6 CERQUETO

General Location: F. 117 III NO

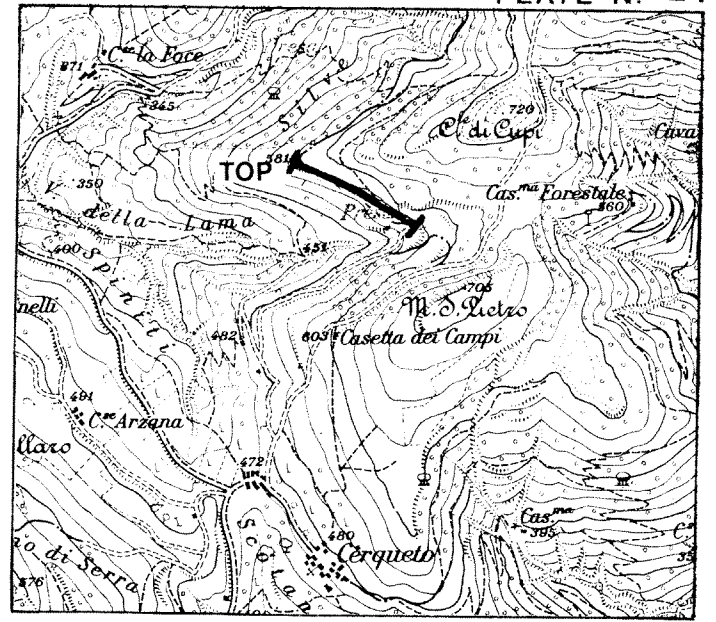
Measured by: R. CAPACCIOLI - A. MESSERI

Date: MAY 1977

Method Measured: Jacob Staff and Brunton Compass

Scale: 1:1.000

Total Thickness: m. 198



Location Scale: 1:25000

Age	FM.	Sample N°	Meters	Lithology	Thickness	Lithologic Description	Shows	Biostratigraphy
UPPER CRETACEOUS - MIDDLE EOCENE	ROSA TA		0-20	[Lithology symbols]	90	Micritic limestone, light brown, interbedded with marlstone and micritic mudstone light brown to tan, locally laminated; bedding 10-20 cm.		
			20-40	[Lithology symbols]				
UPPER CRETACEOUS - MIDDLE EOCENE	SCAGLIA		40-60	[Lithology symbols]	72	Micritic limestone very light gray to white, interbedded with marlstone; bedding 10-20 cm.		
			60-80	[Lithology symbols]				
UPPER CRETACEOUS - MIDDLE EOCENE	SCAGLIA		80-100	[Lithology symbols]	72	Micritic limestone very light gray to white, interbedded with marlstone; bedding 10-20 cm.		
			100-120	[Lithology symbols]				
UPPER CRETACEOUS - MIDDLE EOCENE	SCAGLIA		120-140	[Lithology symbols]	72	Micritic limestone very light gray to white, interbedded with marlstone; bedding 10-20 cm.		
			140-160	[Lithology symbols]				
UPPER CRETACEOUS - MIDDLE EOCENE	SCAGLIA		160-180	[Lithology symbols]	72	Micritic limestone very light gray to white, interbedded with marlstone; bedding 10-20 cm.		
			180-200	[Lithology symbols]				
LOWER CRETACEOUS	MARNE A EUCCOIDI		0-36	[Lithology symbols]	36	Micritic mudstone, light brown to olive gray, laminated, interbedded with micritic limestone, same color; bedding 5-10 cm.		