



A1346

Stratigraphic Section: N. 4 ALBACINA

General Location: F. 117 III SO

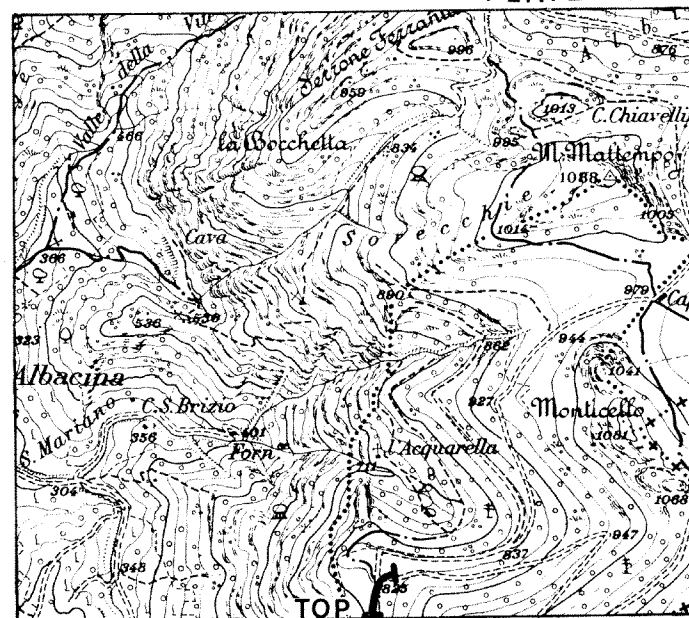
Measured by: R. CAPACCIOLI - A. MESSERI

Date: MAY 1977

Method Measured: Jacob Staff and Brunton Compass

Scale: 1:1.000

Total Thickness: m. 186



Location Scale: 1:25000

Age	FM.	Sample N°	Meters	Lithology	Thickness	Lithologic Description	Shows	Biostratigraphy
CRETACEOUS	MARNE A FUCOIDI		0		9	Micritic mudstone medium gray to light brown, laminated, with one bituminous level towards the top, interbedded with micritic limestone medium to light gray; bedding 5-10 cm.		
			20		69	Micritic limestone, very light gray to white, with rare chert; bedding 10-20 cm.		
			40					
LOWER MAIOLICA			60		102	Micritic limestone as above, but very fractured.		
			80					
			100					
			120					
UPPER JURASSIC	SCISTI AD ARTICI		140		6	Micritic limestone, slightly argillaceous, light gray to buff, with chert nodules, intercalated with shale, slightly calcareous and silty, light-gray to olive gray, laminated; bedding 5-15 cm.		
			160					
			180					