



1365

Stratigraphic Section: N. 3 POGGIO S. VICINO

General Location: F. 117 III SO-SE

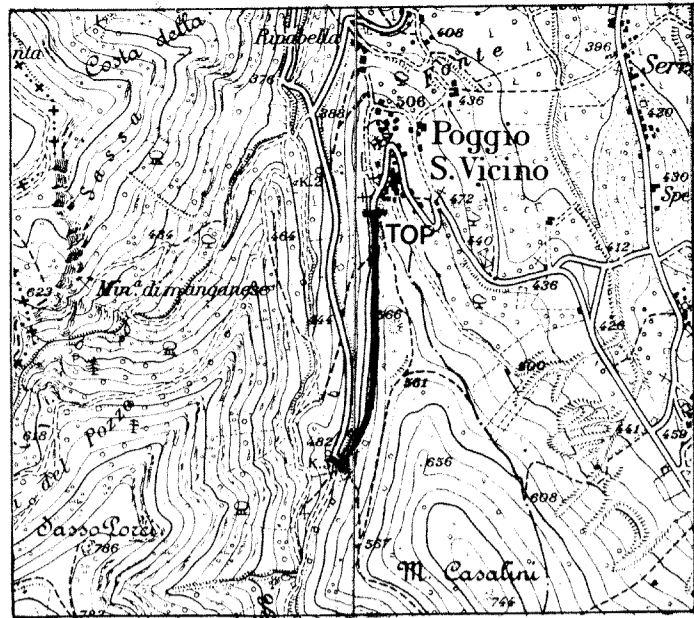
Measured by: R. CAPACCIOLI - A. MESSERI

Date: MAY 1977

Method Measured: Jacob Staff and Brunton Compass

Scale: 1:1.000

Total Thickness: m.354



Location Scale: 1:25000

Age	FM	Sample N°	Meters	Lithology	Thick-ness	Lithologic Description	Shows	Biostratigraphy
UPPER CRETACEOUS - MIDDLE EOCENE	ROSA TA		0-20	[Lithology symbol]	126	Micritic limestone, light gray to light brown, interbedded with marlstone; bedding 10-30 cm.		
			20-40	[Lithology symbol]				
			40-60	[Lithology symbol]				
			60-80	[Lithology symbol]				
SCAGLIA			80-100	[Lithology symbol]	75	Limestone and marlstone as above; bedding 10-20 cm.		
		100-120	[Lithology symbol]					
		120-140	[X symbol]	45			Covered.	
		140-160	[X symbol]					
LOWER CRETACEOUS	MARNE A FUCOIDI		160-180	[Lithology symbol]	69	Micritic limestone, very light gray to white, interbedded with marlstone; bedding 10-20 cm.		
			180-200	[Lithology symbol]				
			200-220	[Lithology symbol]				
			220-240	[Lithology symbol]				
			240-260	[Lithology symbol]	39	Micritic mudstone, light brown to olive gray, laminated, interbedded with micritic limestone same color; bedding 5-25 cm.		
	260-280	[Lithology symbol]						
	280-300	[Lithology symbol]						
	300-320	[Lithology symbol]						
			320-340	[Lithology symbol]				
			340-360	[Lithology symbol]				