



A1306

Stratigraphic Section: N. 2 FRONTALE

General Location: F. 117 III SE

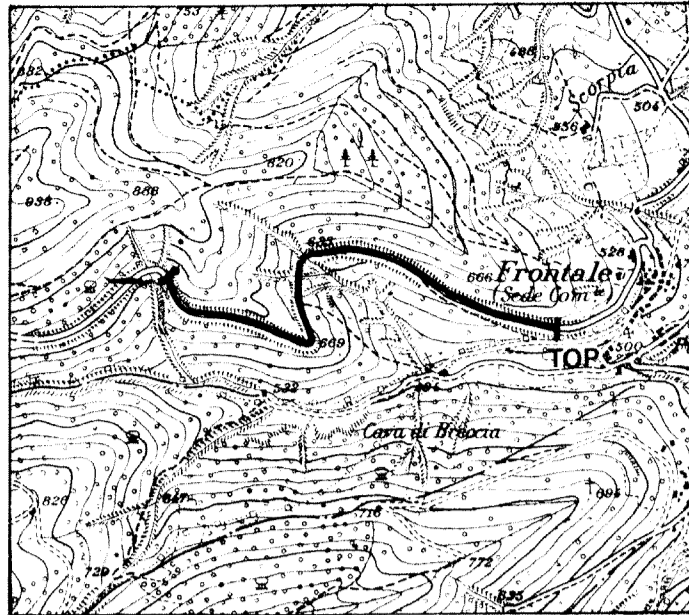
Measured by: R. CAPACCIOLI - A. MESSERI

Date: MAY 1977

Method Measured: Jacob Staff and Brunton Compass

Scale: 1:1.000

Total Thickness: m. 419



Location Scale: 1:25000

Age	FM.	Sample N°	Meters	Lithology	Thickness	Lithologic Description	Shows	Biostratigraphy
UPPER EOCENE	SCAGLIA CINEREA			+	5	Marlstone, greenish-gray, moderately hard, laminated and with acicular fracturing; bedding 5-30 cm.		
				+	9	Micritic limestone red brown to buff, intercalated with marlstone same color; bedding 5-25 cm.		
			20	+	14	Micritic mudstone, yellow-brown, interbedded with micritic limestone, light brown; bedding 5-10 cm.		
			40	+		Micritic limestone, light gray to light brown, with rare chert towards the bottom, intercalated with micritic mudstone; bedding 10-30 cm.		
			60	+				
			80	+				
			100	+	159			
			120	+				
			140	+				
			160	+				
			180	+				
			200	+		Micritic limestone as above, with levels of chert 3-5 cm. thick; bedding 10-30 cm.		
			220	+	60			
			240	+				
			260	X	33	Covered.		
			280	+	18	Micritic mudstone light brown to olive gray, laminated, interbedded with micritic limestone same color; bedding 5-25 cm.		
			300	+		Micritic limestone light gray, with levels of black chert 3-8 cm. thick; bedding 60 cm.		
			320	+				
			340	+	120			
			360	+				
			380	+				
			400	+				
			420	+				

UPPER CRETACEOUS - MIDDLE EOCENE

LOWER CRETACEOUS

SCAGLIA ROSATA

MARNE A FULCIDI

MAIOLICA