

FI-324-84
S.P. 94 TO S.P. 316

SEZIONE IDROCARBURI
di ROMA

21 APR. 1986

Prof. N. 13827

1500PCT DBS-TVF

III-254/5

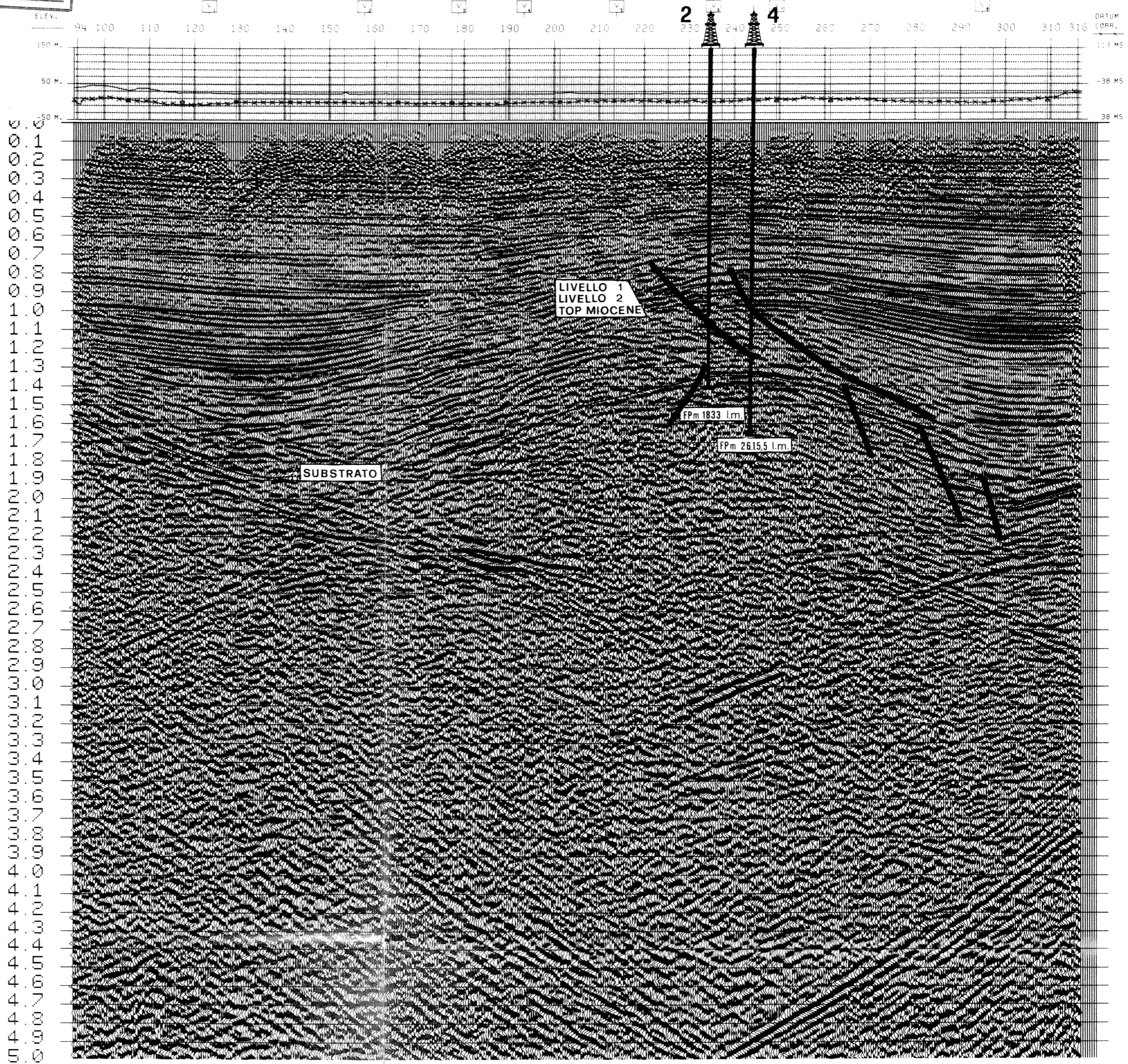
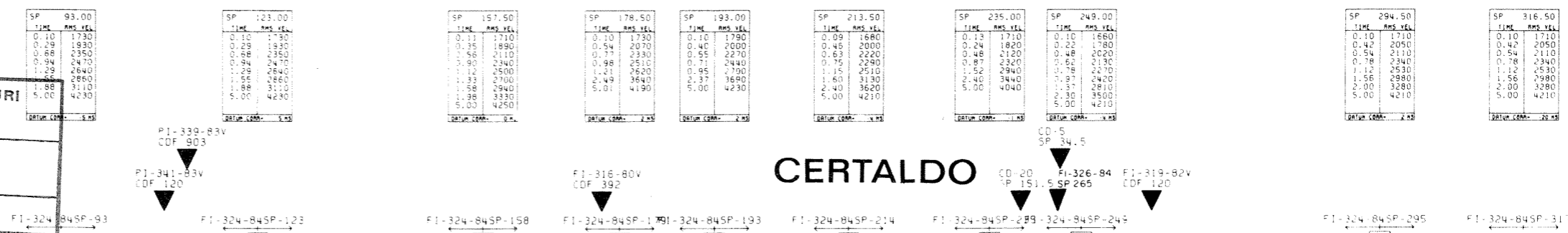
ALL.	DATA	DIS. N°
6	NOVEMBRE 1985	700/6

AGIP
WESTERN RICERCHE GEOFISICHE
MILAN - ITALY

AREA ITALIA-ZONA 2
PROSPECT EMPOLI

DATE SHOT: FEBRUARY 1985
DATE PROCESSED: APRIL 1985

RECORDING DATA	PROCESSING SEQUENCE
PART NUMBER: STAG SPR 01	1. EDIT GEO. AMPL.
RECORDING FILTER: 0F5 11	2. TIME VARIANT PREFILTER
RECORDING FILTER: 12-128 HZ	3. GEOMETRICAL SPREADING GAIN
NOTCH FILTER: 50 HZ	4. MINIMUM PHASE SHARPENING
RECORD LENGTH: 2 SEC	5. PREPROCESSOR-DECON
SAMPLE RATE: 2 MS	6. SURF. CONSISTENT RESID. STATICS
SUBSURFACE COVERAGE: 1500 PCT	7. VELOCITY ANALYSIS
GROUP INTERVAL: METERS	8. NMO, STATICS, MUTE APPLICATION
NUMBER OF GROUPS: 60	9. SURF. CONSISTENT RESID. STATICS
WEATHERING VELOCITY: M/S	10. CDP. CONSISTENT RESID. STATICS
STATIC CALCULATION VELOCITY: 2000 M/S	11. STACK ISOVRT
DATUM PLANE: ABOVE SEA LEVEL	12. ZERO PHASE SHARPENING
UPWARD GROUND MOTION: NEGATIVE NUMB. ON TAPE	13. TIME VARIANT FILTER - AMS GAIN
SEISMOGRAM ARRAY	
GEOPHONE TYPE: SENSOR SM 40	
GEOPHONE FREQUENCY: 10 HZ	
GEOPHONE GROUP	
SPREAD DIMENSIONS	
LEGEND	
LINE LOCATION MAP	



0
1
2
3
4
5
6
7
8
9
10
11
12
13
14
15
16
17
18
19
20
21
22
23
24
25
26
27
28
29
30
31
32
33
34
35
36
37
38
39
40
41
42
43
44
45
46
47
48
49
50