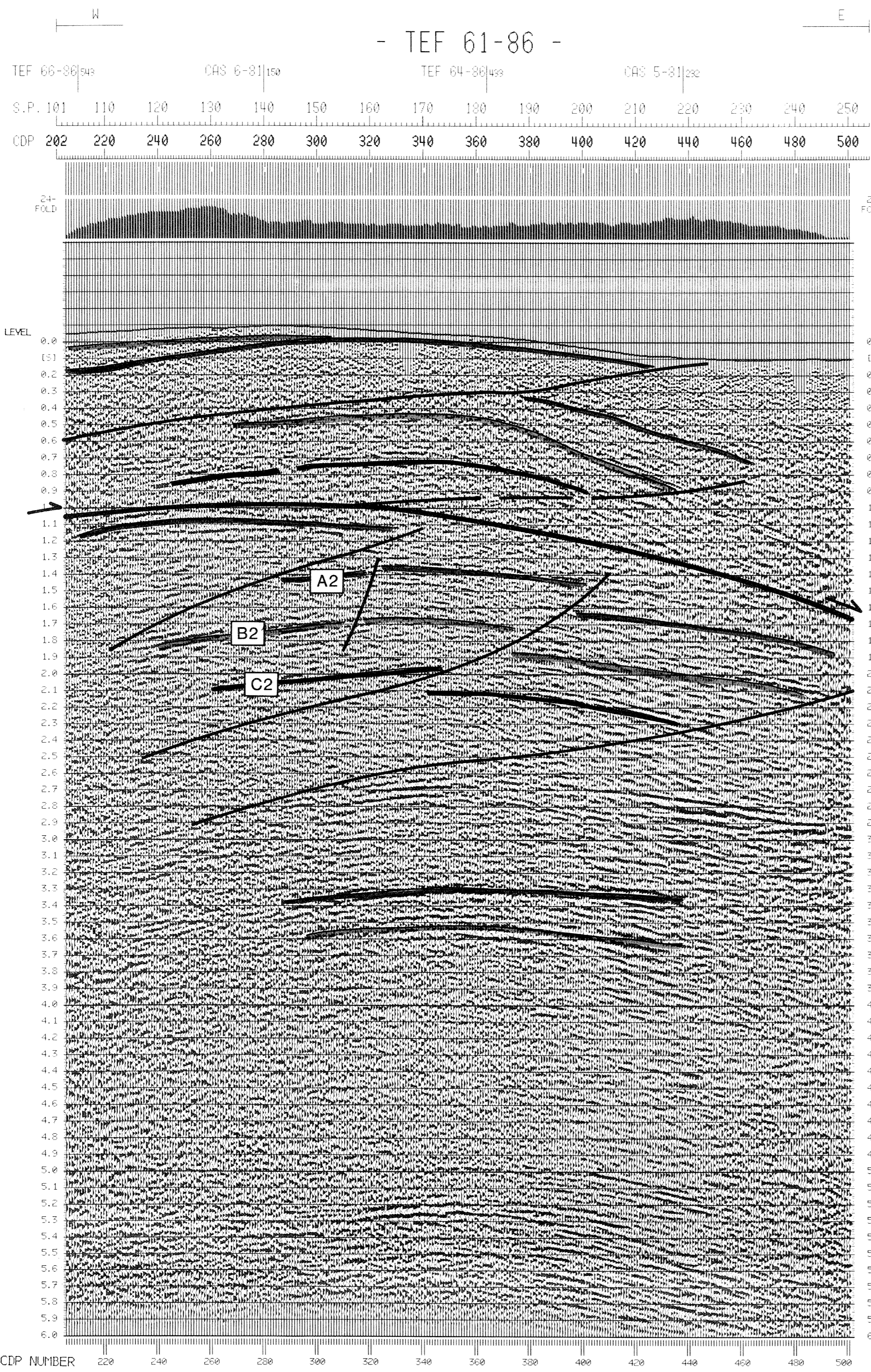
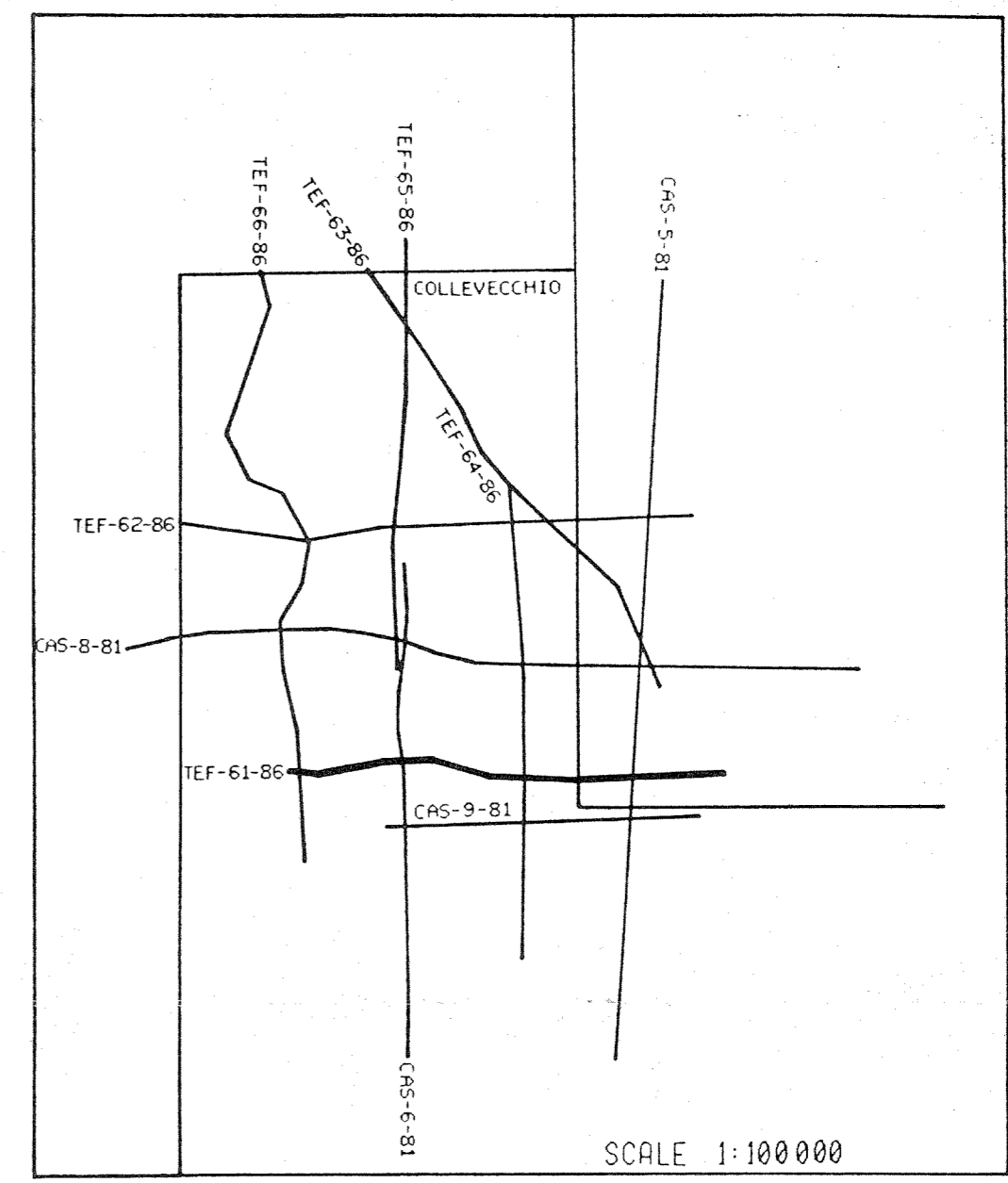


| SP    | VS    | V1    | SP    | VS    | V1    | SP    | VS    | V1    | SP    | VS    | V1    |
|-------|-------|-------|-------|-------|-------|-------|-------|-------|-------|-------|-------|
| 0.100 | 3.700 | 3.700 | 0.100 | 3.330 | 3.330 | 0.100 | 3.330 | 3.330 | 0.100 | 3.330 | 3.330 |
| 0.200 | 3.750 | 3.750 | 0.200 | 3.350 | 3.370 | 0.200 | 3.350 | 3.370 | 0.200 | 3.350 | 3.370 |
| 0.300 | 3.770 | 3.800 | 0.300 | 3.370 | 3.400 | 0.300 | 3.370 | 3.400 | 0.300 | 3.370 | 3.400 |
| 0.400 | 3.800 | 3.850 | 0.400 | 3.400 | 3.450 | 0.400 | 3.400 | 3.450 | 0.400 | 3.400 | 3.450 |
| 0.500 | 3.820 | 3.880 | 0.500 | 3.420 | 3.480 | 0.500 | 3.420 | 3.480 | 0.500 | 3.420 | 3.480 |
| 0.600 | 3.850 | 3.920 | 0.600 | 3.450 | 3.520 | 0.600 | 3.450 | 3.520 | 0.600 | 3.450 | 3.520 |
| 0.700 | 3.870 | 3.950 | 0.700 | 3.480 | 3.550 | 0.700 | 3.480 | 3.550 | 0.700 | 3.480 | 3.550 |
| 0.800 | 3.900 | 3.980 | 0.800 | 3.500 | 3.580 | 0.800 | 3.500 | 3.580 | 0.800 | 3.500 | 3.580 |
| 0.900 | 3.920 | 4.000 | 0.900 | 3.520 | 3.600 | 0.900 | 3.520 | 3.600 | 0.900 | 3.520 | 3.600 |
| 1.000 | 3.950 | 4.030 | 1.000 | 3.550 | 3.630 | 1.000 | 3.550 | 3.630 | 1.000 | 3.550 | 3.630 |
| 1.100 | 3.970 | 4.050 | 1.100 | 3.570 | 3.650 | 1.100 | 3.570 | 3.650 | 1.100 | 3.570 | 3.650 |
| 1.200 | 3.980 | 4.060 | 1.200 | 3.580 | 3.660 | 1.200 | 3.580 | 3.660 | 1.200 | 3.580 | 3.660 |
| 1.300 | 3.990 | 4.070 | 1.300 | 3.590 | 3.670 | 1.300 | 3.590 | 3.670 | 1.300 | 3.590 | 3.670 |
| 1.400 | 4.000 | 4.080 | 1.400 | 3.600 | 3.680 | 1.400 | 3.600 | 3.680 | 1.400 | 3.600 | 3.680 |
| 1.500 | 4.010 | 4.090 | 1.500 | 3.610 | 3.690 | 1.500 | 3.610 | 3.690 | 1.500 | 3.610 | 3.690 |
| 1.600 | 4.020 | 4.100 | 1.600 | 3.620 | 3.700 | 1.600 | 3.620 | 3.700 | 1.600 | 3.620 | 3.700 |
| 1.700 | 4.030 | 4.110 | 1.700 | 3.630 | 3.710 | 1.700 | 3.630 | 3.710 | 1.700 | 3.630 | 3.710 |
| 1.800 | 4.040 | 4.120 | 1.800 | 3.640 | 3.720 | 1.800 | 3.640 | 3.720 | 1.800 | 3.640 | 3.720 |
| 1.900 | 4.050 | 4.130 | 1.900 | 3.650 | 3.730 | 1.900 | 3.650 | 3.730 | 1.900 | 3.650 | 3.730 |
| 2.000 | 4.060 | 4.140 | 2.000 | 3.660 | 3.740 | 2.000 | 3.660 | 3.740 | 2.000 | 3.660 | 3.740 |
| 2.100 | 4.070 | 4.150 | 2.100 | 3.670 | 3.750 | 2.100 | 3.670 | 3.750 | 2.100 | 3.670 | 3.750 |
| 2.200 | 4.080 | 4.160 | 2.200 | 3.680 | 3.760 | 2.200 | 3.680 | 3.760 | 2.200 | 3.680 | 3.760 |
| 2.300 | 4.090 | 4.170 | 2.300 | 3.690 | 3.770 | 2.300 | 3.690 | 3.770 | 2.300 | 3.690 | 3.770 |
| 2.400 | 4.100 | 4.180 | 2.400 | 3.700 | 3.780 | 2.400 | 3.700 | 3.780 | 2.400 | 3.700 | 3.780 |
| 2.500 | 4.110 | 4.190 | 2.500 | 3.710 | 3.790 | 2.500 | 3.710 | 3.790 | 2.500 | 3.710 | 3.790 |
| 2.600 | 4.120 | 4.200 | 2.600 | 3.720 | 3.800 | 2.600 | 3.720 | 3.800 | 2.600 | 3.720 | 3.800 |
| 2.700 | 4.130 | 4.210 | 2.700 | 3.730 | 3.810 | 2.700 | 3.730 | 3.810 | 2.700 | 3.730 | 3.810 |
| 2.800 | 4.140 | 4.220 | 2.800 | 3.740 | 3.820 | 2.800 | 3.740 | 3.820 | 2.800 | 3.740 | 3.820 |
| 2.900 | 4.150 | 4.230 | 2.900 | 3.750 | 3.830 | 2.900 | 3.750 | 3.830 | 2.900 | 3.750 | 3.830 |
| 3.000 | 4.160 | 4.240 | 3.000 | 3.760 | 3.840 | 3.000 | 3.760 | 3.840 | 3.000 | 3.760 | 3.840 |
| 3.100 | 4.170 | 4.250 | 3.100 | 3.770 | 3.850 | 3.100 | 3.770 | 3.850 | 3.100 | 3.770 | 3.850 |
| 3.200 | 4.180 | 4.260 | 3.200 | 3.780 | 3.860 | 3.200 | 3.780 | 3.860 | 3.200 | 3.780 | 3.860 |
| 3.300 | 4.190 | 4.270 | 3.300 | 3.790 | 3.870 | 3.300 | 3.790 | 3.870 | 3.300 | 3.790 | 3.870 |
| 3.400 | 4.200 | 4.280 | 3.400 | 3.800 | 3.880 | 3.400 | 3.800 | 3.880 | 3.400 | 3.800 | 3.880 |
| 3.500 | 4.210 | 4.290 | 3.500 | 3.810 | 3.890 | 3.500 | 3.810 | 3.890 | 3.500 | 3.810 | 3.890 |
| 3.600 | 4.220 | 4.300 | 3.600 | 3.820 | 3.900 | 3.600 | 3.820 | 3.900 | 3.600 | 3.820 | 3.900 |
| 3.700 | 4.230 | 4.310 | 3.700 | 3.830 | 3.910 | 3.700 | 3.830 | 3.910 | 3.700 | 3.830 | 3.910 |
| 3.800 | 4.240 | 4.320 | 3.800 | 3.840 | 3.920 | 3.800 | 3.840 | 3.920 | 3.800 | 3.840 | 3.920 |
| 3.900 | 4.250 | 4.330 | 3.900 | 3.850 | 3.930 | 3.900 | 3.850 | 3.930 | 3.900 | 3.850 | 3.930 |
| 4.000 | 4.260 | 4.340 | 4.000 | 3.860 | 3.940 | 4.000 | 3.860 | 3.940 | 4.000 | 3.860 | 3.940 |
| 4.100 | 4.270 | 4.350 | 4.100 | 3.870 | 3.950 | 4.100 | 3.870 | 3.950 | 4.100 | 3.870 | 3.950 |
| 4.200 | 4.280 | 4.360 | 4.200 | 3.880 | 3.960 | 4.200 | 3.880 | 3.960 | 4.200 | 3.880 | 3.960 |
| 4.300 | 4.290 | 4.370 | 4.300 | 3.890 | 3.970 | 4.300 | 3.890 | 3.970 | 4.300 | 3.890 | 3.970 |
| 4.400 | 4.300 | 4.380 | 4.400 | 3.900 | 3.980 | 4.400 | 3.900 | 3.980 | 4.400 | 3.900 | 3.980 |
| 4.500 | 4.310 | 4.390 | 4.500 | 3.910 | 3.990 | 4.500 | 3.910 | 3.990 | 4.500 | 3.910 | 3.990 |
| 4.600 | 4.320 | 4.400 | 4.600 | 3.920 | 4.000 | 4.600 | 3.920 | 4.000 | 4.600 | 3.920 | 4.000 |
| 4.700 | 4.330 | 4.410 | 4.700 | 3.930 | 4.010 | 4.700 | 3.930 | 4.010 | 4.700 | 3.930 | 4.010 |
| 4.800 | 4.340 | 4.420 | 4.800 | 3.940 | 4.020 | 4.800 | 3.940 | 4.020 | 4.800 | 3.940 | 4.020 |
| 4.900 | 4.350 | 4.430 | 4.900 | 3.950 | 4.030 | 4.900 | 3.950 | 4.030 | 4.900 | 3.950 | 4.030 |
| 5.000 | 4.360 | 4.440 | 5.000 | 3.960 | 4.040 | 5.000 | 3.960 | 4.040 | 5.000 | 3.960 | 4.040 |
| 5.100 | 4.370 | 4.450 | 5.100 | 3.970 | 4.050 | 5.100 | 3.970 | 4.050 | 5.100 | 3.970 | 4.050 |
| 5.200 | 4.380 | 4.460 | 5.200 | 3.980 | 4.060 | 5.200 | 3.980 | 4.060 | 5.200 | 3.980 | 4.060 |
| 5.300 | 4.390 | 4.470 | 5.300 | 3.990 | 4.070 | 5.300 | 3.990 | 4.070 | 5.300 | 3.990 | 4.070 |
| 5.400 | 4.400 | 4.480 | 5.400 | 4.000 | 4.080 | 5.400 | 4.000 | 4.080 | 5.400 | 4.000 | 4.080 |
| 5.500 | 4.410 | 4.490 | 5.500 | 4.010 | 4.090 | 5.500 | 4.010 | 4.090 | 5.500 | 4.010 | 4.090 |
| 5.600 | 4.420 | 4.500 | 5.600 | 4.020 | 4.100 | 5.600 | 4.020 | 4.100 | 5.600 | 4.020 | 4.100 |
| 5.700 | 4.430 | 4.510 | 5.700 | 4.030 | 4.110 | 5.700 | 4.030 | 4.110 | 5.700 | 4.030 | 4.110 |
| 5.800 | 4.440 | 4.520 | 5.800 | 4.040 | 4.120 | 5.800 | 4.040 | 4.120 | 5.800 | 4.040 | 4.120 |
| 5.900 | 4.450 | 4.530 | 5.900 | 4.050 | 4.130 | 5.900 | 4.050 | 4.130 | 5.900 | 4.050 | 4.130 |
| 6.000 | 4.460 | 4.540 | 6.000 | 4.060 | 4.140 | 6.000 | 4.060 | 4.140 | 6.000 | 4.060 | 4.140 |

|                              |          |              |                      |       |         |                      |          |
|------------------------------|----------|--------------|----------------------|-------|---------|----------------------|----------|
| FINA                         | Permesso | COLLEVECCHIO | Fina Italiana S.p.A. |       |         |                      |          |
|                              | Zona     | ABRUZZO      | RICERCHE IDROCARBURI |       |         |                      |          |
| Linea TEF 61-86 Interpretata |          |              |                      |       |         |                      |          |
| Autore                       | G. BOLIS | Disegnatore  | W. GABELLI           | Data  | 12/1987 | Allegato al Rapporto | ALLEGATO |
| Sezione                      | AREA 2   | Disegno N°   | GF 165.22            | Scala |         | RELAZIONE FINALE     | I        |



|   |   |
|---|---|
| <h3>RECORDING</h3> <p>FIELD PARTY: S.I.A.G. PARTY 04<br/>         CONTRACTOR: S.I.A.G. SPA<br/>         RECORDING PERIOD: NOVEMBER-DECEMBER 1986<br/>         RECORDING SYSTEM: DPS V TI' 64 CHANNELS<br/>         TAPE FORMAT: SEG-B, 9 TRACK, 300 BPI<br/>         POLARITY OF SYSTEM: SEG-CODE 0001<br/>         COMPRESSIONAL EVENTS @ NEGATIVE NUMBERS<br/>         SUBSURFACE COVERAGE: 10 FOLD<br/>         RECORD LENGTH: 6 SEC. SAMPLING RATE: 2 MSEC<br/>         FILTER: LOW-CUT 12 HZ 18 DB/OCT<br/>         HIGH-CUT 128 HZ 72 DB/OCT<br/>         NOTCH FILTER OUT<br/>         GAIN CONTROL: CONSTANT GAIN<br/>         RECEIVER TYPE: SM4 U (10 HZ)<br/>         NO. OF GROUPS 60, SPACING 40 M<br/>         GROUP LENGTH 70 M, 24 RECEIVERS PER GROUP<br/>         RECEIVER ARRAY:<br/>         ***** X *****<br/>         [----- 70 M -----]<br/>         Emitter Array:<br/>         SINGLE - HOLE SHOT<br/>         Energy Source: DYNAMITE<br/>         AVERAGE SPACING: VARIABLE<br/>         CHARGE: 10 KG<br/>         CHARGE DEPTH: 25 M<br/>         Emitter Receiver Configuration:<br/>         U -----&gt; E<br/>         1 30 31 60<br/>         [-----] X [-----]<br/>         [--- 1100 M ---] [--- 600 M ---] [--- 1160 M ---]</p> | <h3>PROCESSING</h3> <p>INPUT CREW: K. GOETZE<br/>         SUPERVISOR: P. ROSILIUS<br/>         PRAKLA-SEISMOS PROCESSING NO. 87 5 202 50</p> <ol style="list-style-type: none"> <li>INPUT: TAPE FORMAT: SEG-B, 9 TRACK, 6250 BPI<br/>             SAMPLING RATE 2 MS. 64 TRACES</li> <li>GAIN REMOVAL</li> <li>ANTI-LIAS FILTER: HIGH-CUT 90 HZ 24 DB/OCT</li> <li>RESAMPLING: SAMPLING RATE 4 MS</li> <li>CORRECTION OF SPHERICAL DIVERGENCE</li> <li>DECONVOLUTION: TYPE PREDICTIVE, TIMEVARIANT, PREWHITENING<br/>             FACTOR 1X, 3 GATES, OPERATOR LENGTH: 160 MS<br/>             SHOTNEAR SHOTFAR 100% TIME PRED. INTERVAL<br/>             MS MS MS MS<br/>             200-1600 700-1600 1000 8<br/>             1400-5200 1400-5200 2500 24<br/>             3000-6000 3000-6000 4500 24</li> <li>STATIC CORRECTIONS (CALCULATED BY THE FIELD PARTY)<br/>             CORRECTION VELOCITY: 3700 M/S. DATUM PLANE: 700 M<br/>             RECALCULATED FOR INTERMEDIATE TIME LEVEL CORRECTIONS (ITL)</li> <li>DYNAMIC CORRECTIONS, DERIVED FROM VELOCITY ANALYSES (STACK TEST)</li> <li>AUTOMATIC RESIDUAL STATIC CORRECTIONS (SURFACE CONSISTENT, 2 ITERATIONS) GATE: 300 - 3400 MS</li> <li>NORMALIZATION (SEE TABLE)</li> <li>HORIZONTAL STACKING: 10 FOLD<br/>             STACKING VELOCITIES (SEE TOPLABEL)</li> <li>BLOCK CORRECTION: 600 MS</li> <li>RECALCULATION OF INTERMEDIATE TIME LEVEL TO DATUM PLANE 700 M WITH VARIABLE REPLACEMENT VELOCITIES: 3700 M/S TO 4200 M/S</li> <li>TIMEVARIANT FREQUENCY FILTER<br/>             100 X TIME LOW-CUT HIGH-CUT<br/>             MS HZ DB/OCT HZ DB/OCT<br/>             1500 12 24 60 48<br/>             2400 12 24 50 48<br/>             3200 10 24 50 48<br/>             4200 10 24 40 48</li> <li>NORMALIZATION (SEE TABLE)</li> <li>DISPLAY<br/>             SCALE: 1:25000, 1 SEC @ 5 CM<br/>             TRACE SPACING: 0.8 M<br/>             POLARITY: SEG (COMPRESSIONAL EVENTS @ WHITE)</li> </ol> <p>* 000005/08/87<br/>         ALL TIMES REFER TO INTERMEDIATE TIME LEVEL<br/>         DATE: AUGUST, 1987</p> |
| FINA ITALIANA S.P.A. ITALY<br>  | INPUT CREW: _____<br>DATE: _____<br>S. 1:25000 ENCL.  |
| COLLEVECCHIO<br>LINE TEF 61-86 (SP 101-250)<br>STACK, TVF-FILTER<br>10 FOLD   |   |
| 875 202<br>   |   |