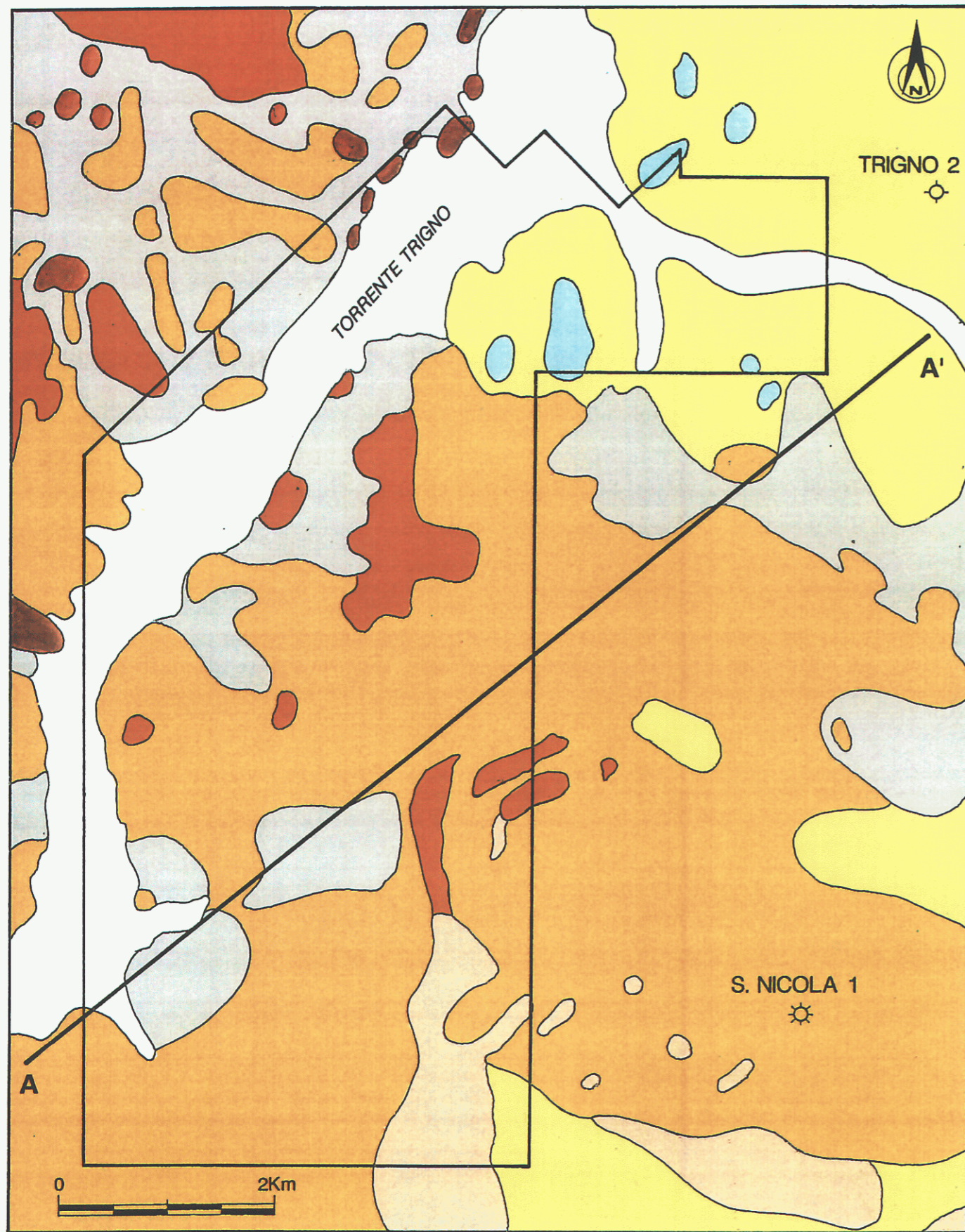
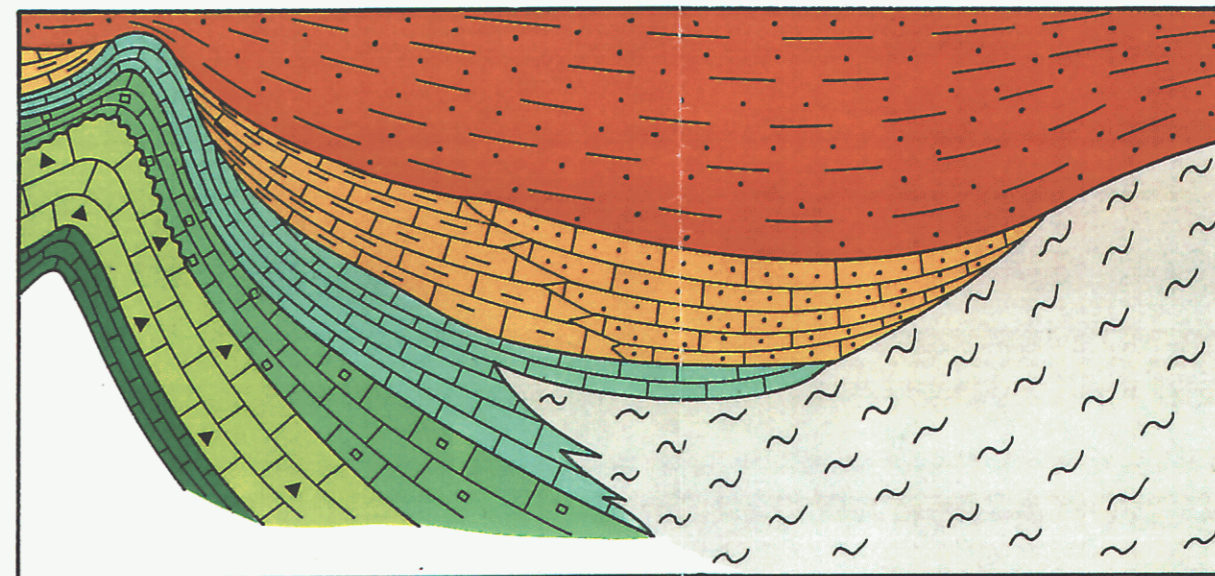




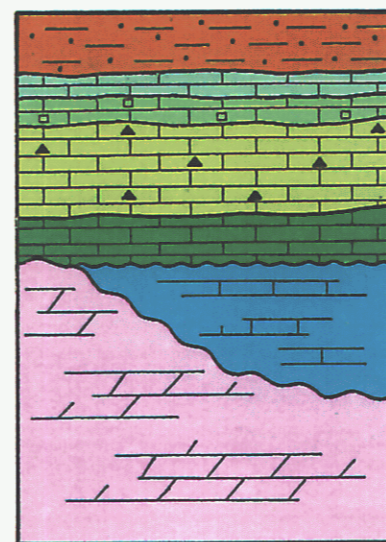
CARTA GEOLOGICA



FACIES MOLISANA



FACIES MOLISANA



UNITA'

TARDOROGENICHE		AVANFOSSA RECENTE	
			OLOCENE
			CALABRIANO
			PLIOCENE MEDIO/SUP.
			PLIOCENE INFERIORE
SINOROGENICHE		BACINO IRPINO	
			MESSINIANO - TORTONIANO
			ELVEZIANO - LANGHIANO
			AQUITANIANO - EOCENE SUP.
BACINO MOLISANO			EOCENE SUP./MEDIO
			PALEOCENE - CAMPANIANO
			SANTONIANO - ALBIANO
			CENOMANIANO - TITONIANO
			SINEMURIANO - RETICO