

TIME	VRMS	VINT
4	1800	2102
650	2100	2855
850	2300	2785
1050	2400	2970
1250	2500	4518
2020	3400	4162
4020	3800	

CDP 230

TIME	VRMS	VINT
4	1800	2021
520	2000	2360
690	2100	2681
1010	2300	2742
1280	2400	4526
1850	3200	4549
4020	3800	

CDP 312

TIME	VRMS	VINT
4	1800	2292
630	2200	2580
830	2200	2990
1070	2400	3275
1340	2600	4416
2150	3400	
4020	3800	

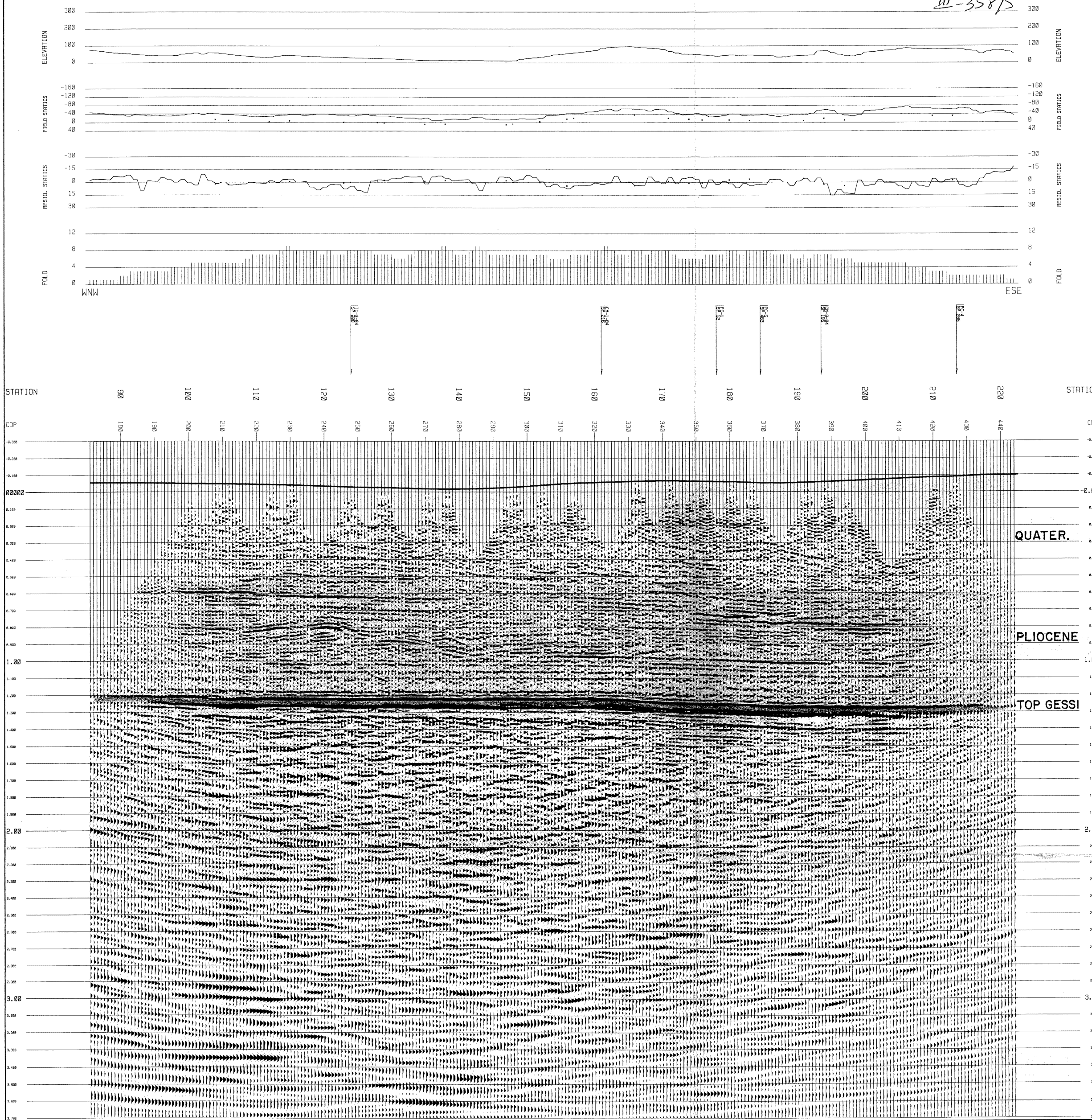
CDP 382

SEZIONE IDROCARBURI  
di ROMA

3 LUG. 1984

Prot. N. 2259

III-358/5



CANADA NORTHWEST, ITALIANA SPA.

LINE : TC-1/CM-2 - 84

STATIONS: 71 - 231

AREA: ITALIA ZONE 4

PERMIT: COLLE DI STELLA

DATUM: MEAN SEA LEVEL

MIGRATION

ENSIGN Geophysics Ltd

ACQUISITION

COMPANY: S.I.R.G. SPA  
DATE: APRIL 1984

SOURCE:  
ENERGY SOURCE: DYNAMITE  
CHARGE: NOMINALLY 5 KG  
HOLE DEPTH: NOMINALLY 125 M  
SOURCE PATTERN: SINGLE HOLE  
SHOT INTERVAL: NOMINALLY 200 M

RECORDING:  
INSTRUMENTS: DFS V  
FILTER: LOW CUT 12 HZ  
HIGH CUT 128 HZ  
NOTCH: 50 HZ  
DATA LENGTH: 7 S  
SAMPLE RATE: 2 MS

CABLE:  
CONFIGURATION: 60 TRACE SPLIT SPREAD  
GROUP INTERVAL: 150 M  
SPACING: 25 M  
FAR OFFSET: 1475 M  
GEOPHONE TYPE: SENSOR SM 4U  
GEOPHONES/GROUP: 30  
GEOPHONE PATTERN: 3 PARALLEL ROWS OF 12. 10 M APART. TOTAL LENGTH 90 M.

PROCESSING

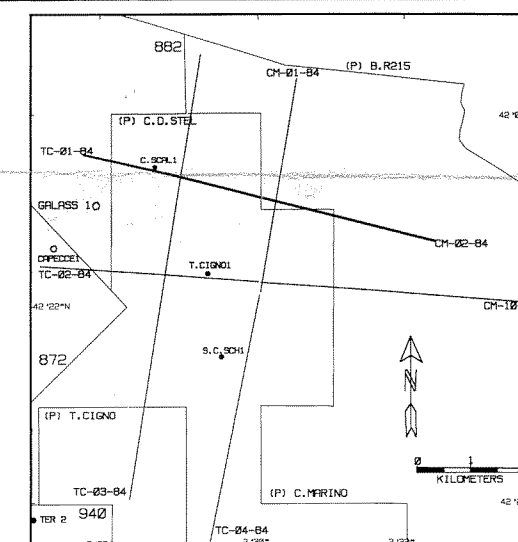
COMPANY: ENSIGN GEOPHYSICS LTD., ADDLESTONE  
CONTRACT NO.: SEVENHOLE, SURREY, ENGLAND.  
DATE: APRIL 1984  
DATA LENGTH: 565  
SAMPLE RATE: 4 S  
4 MS

- DEMULTIPLY AND GAIN RECOVERY
- RESAMPLE TO 4 MS
- TRACE EDIT
- SPHERICAL DIVERGENCE COMPENSATION
- EXPONENTIAL GAIN RECOVERY  
COMPENSATION RATE: 6 DB/S
- FIRST BREAK SUPPRESSION
- ITERATIVE RES.  
WINDOW LENGTH: 500 MS
- SURFACE CONSISTENT DECONVOLUTION:  
DOMAIN: SHOT AND RECEIVER  
TYPE: SPLITTING  
OPERATOR LENGTH: 120 MS  
WHITE NOISE: 0.3  
RESOLUTION GATE: 0.3 - 2.3 S AT 25 M  
APPLICATION GATE: 2.0 - 2.7 S AT 3000 M  
WHOLE TRACE
- ITERATIVE RES.  
WINDOW LENGTH: 500 MS
- COMMON DEPTH POINT SORT  
TYPE: STRAIGHT LINE GEOMETRY
- STATIC APPLICATION  
DATUM: SMOOTH SURFACE
- APPLICATION OF SURFACE CONSISTENT RESIDUAL STATICS  
DERIVATION GATE: 1.0 - 1.5 S  
DERIVATION FREQUENCY: 10 - 30 HZ  
PILOT LENGTH: 3 TRACES  
MAX. SHIFT: 50 MS
- VELOCITY CORRECTION  
DERIVATION: CONSTANT VELOCITY STACKS
- APPLICATION OF NON-SURFACE CONSISTENT RESIDUAL STATICS  
DERIVATION GATE: 1.0 - 1.5 S  
PILOT LENGTH: 3 TRACES  
MAX. SHIFT: 10 MS
- NORMAL MOVEOUT MUTE  
TIME (S): OFFSET (M)  
4 25  
200 125  
1100 1475  
2115 3000
- COMMON DEPTH POINT STACK  
NOMINAL TYPE: 75% X  
ROOT N FOLD COMPENSATION
- FILTER  
TIME (S) LOW-CUT HZ (DB/OCT) HIGH-CUT HZ (DB/OCT)  
0.0 - 4.0 8 (50) 60 (80)  
3.0 - 10.0 8 (50) 45 (80)
- WAVE EQUATION MIGRATION  
VELOCITY FIELD: 80% SMOOTHED RMS  
AVERAGED FLOATING DATUM  
TIME STEP: 64 MS
- FILTER  
TIME (S) LOW-CUT HZ (DB/OCT) HIGH-CUT HZ (DB/OCT)  
0.0 - 4.0 10 (50) 40 (80)  
3.0 - 10.0 10 (50) 40 (80)
- STATIC APPLICATION  
DATUM: MEAN SEA LEVEL

N.B. ALL FILTER CUTS AND SLOPES SPECIFIED AT 3 DB DOWN POINT

DISPLAY

SYSTEM: SCITEX LASER PLOTTER  
VERTICAL SCALE: 5 CM/SEC  
HORIZONTAL SCALE: 1:25,000  
BIAS: 15%  
GAIN: -1 DB  
POLARITY: SEG:BLACK IS POSITIVE



ALL. 4