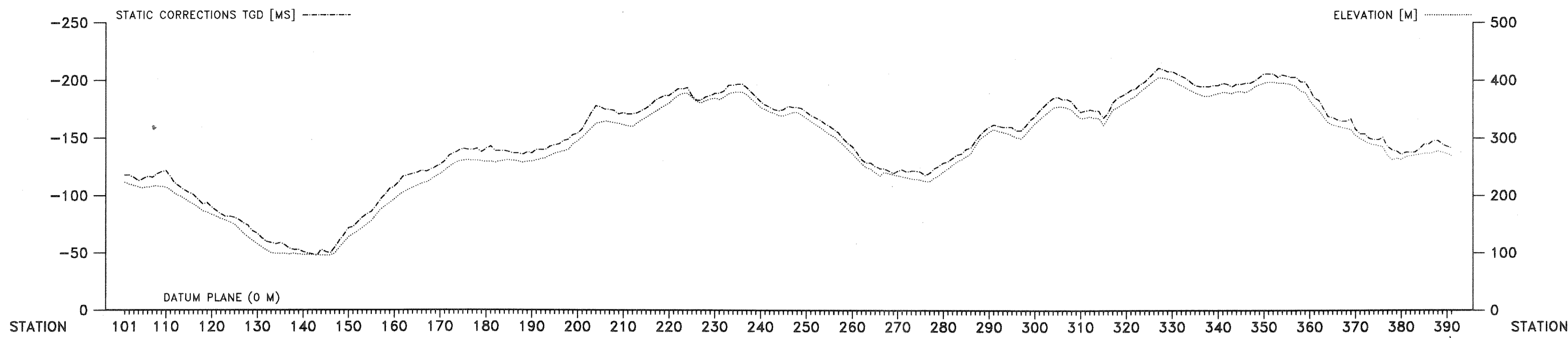


CB-102-89-FR



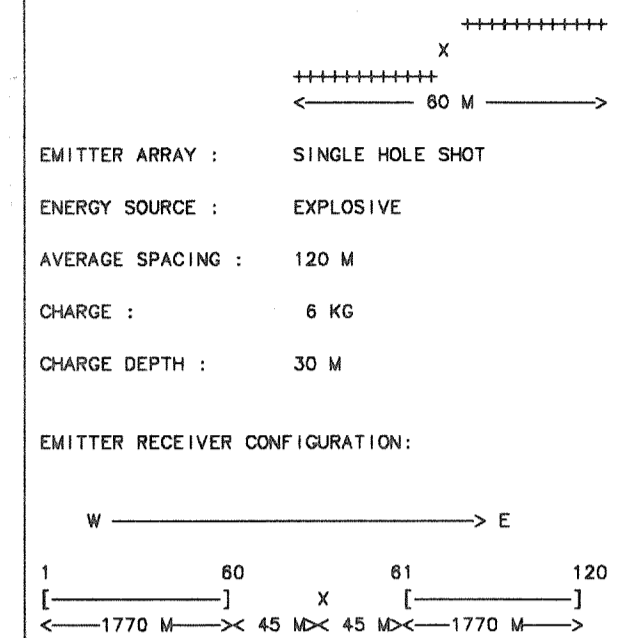
Time	Time	Time	Time	Time	Time
ms	ms	ms	ms	ms	ms
100	1100	2100	3100	4100	5100
200	1200	2200	3200	4200	5200
300	1300	2300	3300	4300	5300
400	1400	2400	3400	4400	5400
500	1500	2500	3500	4500	5500
600	1600	2600	3600	4600	5600
700	1700	2700	3700	4700	5700
800	1800	2800	3800	4800	5800
900	1900	2900	3900	4900	5900
1000	2000	3000	4000	5000	6000
1100	2100	3100	4100	5100	6100
1200	2200	3200	4200	5200	6200
1300	2300	3300	4300	5300	6300
1400	2400	3400	4400	5400	6400
1500	2500	3500	4500	5500	6500
1600	2600	3600	4600	5600	6600
1700	2700	3700	4700	5700	6700
1800	2800	3800	4800	5800	6800
1900	2900	3900	4900	5900	6900
2000	3000	4000	5000	6000	7000
2100	3100	4100	5100	6100	7100
2200	3200	4200	5200	6200	7200
2300	3300	4300	5300	6300	7300
2400	3400	4400	5400	6400	7400
2500	3500	4500	5500	6500	7500
2600	3600	4600	5600	6600	7600
2700	3700	4700	5700	6700	7700
2800	3800	4800	5800	6800	7800
2900	3900	4900	5900	6900	7900
3000	4000	5000	6000	7000	8000
3100	4100	5100	6100	7100	8100
3200	4200	5200	6200	7200	8200
3300	4300	5300	6300	7300	8300
3400	4400	5400	6400	7400	8400
3500	4500	5500	6500	7500	8500
3600	4600	5600	6600	7600	8600
3700	4700	5700	6700	7700	8700
3800	4800	5800	6800	7800	8800
3900	4900	5900	6900	7900	8900
4000	5000	6000	7000	8000	9000
4100	5100	6100	7100	8100	9100
4200	5200	6200	7200	8200	9200
4300	5300	6300	7300	8300	9300
4400	5400	6400	7400	8400	9400
4500	5500	6500	7500	8500	9500
4600	5600	6600	7600	8600	9600
4700	5700	6700	7700	8700	9700
4800	5800	6800	7800	8800	9800
4900	5900	6900	7900	8900	9900
5000	6000	7000	8000	9000	10000

RECORDING

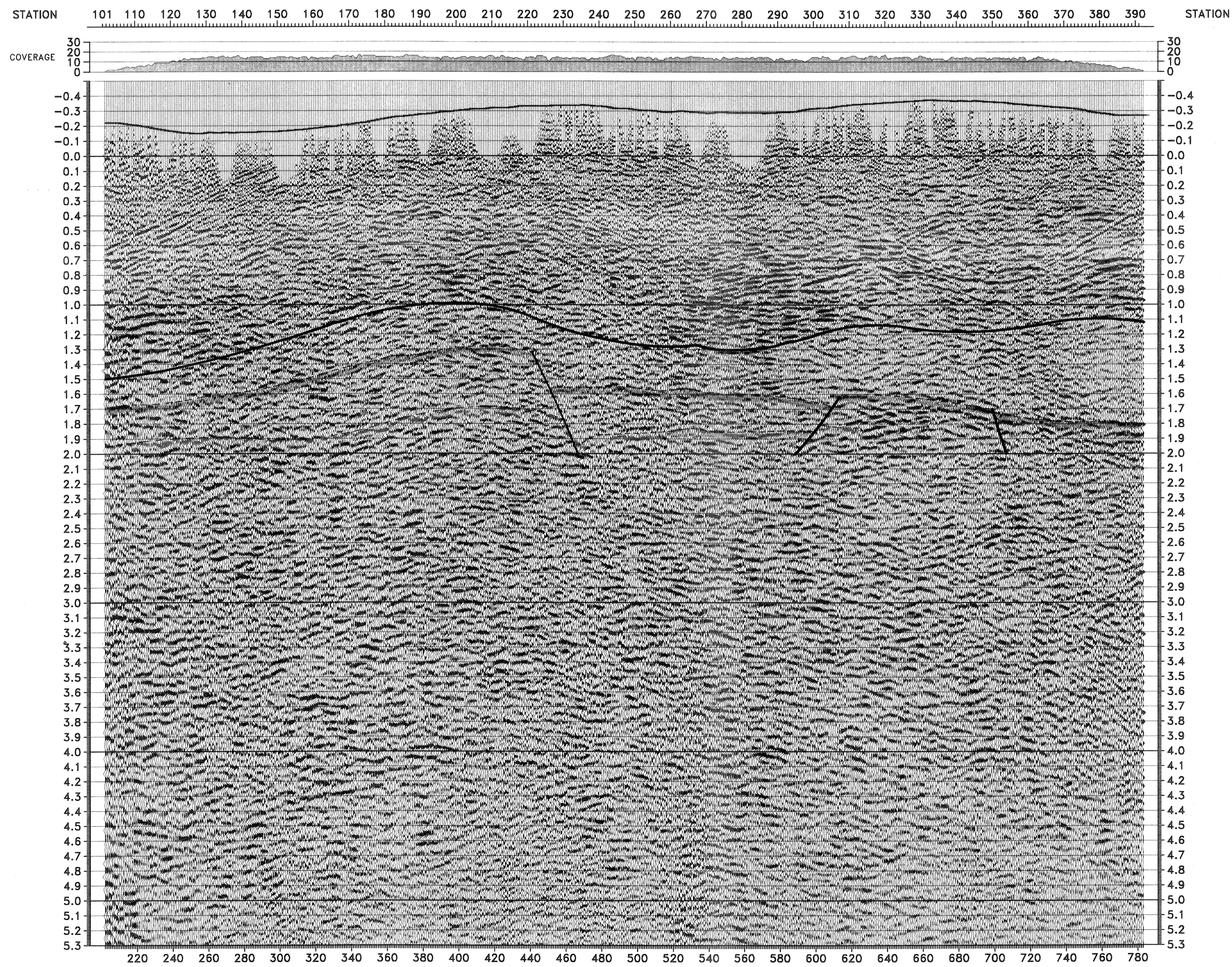
FIELD PARTY : RIG 40
 CONTRACTOR : R.I.G.
 RECORDING PERIOD : 31.08.-05.09.89
 RECORDING SYSTEM : SERCEL 348
 TAPE FORMAT : SEG-B, 9 TRACK, 6250 BPI
 POLARITY OF SYSTEM : SEG-CODE 0001
 SUBSURFACE COVERAGE : 15 FOLD
 RECORD LENGTH : 6 S
 SAMPLING RATE : 2 MS
 FILTER : LOW-CUT 12.5 HZ 12 DB/OCT
 HIGH-CUT 125 HZ 72 DB/OCT
 NOTCH OUT
 GAIN CONTROL : CONSTANT GAIN
 RECEIVER TYPE : SM 4 (10 HZ)
 NO. OF GROUPS 120, SPACING 30 M
 GROUP LENGTH
 24 RECEIVERS PER GROUP

PROCESSING

INPUT CREW : KOELLER/HARZ
 SUPERVISOR : ROSILIUS
 PRAKLA-SEISMOS PROCESSING NO. 89 5 236 50
 1 INPUT : TAPE FORMAT: SEG-B, 9 TRACK, 6250 BPI
 SAMPLING RATE 2 MS, 120 CHANNELS,
 PROCESSING LENGTH 6 S
 2 RESAMPLING TO 4 MS (ANTIALIAS FILTER 90 HZ)
 3 CDP SORT
 4 MINIMUM-PHASE TRANSFORMATION OF RECORDER RESPONSE
 5 CORRECTION OF SPHERICAL DIVERGENCE
 6 DECONVOLUTION: TYPE PREDICTIVE, TIMEVARIANT, 2 GATES,
 PRED. INTERVAL 24 MS, OPERATOR LENGTH: 120 MS
 TRAVEL TIMES 100% TIME PREWH. FACTOR
 MS MS
 SHOTNEAR SHOTFAR SHOTNEAR SHOTFAR
 0 M 1800 M 0 M 1800 M
 200-2300 600-2500 1300 1500 1%
 2100-4100 2300-4100 3100 3200 10%
 7 STATIC CORRECTIONS (CALCULATED BY THE FIELD PARTY)
 CORRECTION VELOCITY: 2000 M/S, DATUM PLANE: 0 M
 RECALCULATED FOR INTERMEDIATE TIME LEVEL (ITL)
 AUTOMATIC RESIDUAL STATIC CORRECTIONS
 (SURFACE CONSISTENT, 4 ITERATIONS, GATE: 400-2300 MS)
 8 DYNAMIC CORRECTIONS DERIVED FROM V-ANALYSES
 9 NORMALIZATION USING AVERAGE VALUES (4 GATES, SEE TABLE)
 10 HORIZONTAL STACKING: 15 FOLD
 (STACKING VELOCITIES SEE TOPLABEL)
 11 BLOCK CORRECTION : 500 MS
 12 CORRECTION FROM INTERMEDIATE TIME LEVEL TO
 DATUM PLANE 0 M, CORRECTION VELOCITY : 2000 M/S
 13 FOCUSON OPERATOR: LENGTH 200 M, RECOMPUTED EVERY 165 M
 14 NOISE REDUCTION FILTER (+/- 8 MS/TRACE)
 15 COHERENCY FILTER 32-20% MODEL, MAXIMUM DIP= +/- 7 MS/TRACE
 16 TIMEVARIANT FREQUENCY FILTER
 100% TIME LOW-CUT HIGH-CUT
 MS HZ DB/OCT HZ DB/OCT
 500 14 24 65 48
 1200 11 24 55 48
 3000 10 24 45 48
 5000 10 24 35 48
 17 NORMALIZATION USING AVERAGE VALUES (6 GATES, SEE TABLE)
 18 DISPLAY: SCALE 1:25000, 1 S = 5 CM, TRACE SPACING: 0,6 MM
 POLARITY : SEG (COMPRESSIONAL EVENTS = WHITE)



COG-07-88 | 292.5 COG-06-88 | 287 COG-05-88 | 355.5



FIAT RIMI ITALY

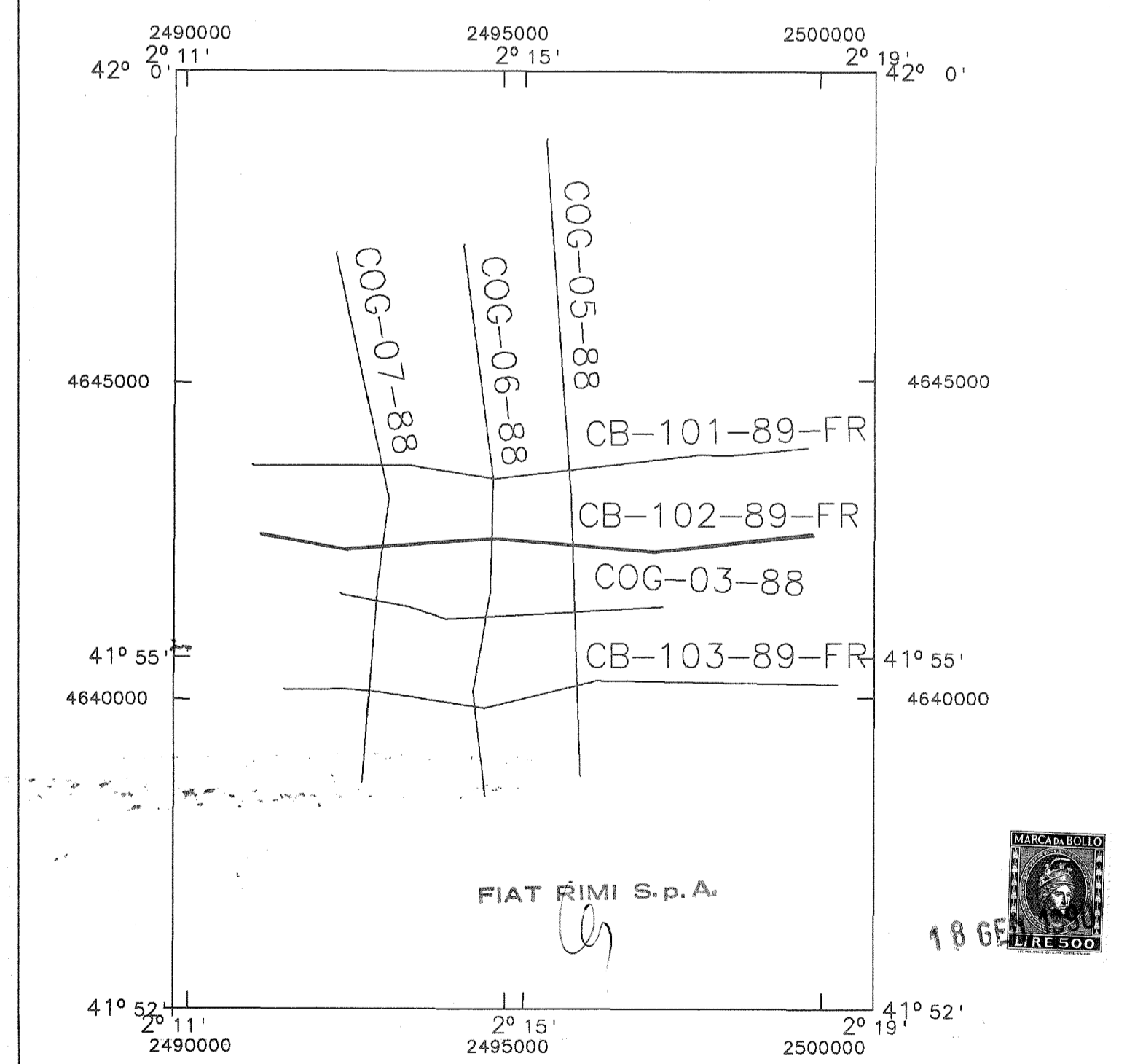
INPUT CREW: _____ DATE: _____ S. 1:25000 ENCL.

COLLE GUARDIOLA
 LINE CB-102-89-FR (SP. 102-391)
 STACK WITH COHERENCY FILTER
 15 FOLD

895 236

FIAT RIMI

PRAKLA-SEISMOS



FIAT RIMI

Scale

All. n° 3 Data GEN. 1990 N° Arch. _____

PERMESSO
 "COLLE GUARDIOLA"
 SEZIONE SISMICA RAPPRESENTATIVA