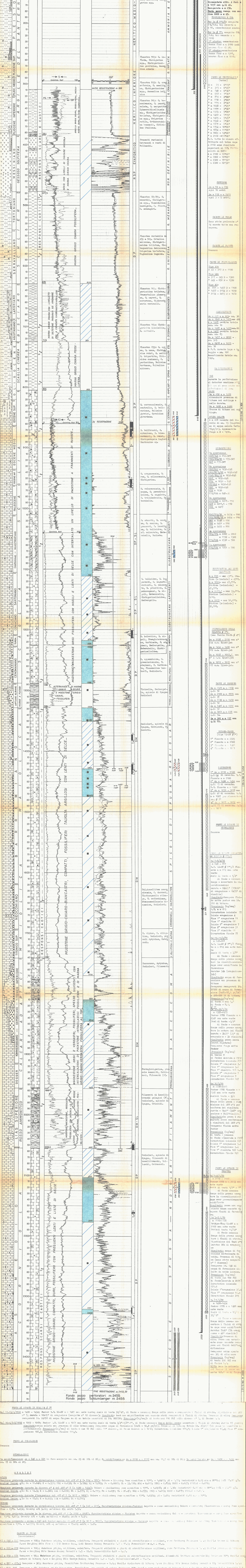


Table with 4 columns: Disegno, Data, Firma, and other administrative details.

Legend for geological symbols including Rocce Carbonatiche, Rocce Ignee e Metamorfiche, and other rock types.

Table with 2 columns: Impresa (GOMAR G. & NATIONAL) and other project information.



Summary text at the bottom of the log, including well identification and coordinates.

Table with 2 columns: ANALISI (Analysis) and other data points.