

South East

# RED EAGLE RESOURCES sr l

## Cerchio Block Italy

### Line: 1-80-AZ-10 S.P. 443 - 791

### DMO Migration

Datum: 600 m. Vr: 1600 m./sec.

Processed by:  
Magnolia Energy Services, Inc.  
Houston, Texas  
713 975-0965 Fax: 713 975-1277

#### FIELD PARAMETERS

Recorded by: C.G.G. Date: May, 1980 Party: 29

Instruments:  
Type: SN 348 Number of Channels: 96 Format: 9 track, Seg-b  
Record Length: 30000 sec Sweep Length: 24000 Sample Rate: 4 ms.  
Filters: 12.5 Hz: 12 db/oct. -125 Hz: 72 db/oct. Density: 6250

Energy Source:  
Type: Vibroseis No. Vibrators: 3 Sweep Freq: 12-70 Hz.  
V.P. Int.: 35 m. Folds: 48

Geophones:  
Type: GSD 200 Freq: 10 Hz No./group: 36  
Geophone Int.: 2 m. Group Int.: 35 m.

Spread:  
Tr 1 48 VP 49 96  
O/S (m.) |<-1645->|<-245->|<-210->|<-1645->|

#### PROCESSING SEQUENCE

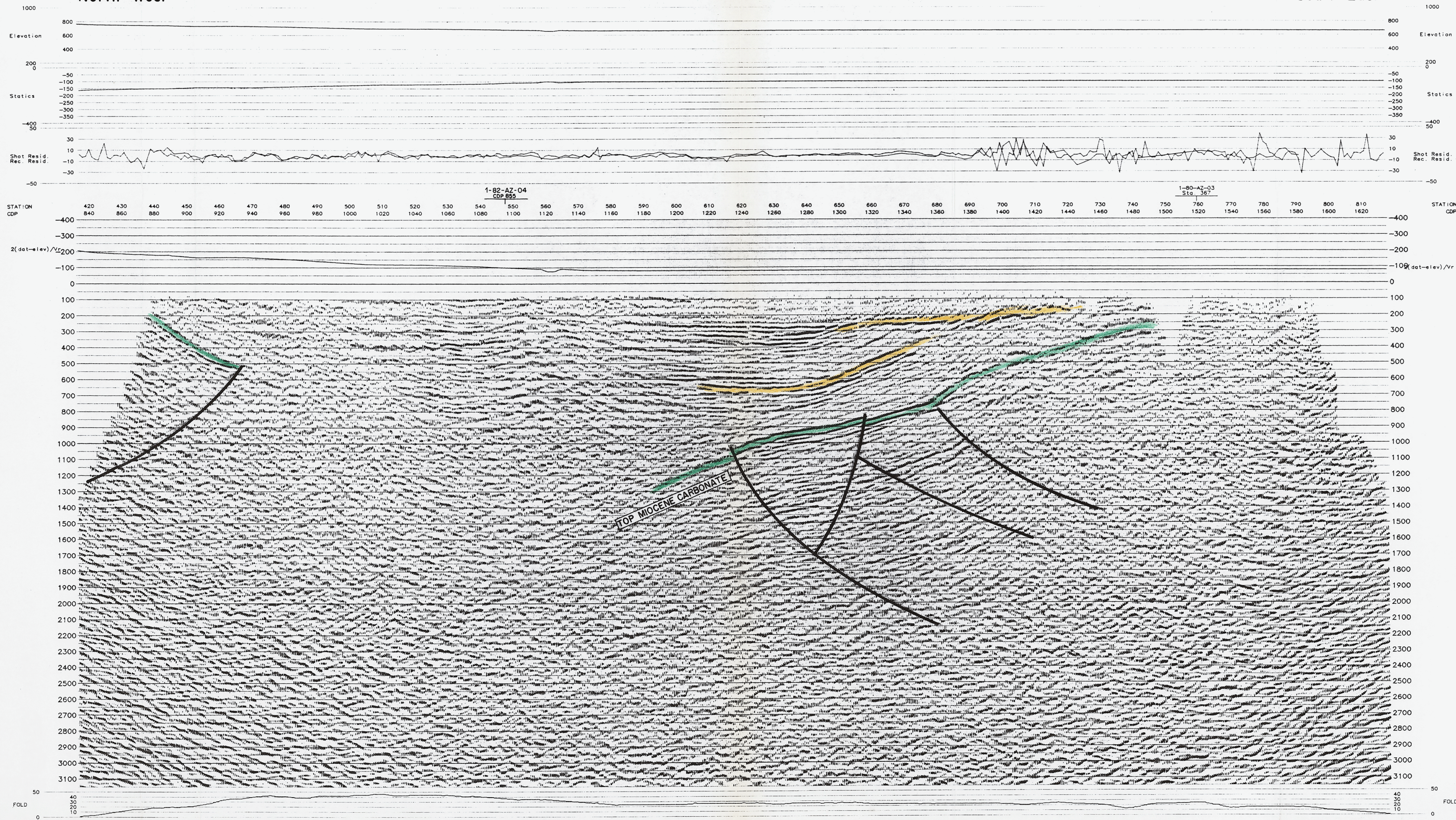
- Demultiplex
- Vibroseis correlation
- Record and trace edit
- Geometry Definition and cdp gather
- Convert to minimum phase
- Gain recovery  
Agc: 750 msec.
- Deconvolution  
Type: Adaptive decon  
Operator length: 80 ms.  
Preshifting: 1 s
- Elevation statics  
Datum: Floating  
Replacement Velocity: 1600 m./sec.
- Velocity analysis  
Type: Constant Velocity Stacks (entire line)  
Velocity range: 1200 - 5000 m/sec.  
Number of panels: 35
- Normal moveout correction
- Automatic residual statics (surface consistent)  
Type: Data trace correlation method  
Window: 500 - 2000 ms.  
Correlation +/- 25 ms.
- Velocity analysis  
Type: Constant Velocity Stacks (entire line)  
Velocity range: 1200 - 5000 m/sec.  
Number of panels: 35
- Normal moveout correction
- Automatic residual statics (surface consistent)  
Type: Data trace correlation method  
Window: 500 - 2000 ms.  
Correlation +/- 25 ms.
- FX Decon  
Window: 750 ms.  
Prediction window length: 10 traces
- Dmo/Dmo velocity analysis
- Mute application
- Cdp stack
- Migration - 130% of posted velocities
- Filter application 10/14 - 40/50 Hz.
- Trace scaling - Agc  
Window: 500 msec.
- FX Decon

#### DISPLAY PARAMETERS

Thu Oct 23 15:14:09 1997 Static Shift = -125  
Traces/Inches = 24 Inches/Second = 4  
Bias Percent = 0 Clip Limit = 2  
Gain Set = 0.65 RMS Amplitude = 0.92731  
Gain Constant = 700.952

ADVANCE ProMAX

North-West



South-East

