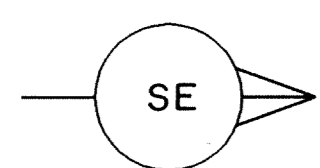


# FR-343-85V

CDF 4 TO CDF 387



5 MAY 1988  
111-246-2

FR-340-85V  
CDF 525

CDF-56  
V<sub>1</sub>

CDF-120  
V<sub>2</sub>

FR-310-80  
SP 1537

CDF-223  
V<sub>3</sub>

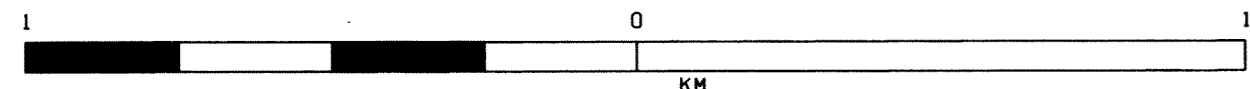
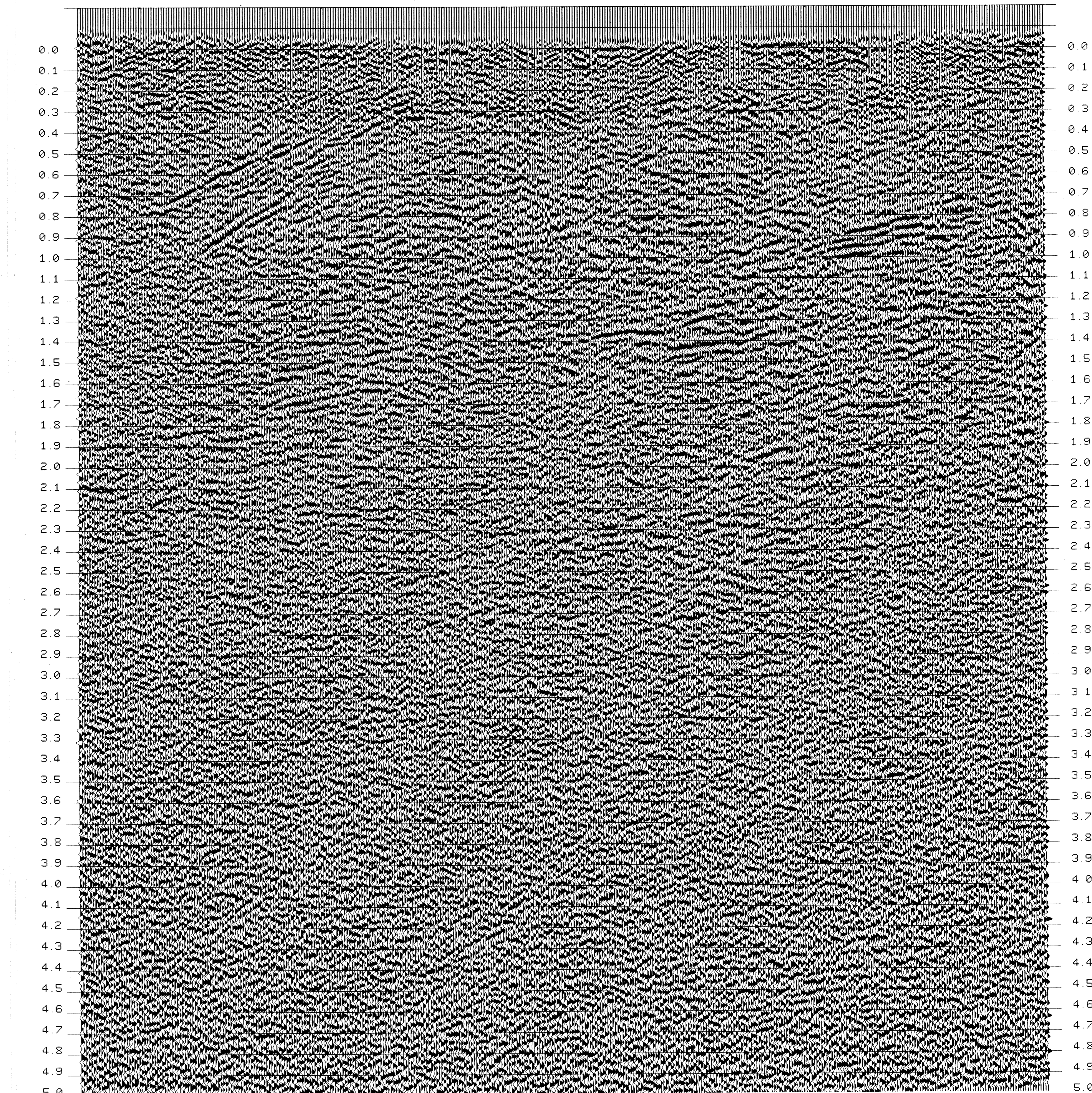
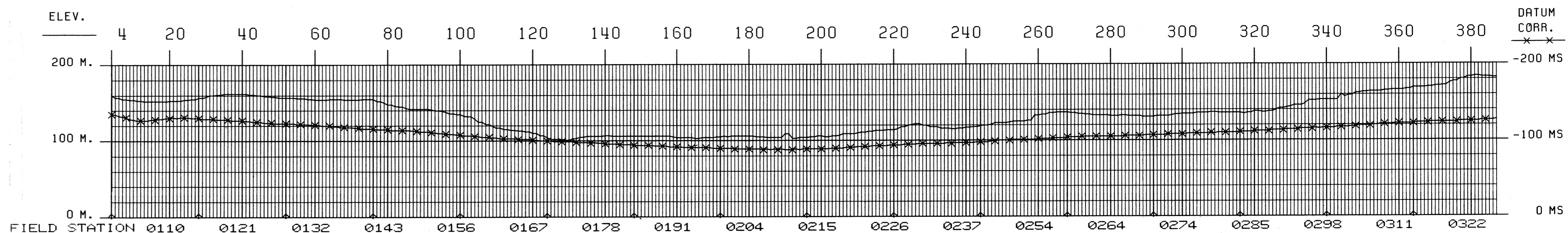
CDF-264  
V<sub>4</sub>

CDF-312  
V<sub>5</sub>

CDF-334  
V<sub>6</sub>

LINE FR-343-85V

**CROOKED LINE  
6000PCT DBS-TVF**



**AGIP**

**WESTERN RICERCHE GEOFISICHE  
MILAN - ITALY**

AREA ITALIA  
PROSPECT CECCANO

DATE SHOT ..... MARCH 1988  
DATE PROCESSED ..... JUNE 1988

**RECORDING DATA**

PARTY NUMBER GLOBE 8  
RECORDER MDS 16  
GAIN 1.5 P  
RECORDING FILTER (HZ) 7.5-93  
NOTCH FILTER (HZ) OUT  
RECORD LENGTH 21 SEC  
SAMPLE RATE (MS) 4  
SUBSURFACE COVERAGE 6000 PCT  
GROUP INTERVAL (METERS) 30  
NUMBER OF GROUPS 120  
STATIC COMPUTATION VELOCITY 3000 M/S  
DATUM PLANE SEA LEVEL  
UPWARD GROUND MOTION = NEGATIVE NUMB. ON TAPE  
POLARITY = 0011

**PROCESSING SEQUENCE**

- 1 EDIT GEO.AMPL.
- 2 TIME VARIANT PREFILTER
- 3 PREPROCESSOR/DECON
- 4 CROOKED PROFILE ADJUSTMENT
- 5 SURF. CONSISTENT RESID. STATICS.
- 6 VELOCITY ANALYSIS
- 7 NMO, STATICS, MUTE APPLICATION.
- 8 SURF. CONSISTENT RESID. STATICS.
- 9 STACK 6000PCT
- 10 TIME VARIANT FILTER
- 11 RMS GAIN

**SEISMOMETER ARRAY**

GEOPHONE TYPE SENSOR SM4B  
GEOPHONE FREQUENCY 14 HZ  
GEOPHONE/GROUP 24

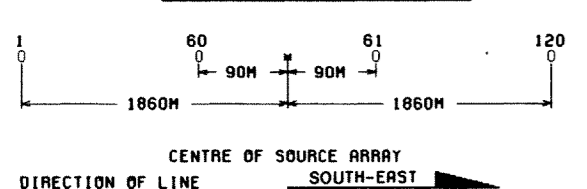
X = 60 M

**V.P. PATTERN**

ENERGY SOURCE VIBROSEIS  
VIBRATORS/V.P. 4  
SWEEP/V.P. 16  
SWEEP (HZ) 12-64

X = 84 M

**SPREAD DIMENSIONS**



**LEGEND**

V VELOCITY ANALYSIS

INTERSECTIONS

ANALYST *francisco* DATE 6/88

**LINE LOCATION MAP**

