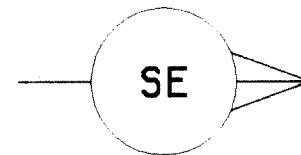


FR-333-83

S.P. 112 TO S.P. 494

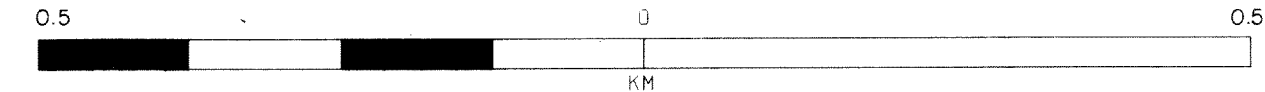
SEZIONE L.L. CARBURI
di ROMA
3 AGG. 1987
Prot. NO. 3.145
M-261-6



1200PCT DBS-MIG-TVF
TIME MIGRATED SECT.

Allegato	Data	Dis. n.
3	MAGGIO 1987	783/2

30 LUG 1987
MAGGIO 1987
MIRE 3000



TIME	RMS VEL
0.10	2400
0.23	2630
0.33	2920
0.54	3470
0.85	3880
1.37	4080
5.00	4300
7.00	4400

DATUM CORR = -170 MS

TIME	RMS VEL
0.10	2510
0.22	2030
0.39	3160
0.50	3400
0.78	3800
1.00	4200
7.00	4300

DATUM CORR = -137 MS

TIME	RMS VEL
0.10	2400
0.25	2600
0.38	3080
0.49	3200
0.70	3500
0.95	3700
1.45	3850
5.00	4200
7.00	4300

DATUM CORR = -114 MS

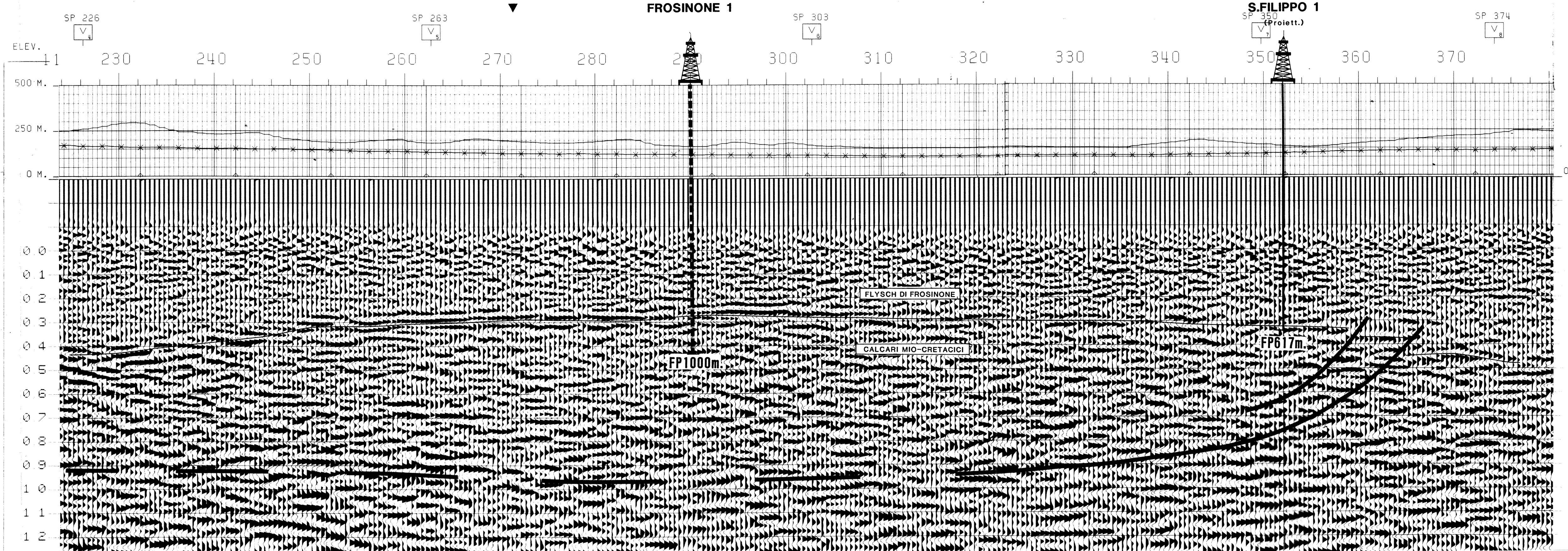
TIME	RMS VEL
0.10	2400
0.24	2490
0.43	2970
0.56	3270
0.82	3610
1.00	3760
1.31	3890
2.00	4070
5.00	4320
7.00	4420

DATUM CORR = -117 MS

TIME	RMS VEL
0.10	2400
0.18	2680
0.34	2800
0.63	3590
0.90	3910
1.15	4040
5.00	4380
7.00	4480

DATUM CORR = -137 MS

LINE FR 348-86V
SP 127



AGIP

WESTERN RICERCHE GEOFISICHE
MILAN - ITALY

ITALIA-ZONA 4
PROSPECT CECCANO

DATE SHOT: NOVEMBER, 1983
DATE PROCESSED: FEBRUARY, 1984

RECORDING DATA

PROCESSING SEQUENCE

DATUM PLANE = SEA LEVEL
STATICS COMPUT. VELOCITY: 3000 M/SEC
INSTRUMENTS
CONTRACTOR: GLOBE EXPLORATION
PART NUMBER: GLOBE-4
RECORDING SYSTEM: HOOR-4200
FORMAT: HOOR-R32
RECORDING FILTERS: 10HZ-240B/OCT
ANTIALIAS FILTERS: 106.7HZ-620B/OCT
NOTCH FILTER: 50HZ OUT
SAMPLE RATE: 2 MS
RECORD LENGTH: 7 SEC

DEMULPLEX GEOPH. AMPL. 2MS S.R.
SUBSAMPLE TO 4MS SAMPLE RATE
PROCESSED LENGTH: 7 SEC
NOTCH FILTER
PREPROCESSOR-D.B.S.
A) COMMON DEPTH FAMILY GATHER
B) GEOMETRIC SPREADING GAIN APPLIED
C) 8HZ LO-CUT PREFILTER APPLIED
D) DECONVOLUTION
TYPE: MIN. PHASE INVERSE FILTER
NUMBER OF WINDOW=3
VAR. MIN. PREDICT. LAG (MS)= 12 24 32