

TIME	URS	U INT
0.004	2900	2900
0.010	2900	2900
0.020	2900	2900
0.030	2900	2900
0.040	2900	2900
0.050	2900	2900
0.060	2900	2900
0.070	2900	2900
0.080	2900	2900
0.090	2900	2900
0.100	2900	2900
0.110	2900	2900
0.120	2900	2900
0.130	2900	2900
0.140	2900	2900
0.150	2900	2900
0.160	2900	2900
0.170	2900	2900
0.180	2900	2900
0.190	2900	2900
0.200	2900	2900
0.210	2900	2900
0.220	2900	2900
0.230	2900	2900
0.240	2900	2900
0.250	2900	2900
0.260	2900	2900
0.270	2900	2900
0.280	2900	2900
0.290	2900	2900
0.300	2900	2900
0.310	2900	2900
0.320	2900	2900
0.330	2900	2900
0.340	2900	2900
0.350	2900	2900
0.360	2900	2900
0.370	2900	2900
0.380	2900	2900
0.390	2900	2900
0.400	2900	2900
0.410	2900	2900
0.420	2900	2900
0.430	2900	2900
0.440	2900	2900
0.450	2900	2900
0.460	2900	2900
0.470	2900	2900
0.480	2900	2900
0.490	2900	2900

TIME	URS	U INT
0.004	2900	2900
0.010	2900	2900
0.020	2900	2900
0.030	2900	2900
0.040	2900	2900
0.050	2900	2900
0.060	2900	2900
0.070	2900	2900
0.080	2900	2900
0.090	2900	2900
0.100	2900	2900
0.110	2900	2900
0.120	2900	2900
0.130	2900	2900
0.140	2900	2900
0.150	2900	2900
0.160	2900	2900
0.170	2900	2900
0.180	2900	2900
0.190	2900	2900
0.200	2900	2900
0.210	2900	2900
0.220	2900	2900
0.230	2900	2900
0.240	2900	2900
0.250	2900	2900
0.260	2900	2900
0.270	2900	2900
0.280	2900	2900
0.290	2900	2900
0.300	2900	2900
0.310	2900	2900
0.320	2900	2900
0.330	2900	2900
0.340	2900	2900
0.350	2900	2900
0.360	2900	2900
0.370	2900	2900
0.380	2900	2900
0.390	2900	2900
0.400	2900	2900
0.410	2900	2900
0.420	2900	2900
0.430	2900	2900
0.440	2900	2900
0.450	2900	2900
0.460	2900	2900
0.470	2900	2900
0.480	2900	2900
0.490	2900	2900

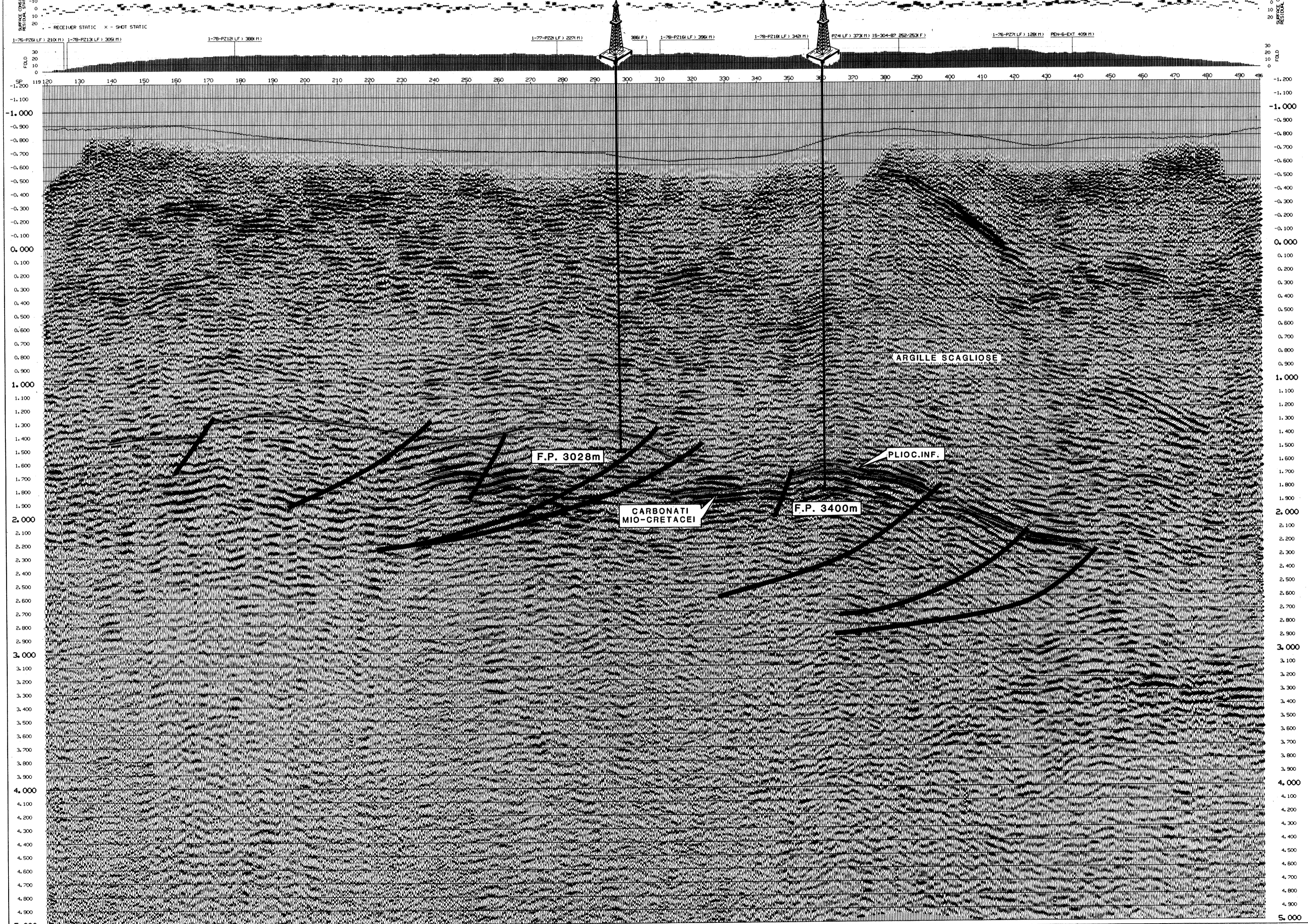
TIME	URS	U INT
0.004	2900	2900
0.010	2900	2900
0.020	2900	2900
0.030	2900	2900
0.040	2900	2900
0.050	2900	2900
0.060	2900	2900
0.070	2900	2900
0.080	2900	2900
0.090	2900	2900
0.100	2900	2900
0.110	2900	2900
0.120	2900	2900
0.130	2900	2900
0.140	2900	2900
0.150	2900	2900
0.160	2900	2900
0.170	2900	2900
0.180	2900	2900
0.190	2900	2900
0.200	2900	2900
0.210	2900	2900
0.220	2900	2900
0.230	2900	2900
0.240	2900	2900
0.250	2900	2900
0.260	2900	2900
0.270	2900	2900
0.280	2900	2900
0.290	2900	2900
0.300	2900	2900
0.310	2900	2900
0.320	2900	2900
0.330	2900	2900
0.340	2900	2900
0.350	2900	2900
0.360	2900	2900
0.370	2900	2900
0.380	2900	2900
0.390	2900	2900
0.400	2900	2900
0.410	2900	2900
0.420	2900	2900
0.430	2900	2900
0.440	2900	2900
0.450	2900	2900
0.460	2900	2900
0.470	2900	2900
0.480	2900	2900
0.490	2900	2900

TIME	URS	U INT
0.004	2900	2900
0.010	2900	2900
0.020	2900	2900
0.030	2900	2900
0.040	2900	2900
0.050	2900	2900
0.060	2900	2900
0.070	2900	2900
0.080	2900	2900
0.090	2900	2900
0.100	2900	2900
0.110	2900	2900
0.120	2900	2900
0.130	2900	2900
0.140	2900	2900
0.150	2900	2900
0.160	2900	2900
0.170	2900	2900
0.180	2900	2900
0.190	2900	2900
0.200	2900	2900
0.210	2900	2900
0.220	2900	2900
0.230	2900	2900
0.240	2900	2900
0.250	2900	2900
0.260	2900	2900
0.270	2900	2900
0.280	2900	2900
0.290	2900	2900
0.300	2900	2900
0.310	2900	2900
0.320	2900	2900
0.330	2900	2900
0.340	2900	2900
0.350	2900	2900
0.360	2900	2900
0.370	2900	2900
0.380	2900	2900
0.390	2900	2900
0.400	2900	2900
0.410	2900	2900
0.420	2900	2900
0.430	2900	2900
0.440	2900	2900
0.450	2900	2900
0.460	2900	2900
0.470	2900	2900
0.480	2900	2900
0.490	2900	2900

TIME	URS	U INT
0.004	2900	2900
0.010	2900	2900
0.020	2900	2900
0.030	2900	2900
0.040	2900	2900
0.050	2900	2900
0.060	2900	2900
0.070	2900	2900
0.080	2900	2900
0.090	2900	2900
0.100	2900	2900
0.110	2900	2900
0.120	2900	2900
0.130	2900	2900
0.140	2900	2900
0.150	2900	2900
0.160	2900	2900
0.170	2900	2900
0.180	2900	2900
0.190	2900	2900
0.200	2900	2900
0.210	2900	2900
0.220	2900	2900
0.230	2900	2900
0.240	2900	2900
0.250	2900	2900
0.260	2900	2900
0.270	2900	2900
0.280	2900	2900
0.290	2900	2900
0.300	2900	2900
0.310	2900	2900
0.320	2900	2900
0.330	2900	2900
0.340	2900	2900
0.350	2900	2900
0.360	2900	2900
0.370	2900	2900
0.380	2900	2900
0.390	2900	2900
0.400	2900	2900
0.410	2900	2900
0.420	2900	2900
0.430	2900	2900
0.440	2900	2900
0.450	2900	2900
0.460	2900	2900
0.470	2900	2900
0.480	2900	2900
0.490	2900	2900

TIME	URS	U INT
0.004	2900	2900
0.010	2900	2900
0.020	2900	2900
0.030	2900	2900
0.040	2900	2900
0.050	2900	2900
0.060	2900	2900
0.070	2900	2900
0.080	2900	2900
0.090	2900	2900
0.100	2900	2900
0.110	2900	2900
0.120	2900	2900
0.130	2900	2900
0.140	2900	2900
0.150	2900	2900
0.160	2900	2900
0.170	2900	2900
0.180	2900	2900
0.190	2900	2900
0.200	2900	2900
0.210	2900	2900
0.220	2900	2900
0.230	2900	2900
0.240	2900	2900
0.250	2900	2900
0.260	2900	2900
0.270	2900	2900
0.280	2900	2900
0.290	2900	2900
0.300	2900	2900
0.310	2900	2900
0.320	2900	2900
0.330	2900	2900
0.340	2900	2900
0.350	2900	2900
0.360	2900	2900
0.370	2900	2900
0.380	2900	2900
0.390	2900	2900
0.400	2900	2900
0.410	2900	2900
0.420	2900	2900
0.430	2900	2900
0.440	2900	2900
0.450	2900	2900
0.460	2900	2900
0.470	2900	2900
0.480	2900	2900
0.490	2900	2900

PESCOPENN. 1 (proiett.) SELVA PIANA 1 (proiett.)



**SORI**  
 AREA CASTEL DEL GIUDICE ITALIA  
 LINE 15-300-87 SPs 119-496  
**FINAL STACK WITH COHERENCY**  
 COMPRESSA 718604  
 RECORDED BY Globe Exploration Crew No. 4  
 PROCESSED BY Seismograph Service (England) Ltd.  
**SPECIAL REMARKS**  
 STATIC CORRECTION TO DATUM ADJUSTED FOR VARIABLE SUB-LEATHERING VELOCITY.  
 PROCESSED THROUGH PHOENIX U. P. U.

**RECORDING PARAMETERS**

INSTRUMENTS	REG 16	DYNAPITE SOURCE PARAMETERS:	
NO OF CHANNELS	144	SYNTHETIC SPREAD	2145 15 0 15 2145
FORMAT	SEOB	24 FOLDS (NOMINAL)	
SAMPLE RATE	7 ms	SPREAD	2145-15-SP-15-2145m
RECORD LENGTH	7 secs	RECORDING DATE	28th Oct 1987
LO-CUT FILTER	120Hz	DETECTORS	28th Oct 1987
HI-CUT FILTER	2400Hz	TYPE	3MB 10Hz Array Length 57.5m
NOTCH FILTER	OUT	RES.	24 geophones 1m (line 2.5m apart).
STATION INTERVAL	30m		
SP INTERVAL	50m (Nominal)		
COVERAGE	24 FOLDS (Nominal)		
SHOT DEPTH	30m (Nominal)		
CHARGE	10-15g		

**PROCESSING**

SEQUENCE	PARAMETERS
1. DEMULTIPLEX	RESAMPLE TO 4ms. SPECTRAL GAIN RECOVERY. TWI, 25ms @ 0.1T. SPECTRAL DIVERGENCE APPLIED 0 - 7.0%.
2. FILTER	INSTRUMENT AND GEOPHONE PHASE COMPENSATION FILTER.
3. SORT	SORT INTO C.O.P. ORDER. INTERVAL 15ms. SMOOZE GAIN. PROCESS TO 5.0s.
4. FILTER	15-18-50-80Hz. 0.0 - 1.1Hz. 15-15-50-80Hz. 1.8 - 3.2Hz. 9-12-40-50Hz. 3.8 - 6.0Hz.
5. DECONVOLUTION	OPERATOR 240ms. DERIVED 1st 0.3-2.8Hz. APPLIED 0.0-0.0Hz. GAP 20ms.
6. EQUALISATION	TRACE EQUALISATION TO 70dB. 1000ms WINDOW. UNDERSTANDING BY 1000ms.
7. STATICS (1)	STATIC CORRECTION TO NEAR SURFACE FLOATING DATUM. CORRECTION VELOCITY USED 2200m/s.
8. N.M.G. / MUTE	VELOCITIES PICKED FROM CONSTANT VELOCITY STACKS (1.4 MUTE: 20m/100ms, 200m/250ms, 1450m/800ms, 2145m/1000ms).
9. AUTOSTATICS (1)	SURFACE CONSISTENT RESIDUAL STATICS (150m). CORRELATION WINDOW -0.2-0.2s. MAXIMUM STATIC 25ms. RESIDUAL STATICS APPLIED TO STAGE