

COMPANY: MONTEDISON
 WELL: CAPO NEGRO 1
 FIELD: CASSIBILE
 PROVINCE: SICILY
 SCALE: 1/20011/1000
 NATION: ITALY
 LOCATION: S.CASSIBILE

OTHER SERVICES-
 ISF-SLS-GR
 LDL-CNL-GR
 DIPMETER
 CYBERDIP

SEC: TWP: RGE:
 LATITUDE: 36 56 46 N
 LONGITUDE: 02 43 17 E

PERMANENT DATUM: M.S.L. ELEVATIONS-
 ELEV. OF PERM. DATUM: KB: 34.0 M
 LOG MEASURED FROM: R.T. DF: 34.0 M
 34.0 M ABOVE PERM. DATUM GL: 24.0 M
 DRLG. MEASURED FROM: R.T.

PROGRAM
 TAPE NO:
 20.2
 SERVICE
 ORDER NO:
 BL#0195

DATE: 6 DEC 1981
 RUN NO: 1

DEPTH-DRILLER: 1414.0 M
 DEPTH-LOGGER: 1414.0 M
 BTM. LOG INTERVAL: 1410.0 M
 TOP LOG INTERVAL: 240.0 M

CASING-DRILLER: 241 M
 CASING-LOGGER: 240 M
 CASING: 20" M LB/F
 WEIGHT: M LB/F
 BIT SIZE: 17.5" LB/F
 DEPTH: 1414 M

TYPE FLUID IN HOLE: BENTONITIC
 DENSITY: 1200 LB/G
 VISCOSITY: 45.0 S
 PH: 9.0
 FLUID LOSS: 7.2 C3
 SOURCE OF SAMPLE: FLOWLINE
 RM: 1.660 DHMM AT 40.0 DC
 RMF: 1.280 DHMM AT 20.0 DC
 RMC: 2.370 DHMM AT 20.0 DC
 SOURCE RMF/RMC: PRESS/PRESS
 RM AT BHT: 1.240 DHM AT 60.8 DC
 RMF AT BHT: 0.646 DHM AT 60.8 DC
 RMC AT BHT: 1.196 DHM AT 60.8 DC

TIME CIRC. STOPPED: 0030/6TH.
 TIME LOGGER ON BTM.: 1430/6TH.

MAX. REC. TEMP: 60.8 DC

LOGGING UNIT NO: 2661
 LOGGING UNIT LOC: PESCARA
 RECORDED BY: D.MCGREGOR
 WITNESSED BY: FOSSALUZZA

REMARKS: Rwa from MSFL. Rwa = LLD
 50xMSFL

LOG MERGED FROM TWO DESCENTS.
 SONIC SIGNAL SMALLER THAN USUAL FOR MUCH OF THE LOG.
 THESE SECTIONS RELOGGED AT VERY SLOW SPEED.
 MUD WEIGHT IN G/L.

EQUIPMENT NUMBERS-

NSM.A1733 SGC.JC2571 MRM.A1977 SRS.A843
 SLM.DA1150 SLS.SC103 SLC.KB754 SRE.B867
 DLM.B1887 DLC.BB1759 DLS.D869 DLE.DB806

ALL INTERPRETATIONS ARE OPINIONS BASED ON INFERENCES FROM ELECTRICAL OR OTHER MEASUREMENTS AND WE CANNOT, AND DO NOT GUARANTEE THE ACCURACY OR CORRECTNESS OF ANY INTERPRETATIONS, AND WE SHALL NOT, EXCEPT IN THE CASE OF GROSS OR WILLFUL NEGLIGENCE ON OUR PART, BE LIABLE OR RESPONSIBLE FOR ANY LOSS, COSTS, DAMAGES OR EXPENSES INCURRED OR SUSTAINED BY ANYONE RESULTING FROM ANY INTERPRETATION MADE BY ANY OF OUR OFFICERS, AGENTS OR EMPLOYEES. THESE INTERPRETATIONS ARE ALSO SUBJECT TO OUR GENERAL TERMS AND CONDITIONS AS SET OUT IN OUR CURRENT PRICE SCHEDULE.

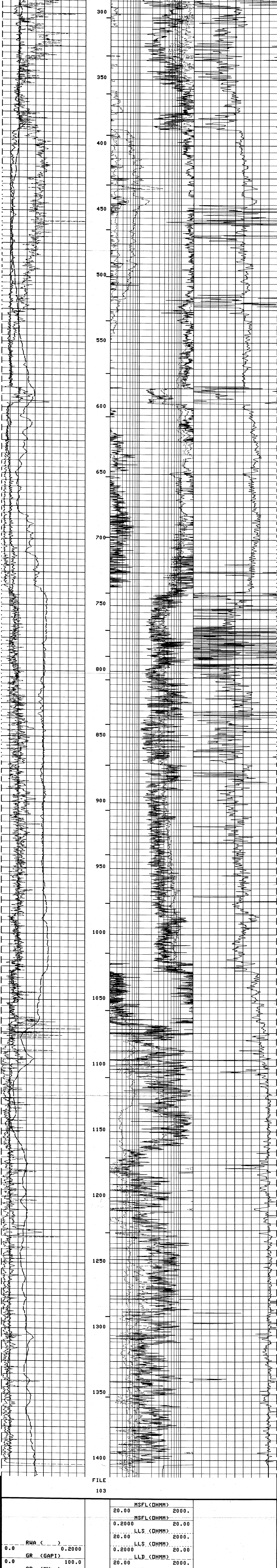
FILE

105

		MSFL (DHMM)	20.00	2000.	
		MSFL (DHMM)	0.2000	20.00	
RWA ()		LLS (DHMM)	20.00	2000.	
0.0	0.2000	LLS (DHMM)	0.2000	20.00	
GR (GAPI)		LLD (DHMM)	20.00	2000.	
0.0	100.0	LLD (DHMM)	0.2000	20.00	
SP (MV)		LLD (DHMM)	0.2000	20.00	140.0
-160.0	40.00				40.00

FILE

103



FILE

103

		MSFL (DHMM)	20.00	2000.	
		MSFL (DHMM)	0.2000	20.00	
RWA ()		LLS (DHMM)	20.00	2000.	
0.0	0.2000	LLS (DHMM)	0.2000	20.00	
GR (GAPI)		LLD (DHMM)	20.00	2000.	
0.0	100.0	LLD (DHMM)	0.2000	20.00	
SP (MV)		LLD (DHMM)	0.2000	20.00	140.0
-160.0	40.00				40.00

PARAMETERS

NAME	VALUE	UNIT	NAME	VALUE	UNIT
CDTS	100.0		BS	17.50	IN
DTF	189.0	US/F	DTM	45.50	US/F
FNUM	1.000		FPHI	SPHI	
DD	0.0		BHS	OPEN	