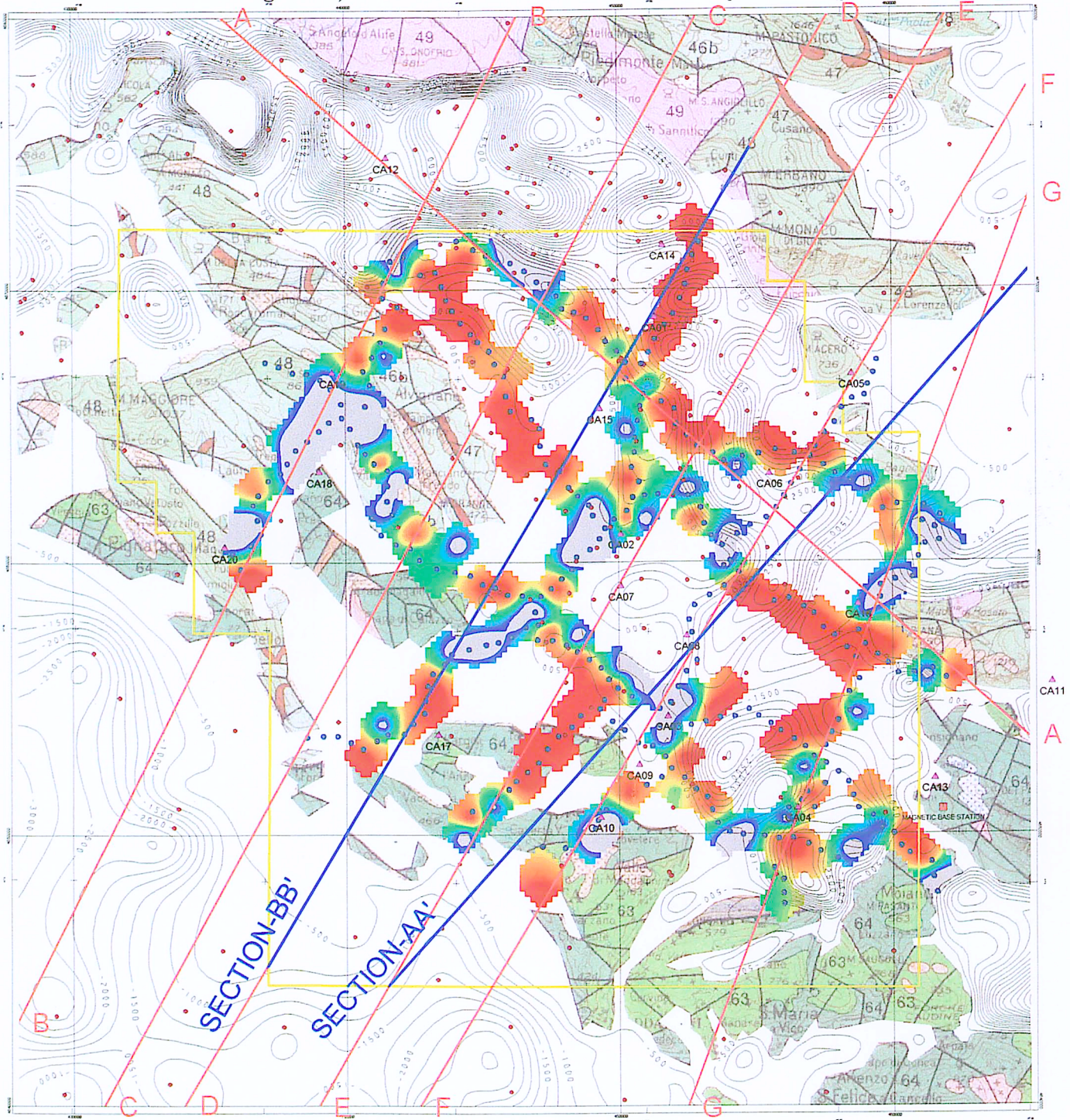
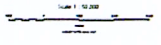


Figure 24) Gore-Sorber Petroliferous Probability Results



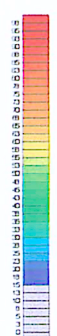
▲ CA11
A



AOA Geophysics Inc.

MAP SYMBOL LEGEND

- Gravity Station - 1999 Field Program
- Gravity Station - NIMA Open File Data
- Magnetic Station - 1999 Field Program
- Mag Base Station - 1999 Field Program
- ▲ MT Site - 1999 Field Program



Percent Probability (Goro Model 2.1)
Probability of Geochemical Similarity To Marzù Taurino-1 Soil Gas Samples



FOREST OIL INTERNATIONAL

CASERTA BLOCK
Central Apennines - Southern Italy
Gore-Sorber Results & General Depth To Carbonate

AOA Geophysics Inc. - Houston Division
11,000 Westheimer 5th Floor
Houston, Texas 77042 USA
TEL/FAX: 713-512-2624/6572 E-MAIL: GAOA@Geophysics.com

Robert Pawlowski - 05/2000