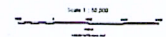
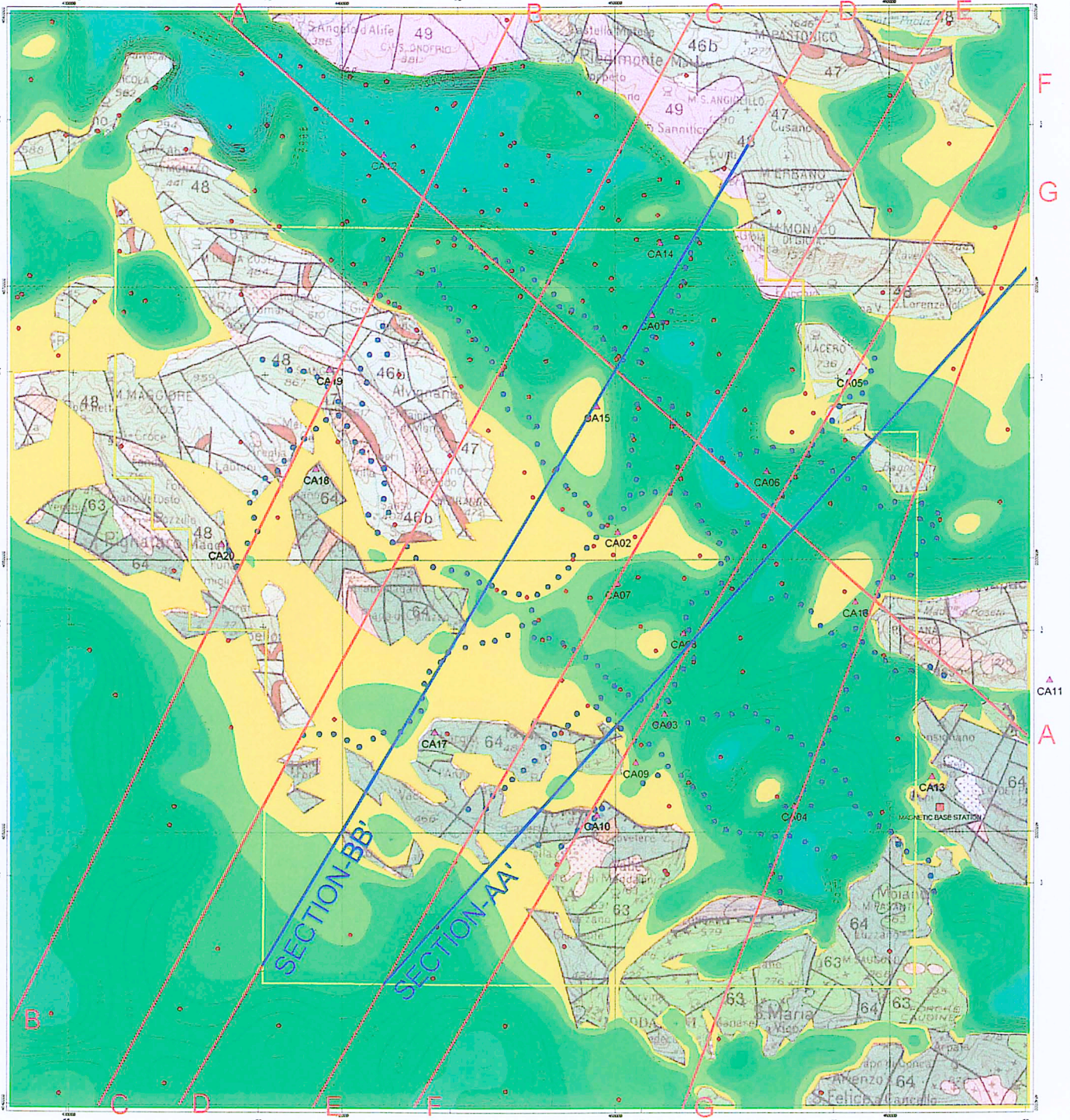


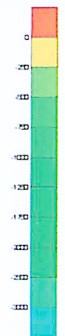
Figure 14) 3-D Gravity Model Estimation of Depth to Carbonate (m subsea)



AOA Geophysics Inc.

MAP SYMBOL LEGEND

- Gravity Station - 1999 Field Program
- Gravity Station - NIMA Open File Data
- Magnetic Station - 1999 Field Program
- Mag Base Station - 1999 Field Program
- ▲ MT Site - 1999 Field Program



Depth-To-Carbonate (meters subsea)
Isostatic Gravity Modeling (0.25 g/cm³ Contrast)



FOREST OIL INTERNATIONAL

CASERTA BLOCK
Central Apennines - Southern Italy
Depth-To-Carbonate (Subsea) - C.I. = 250 m

AOA Geophysics Inc. - Houston Division
11200 Westheimer 5th Floor
Houston, Texas 77042 USA
TEL/FAX: 713-532-3024/6572 INF: 610-640-6400

Robert Pawlowski - 05/2000