

997-11-69

AGIP

OFFSHORE ITALIA
ZONA F

SW 1600 LINEA F.76.72D NE 1071

1 km

DIGITAL PROCESSING P5
TIME ORIGIN: Source and cable depth
STACK 4800
Boat motion
528 Date: MAY 7 '76 Checked R/S

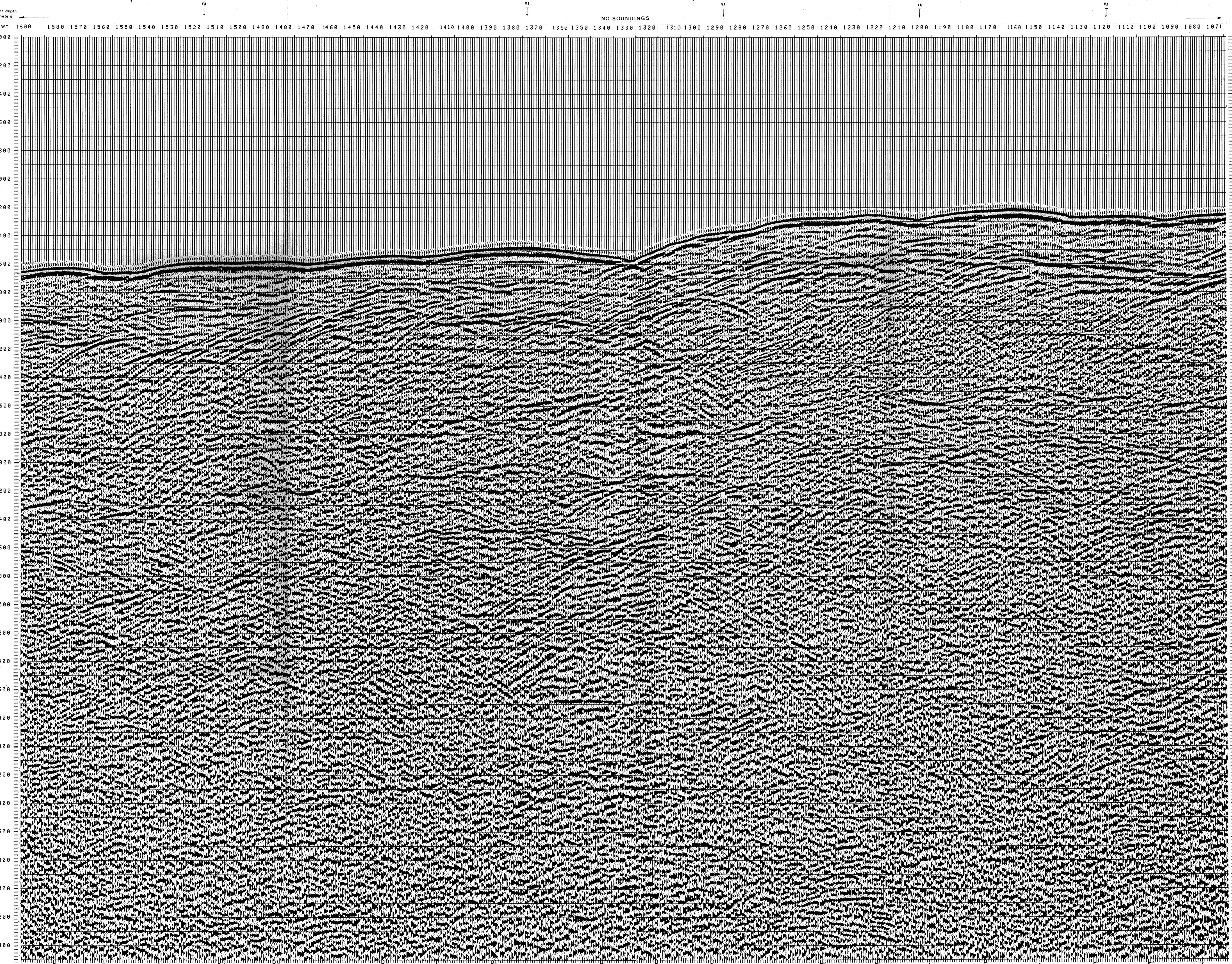
PROCESSING (SAMPLING RATE 4 m)
1. AMPLITUDE RECOVERY
2. WAPCO stabilization by vaporchoc signal
3. MDTING
4. DECONVOLUTION 240 ms
5. VELOCITY ANALYSIS (VA)
6. ANO CORRECTIONS
7. STACK 4800 %
8. TIME VARIANT FILTER (Origin sea bottom)
9. TRACE EQUALIZATION
10. ANALOG DISPLAY

FIELD RECORDING (SAMPLING RATE 4 m)
Ship: POLAR BJORN Shooting date: FEB/1976
Field recorder: SN338B filter: 1/8-125
floating point sampling: 4 ms
Streamer: 2400 m (Depth 15 m)
groups: 48 (group interval: 50 m)
Geophones type: HC 201 n° 48 / group
48Fold coverage
Energy source: VAPORCHOC (Depth 5 m)
330m MOTOROLA positioning

00305

F76.072C
13

F76.141
77



TWT	FROM SP 1518*	FROM SP 1376*	FROM SP 1290*	FROM SP 1122*	FROM SP 936*	VARIABLE FILTER
	TO SP 1600*	TO SP 1376*	TO SP 1290*	TO SP 1216*	TO SP 936*	007 VI 65
	*****					VI
	AV. VEL. IN M/S*	AV. VEL. IN M/S*	AV. VEL. IN M/S*	AV. VEL. IN M/S*	AV. VEL. IN M/S*	Frequency in Hz
000						
200	1500	1500	1500	1500	1500	
400	1500	1500	1500	1500	1500	
600	1500	1500	1500	1500	1500	
800	1500	1500	1500	1500	1500	
1000	1500	1500	1500	1500	1500	
1200	1500	1500	1500	1500	1543	
1400	1500	1500	1508	1571	1588	
1600	1503	1535	1568	1645	1731	
1800	1527	1597	1643	1752	1872	
2000	1586	1710	1748	1877	2014	
2200	1732	1914	1867	2143	2294	
2400	2006	2088	2346	2297	2454	
2600	2266	2359	2276	2428	2589	
2800	2512	2629	2471	2539	2762	
3000	2731	2841	2653	2757	2964	
3200	2923	3025	2843	2947	3142	
3400	3092	3189	3023	3115	3298	
3600	3242	3334	3177	3254	3437	
3800	3377	3464	3315	3397	3561	
4000	3498	3580	3439	3517	3673	
4200	3608	3686	3552	3626	3774	
4400	3707	3782	3654	3725	3867	
4600	3798	3870	3747	3813	3951	
4800	3882	3950	3833	3898	4028	
5000	3958	4024	3911	3974	4098	
5200	4029	4093	3984	4044	4164	
5400	4095	4156	4051	4109	4224	
5600	4156	4214	4114	4169	4281	
5800	4212	4269	4172	4226	4333	
6000	4265	4320	4226	4278	4382	
6200	4315	4368	4277	4327	4428	
6400	4361	4413	4324	4373	4471	