

997-11-69 **AGIP**

OFFSHORE ITALIA
ZONA F

DIGITAL PROCESSING P5

TIME ORIGIN: Source and cable depth

STACK 4800%

Boat motion ←

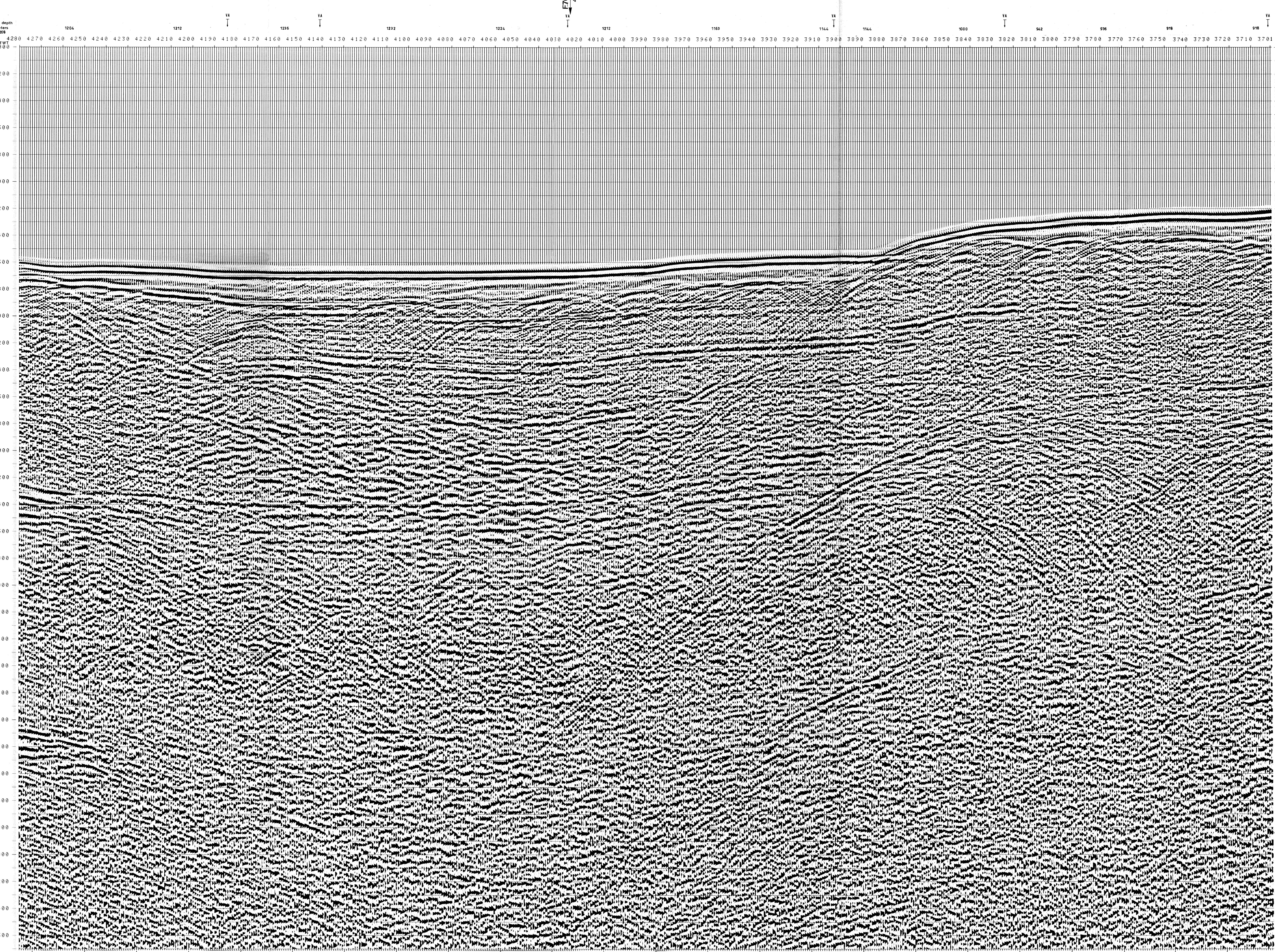
724 Date: JUNE 25 '76 Checked: *WV*

1 AMPLITUDE RECOVERY
2 WAPCS (stabilization by vaporchoc signal)
3 MUTING
4 DECONVOLUTION 240 ms
window: 500 2300 ms J. 81xw
1900 2800 ms sea bottom
5 VELOCITY ANALYSIS (VA)
6 NMO CORRECTIONS
LINEAR INTERPOLATION
BETWEEN VELOCITY FUNCTIONS

7 STACK 4800 %
8 TIME VARIANT FILTER (origin sea bottom)
9 TRACE EQUALIZATION
10 ANALOG DISPLAY

Ship POLARBJORN Shooting date: FEB/1976
Field recorder: SN338B filter: 1/8-125
floating point sampling: 4 ms
Streamer: 200 m (depth 10 m)
groups: 48 (group interval 50 m)
Geophones type HC201 n° 48 / group
48 fold coverage
Energy source: VAPORCHOC (Depth 5 m)
SP 1x1 Streamer: 1x48
332m WOTOROLA positioning

00257



TWT 000	FROM SP FROM SP FROM SP FROM SP FROM SP				TO SP TO SP TO SP TO SP TO SP				VARIABLE FILTER
	4125*	4240*	4625*	3982*	3823*	3761*	3823*	3761*	
200	1500	1500	1500	1500	1500	1500	1500	1500	III
400	1500	1500	1500	1500	1500	1500	1500	1500	III
600	1500	1500	1500	1500	1500	1500	1500	1500	III
800	1500	1500	1500	1500	1500	1500	1500	1500	III
1000	1500	1500	1500	1500	1500	1500	1500	1500	III
1200	1500	1500	1500	1500	1500	1500	1500	1500	III
1400	1500	1500	1500	1500	1500	1529	1542	1542	III
1600	1500	1500	1500	1500	1505	1629	1586	1586	III
1800	1520	1545	1524	1619	1655	1611	1611	1611	III
2000	1718	1646	1728	1675	2047	2016	2016	2016	III
2200	2028	1826	1966	2133	2243	2126	2126	2126	III
2400	2231	2122	2167	2386	2641	2497	2497	2497	III
2600	2472	2436	2460	2650	3111	2907	2907	2907	III
2800	2718	2684	2746	2921	3267	3192	3192	3192	III
3000	2937	2888	3059	3167	3489	3419	3419	3419	III
3200	3166	3120	3261	3381	3864	3618	3618	3618	III
3400	3368	3325	3476	3570	3855	3794	3794	3794	III
3600	3546	3507	3649	3739	4008	3949	3949	3949	III
3800	3708	3676	3805	3889	4144	4089	4089	4089	III
4000	3853	3816	3944	4025	4267	4214	4214	4214	III
4200	3984	3949	4071	4147	4378	4328	4328	4328	III
4400	4103	4069	4188	4259	4479	4432	4432	4432	III
4600	4211	4179	4291	4361	4571	4526	4526	4526	III
4800	4311	4288	4387	4454	4656	4612	4612	4612	III
5000	4442	4373	4475	4546	4733	4691	4691	4691	III
5200	4487	4459	4557	4619	4805	4765	4765	4765	III
5400	4565	4536	4633	4692	4872	4833	4833	4833	III
5600	4638	4611	4703	4760	4933	4896	4896	4896	III
5800	4705	4680	4768	4824	4991	4955	4955	4955	III
6000	4768	4744	4825	4883	5044	5009	5009	5009	III
6200	4827	4804	4887	4938	5095	5061	5061	5061	III
6400	4883	4860	4946	4990	5142	5109	5109	5109	III
6600	4935	4913	4990	5039	5186	5154	5154	5154	III