

917-11.69 **AGIP**

OFFSHORE ITALIA
ZONA F

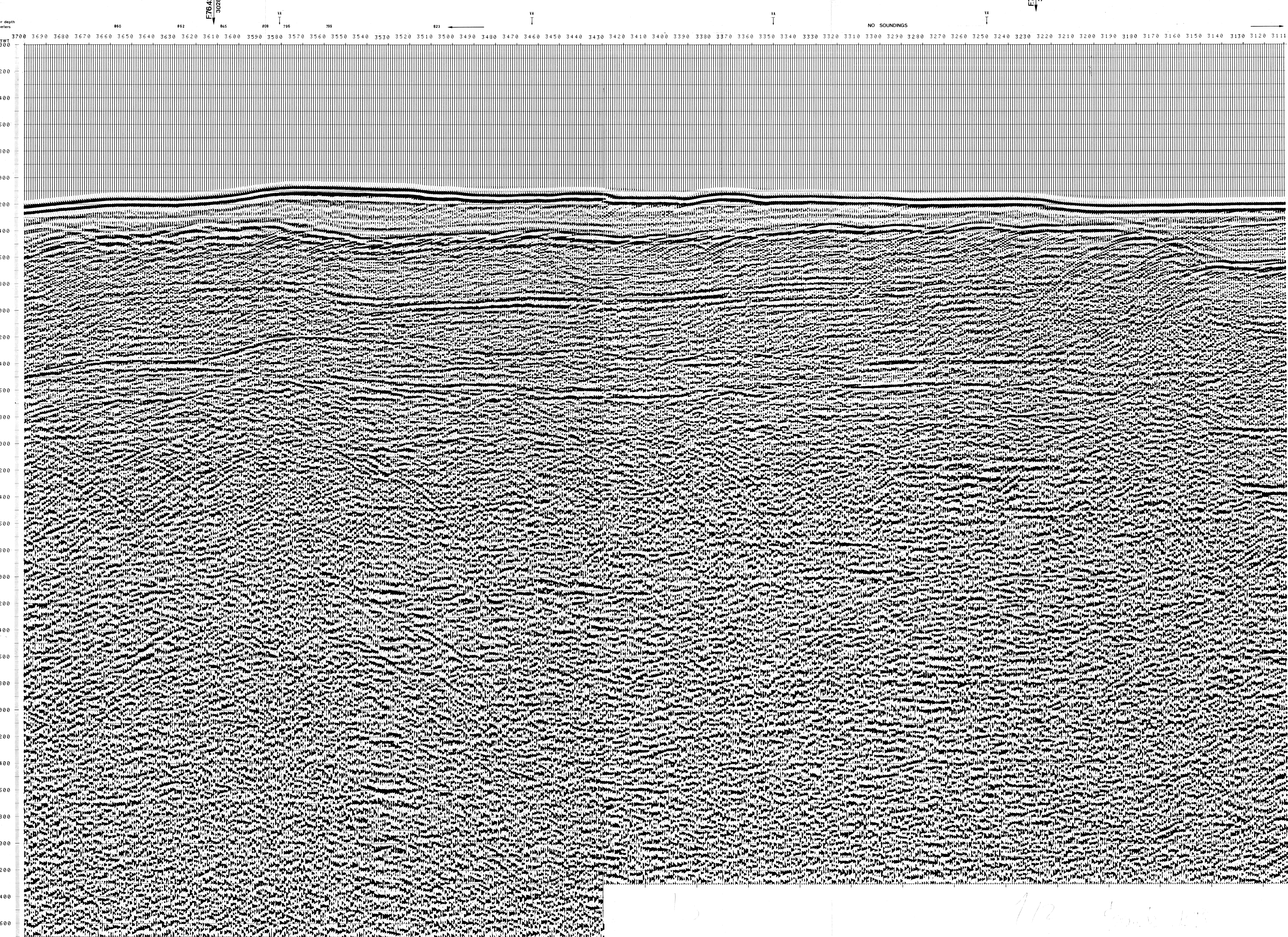
SW 3700 LINEA F.76.57 NE 3111

1 km

COMPAGNIE GENERALE DE GEOPHYSIQUE

DIGITAL PROCESSING P5	PROCESSING SAMPLING RATE 4 MS	FIELD RECORDING SAMPLING RATE 4 MS
TIME ORIGIN: Source and cable depth	1 AMPLITUDE RECOVERY	Ship POLAR BJORN Shooting date: FEB 1976
STACK 4800	2 WAFD stabilization by wazero: digital	Field recorder: SN338B filter: 1/8-125
Boat motion	3 MUTING	floating point sampling: 4 ms
	4 DECONVOLUTION 240 ms	Streamer: 2400 m (depth 19 m)
	5 VELOCITY ANALYSIS (VA)	groups: 48 (group interval: 50 m)
	6 RMS CORRECTIONS	Geophones type: HC 201 n°: 48 / group
	7 STALK 4800 %	48Fold coverage
	8 TIME VARIANT FILTER (origin sea bottom)	Energy source: VAPORCHOC (Depth 5 m)
	9 TRACE EQUALIZATION	SP tr: 1 Streamer tr: 48
	10 ANALOG DISPLAY	332" MOTOROLA positioning
723 Date: JUNE 25 '76 Checked		

00256



TWT 000	3625*	3701*	3575*	3462*	3345*	3245*	3141*	3051*
TO SP*	TO SP*	TO SP*	TO SP*	TO SP*	TO SP*	TO SP*	TO SP*	TO SP*
3825*	3741*	3575*	3462*	3345*	3245*	3141*	3051*	3051*
AV. VEL. IN M/S*	AV. VEL. IN M/S*	AV. VEL. IN M/S*	AV. VEL. IN M/S*	AV. VEL. IN M/S*	AV. VEL. IN M/S*	AV. VEL. IN M/S*	AV. VEL. IN M/S*	AV. VEL. IN M/S*
200	1500	1500	1500	1500	1500	1500	1500	1500
400	1500	1500	1500	1500	1500	1500	1500	1500
600	1500	1500	1500	1500	1500	1500	1500	1500
800	1500	1500	1500	1500	1500	1500	1500	1500
1000	1500	1500	1500	1500	1500	1500	1500	1500
1200	1500	1500	1518	1514	1525	1500	1500	1500
1400	1529	1542	1592	1561	1699	1538	1546	1563
1600	1629	1586	1837	1793	1782	1620	1620	1620
1800	1855	1811	2054	1958	1917	1797	1775	1864
2000	2167	2011	2244	2130	2120	1984	1937	2096
2200	2483	2120	2395	2433	2507	2183	2319	2239
2400	2841	2497	2696	2716	2813	2575	2646	2506
2600	3111	2907	2948	2971	3069	2971	2971	2999
2800	3267	3192	3203	3230	3321	3230	3230	3257
3000	3489	3415	3429	3454	3539	3454	3454	3475
3200	3684	3616	3628	3651	3731	3651	3651	3674
3400	3855	3754	3812	3824	3899	3824	3824	3847
3600	4008	3945	3956	3975	4049	3975	3975	3999
3800	4144	4089	4097	4117	4184	4117	4117	4136
4000	4267	4214	4220	4241	4304	4241	4241	4259
4200	4376	4326	4335	4353	4414	4353	4353	4371
4400	4479	4431	4438	4455	4513	4455	4455	4472
4600	4571	4521	4532	4546	4604	4546	4546	4565
4800	4656	4612	4618	4634	4687	4634	4634	4649
5000	4733	4691	4697	4712	4763	4712	4712	4727
5200	4805	4765	4771	4785	4834	4785	4785	4799
5400	4872	4833	4838	4852	4899	4852	4852	4866
5600	4933	4896	4901	4915	4960	4915	4915	4928
5800	4991	4955	4960	4973	5017	4973	4973	4986
6000	5044	5009	5014	5027	5065	5027	5027	5039
6200	5095	5061	5066	5078	5119	5078	5078	5090
6400	5142	5109	5114	5125	5165	5125	5125	5137
6600	5186	5154	5159	5170	5205	5170	5170	5181

VARIABLE FILTER

III

Frequency in Hz

0 20 40 60 80 100