

997-11-69

AGIP

OFFSHORE ITALIA
ZONA F

S W N E
1025 LINEA F-76-55 1494

1 km



DIGITAL PROCESSING P5
TIME ORIGIN: Source and cable depth
STACK 4800 %
Boat motion
705 Date: JUNE 22 '76 Checked: TW

PROCESSING SAMPLING RATE 4 ms
1 AMPLITUDE RECOVERY
2 WAPCO stabilization by vapochoc signal
3 MUTING
4 DECONVOLUTION 240 ms
5 VELOCITY ANALYSIS (VA)
6 RMS CORRECTIONS

7 STACK 4800 %
8 TIME VARIANT FILTER (origin sea bottom)
9 TRACE EQUALIZATION
10 ANALOG DISPLAY

FIELD RECORDING SAMPLING RATE 4 ms
Ship: POLAR BJORN Shooting date: FEB/1976
Field recorder: SN338B filter: 1/8-125
floating point sampling: 4 ms
Streamer: 2400 m (Depth 10 m)
groups: 48 (group interval: 50 m)
Geophones type: HC 201 n° 48 / group
48 fold coverage
Energy source: VAPORCHOC (Depth 5 m)
332m Streamer
MOTOROLA positioning

00243

F7646
862

F7642C
3412

PERCH SP*PROV CD*PRCH CD*FROM CD*FROM CD
1 1764 1764 1764 1764 1764 1764
TO SF * TO SF * TO SF * TO SF * TO SF * TO SF *
1025 1025 1025 1025 1025 1025
*AV*VEL*AV*VEL*AV*VEL*AV*VEL*AV*VEL*AV*VEL*
IN P/S* IN P/S* IN P/S* IN P/S* IN P/S* IN P/S*

VARIABLE FILTER
III
Frequency in Hz
13.5 60

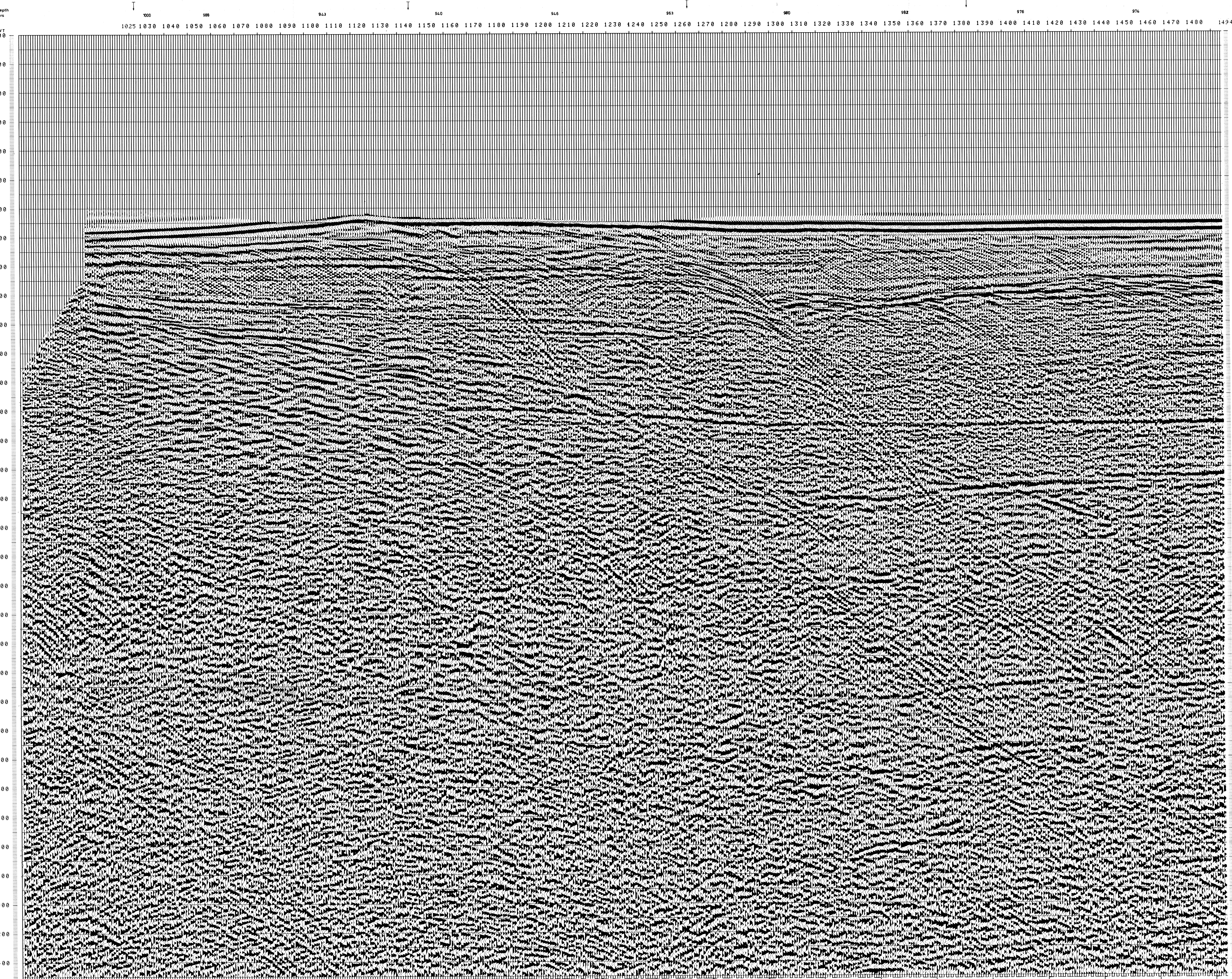


Table with 6 columns of numerical data corresponding to the seismic traces. The data values range from approximately 1500 to 5000 across the columns.