

997-11-69 **AGIP**

OFFSHORE ITALIA
ZONA F

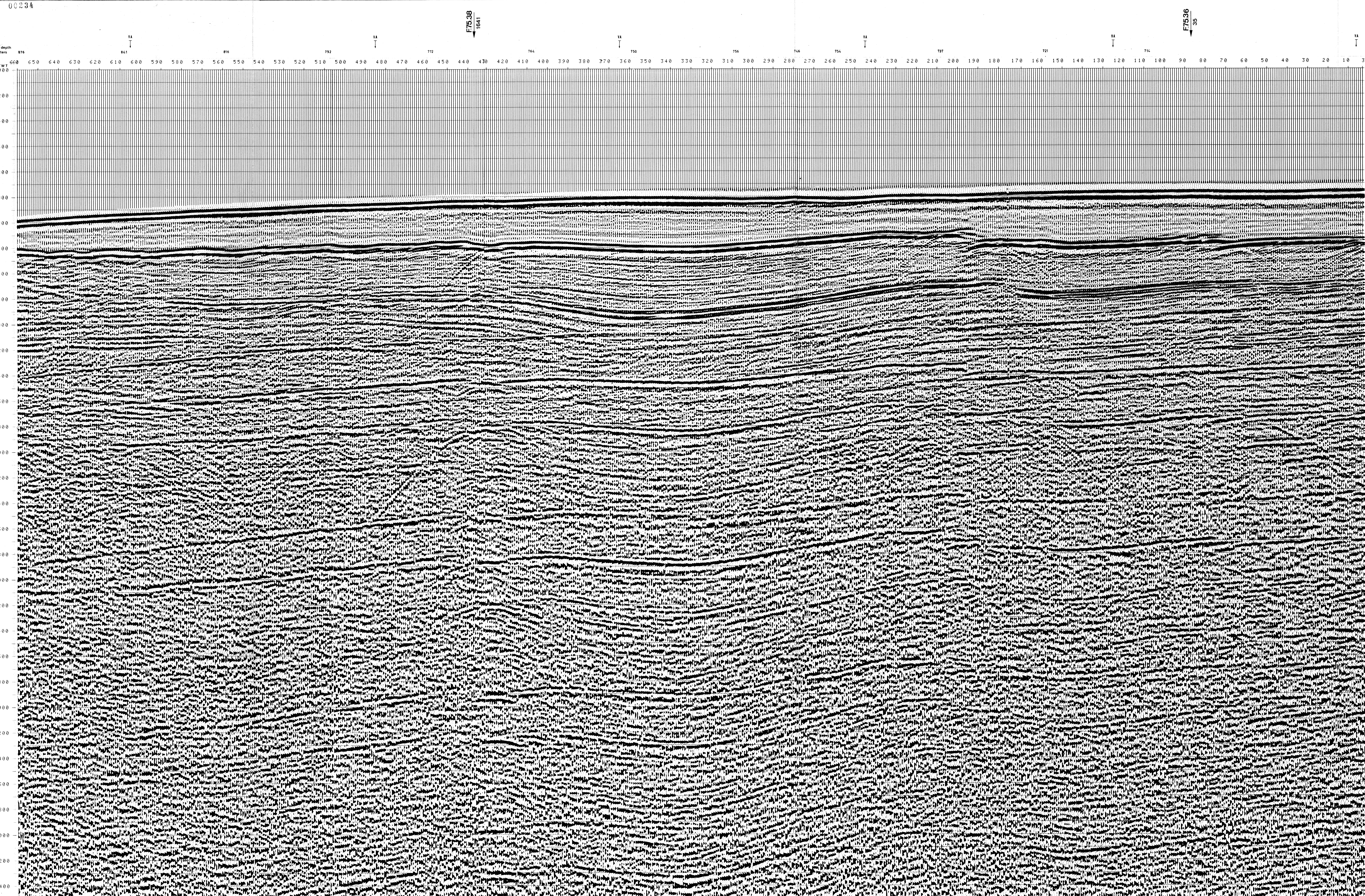
SW 660 LINEA F.76-53 NE 3

1 km

COMPAGNIE GENERALE DE GEOPHYSIQUE

725 Date: JUNE 25, 76 Checked: *[initials]*

PROCESSING SAMPLING RATE 4ms		FIELD RECORDING SAMPLING RATE 4ms	
DIGITAL PROCESSING P5		Ship POLAR BJORN Shooting date: FEB/1976	
TIME ORIGIN: Source and cable depth		Field recorder SN3388 filter 1/8-125	
STACK 4800%		floating point sampling 4 ms	
1 AMPLITUDE RECOVERY		Streamer 2400 m (depth 10 m)	
2 WARP stabilization by seismic signal		Groups 48 (group interval 50 m)	
3 MUTING		Geophones type: HC 201 n° 48 / group	
4 DECONVOLUTEN 240 ms		48Fold coverage	
5 VELOCITY ANALYSIS (VA)		Energy source VAPORCHOC (depth 5 m)	
6 NMO CORRECTIONS		SP 12.1 Streamer 1248	
7 STACK 4800%		332m DOPPLER positioning	
8 TIME VARIANT FILTER (origin sea bottom)			
9 TRACE EQUALIZATION			
10 ANALOG DISPLAY			



TWT 000	SP*FROM SP*FROM SP*FROM SP*FROM SP*FROM SP*FROM SP*FROM SP*FROM SP*								VARIABLE FILTER
	724*	604*	484*	364*	244*	124*	1*	1*	
	TO SP	TO SP	TO SP	TO SP	TO SP	TO SP	TO SP	TO SP	III
	724*	604*	484*	364*	244*	124*	1*	1*	997-11-69
	IN M/S* IN M/S* IN M/S* IN M/S* IN M/S* IN M/S* IN M/S* IN M/S*								Frequency in Hz
	2	3	3	3	3	3	3	3	00
000									
200	1500	1500	1500	1500	1500	1500	1500	1500	
400	1500	1500	1500	1500	1500	1500	1500	1500	
600	1500	1500	1500	1500	1500	1500	1500	1500	
800	1500	1500	1500	1500	1500	1500	1500	1500	
1000	1500	1500	1500	1500	1500	1500	1525	1513	
1200	1500	1534	1585	1570	1508	1671	1600	1600	
1400	1513	1549	1690	1629	1711	1730	1700	1700	
1600	1603	1632	1634	1786	1828	1823	1818	1818	
1800	1689	1887	2013	1932	1973	2002	1956	1956	
2000	1781	2120	2177	2099	2241	2292	2278	2278	
2200	1908	2386	2344	2271	2480	2550	2667	2667	
2400	2266	2659	2608	2804	2722	2887	3235	3235	
2600	2619	2966	2856	3173	3107	3173	3494	3494	
2800	2960	3224	3110	3417	3353	3417	3716	3716	
3000	3209	3449	3343	3629	3560	3629	3908	3908	
3200	3421	3646	3546	3815	3750	3815	4076	4076	
3400	3608	3820	3726	3979	3926	3979	4224	4224	
3600	3774	3974	3885	4124	4074	4124	4356	4356	
3800	3923	4113	4028	4255	4207	4255	4474	4474	
4000	4057	4237	4157	4372	4327	4372	4581	4581	
4200	4178	4349	4273	4478	4435	4478	4677	4677	
4400	4288	4452	4379	4574	4534	4574	4764	4764	
4600	4389	4545	4475	4663	4623	4663	4844	4844	
4800	4481	4631	4564	4741	4706	4741	4917	4917	
5000	4565	4708	4648	4817	4781	4817	4984	4984	
5200	4644	4782	4723	4886	4851	4886	5047	5047	
5400	4716	4849	4790	4949	4916	4949	5104	5104	
5600	4783	4912	4855	5008	4976	5008	5158	5158	
5800	4846	4970	4915	5063	5032	5063	5207	5207	
6000	4904	5024	4971	5114	5084	5114	5254	5254	
6200	4959	5075	5024	5162	5133	5162	5297	5297	
6400	5010	5123	5072	5207	5179	5207	5338	5338	