

997-11-69

AGIP

OFFSHORE ITALIA
ZONA F

NW 1341 SE 2064

LINEA F-76-46

1 km

COMPAGNIE GÉNÉRALES D'EXPLOITATION

DIGITAL PROCESSING P5

TIMEORIGIN: Source and cable depth

STACK 4800%

Boat motion

574 Date: MAY 21-76 Checked: *MB*

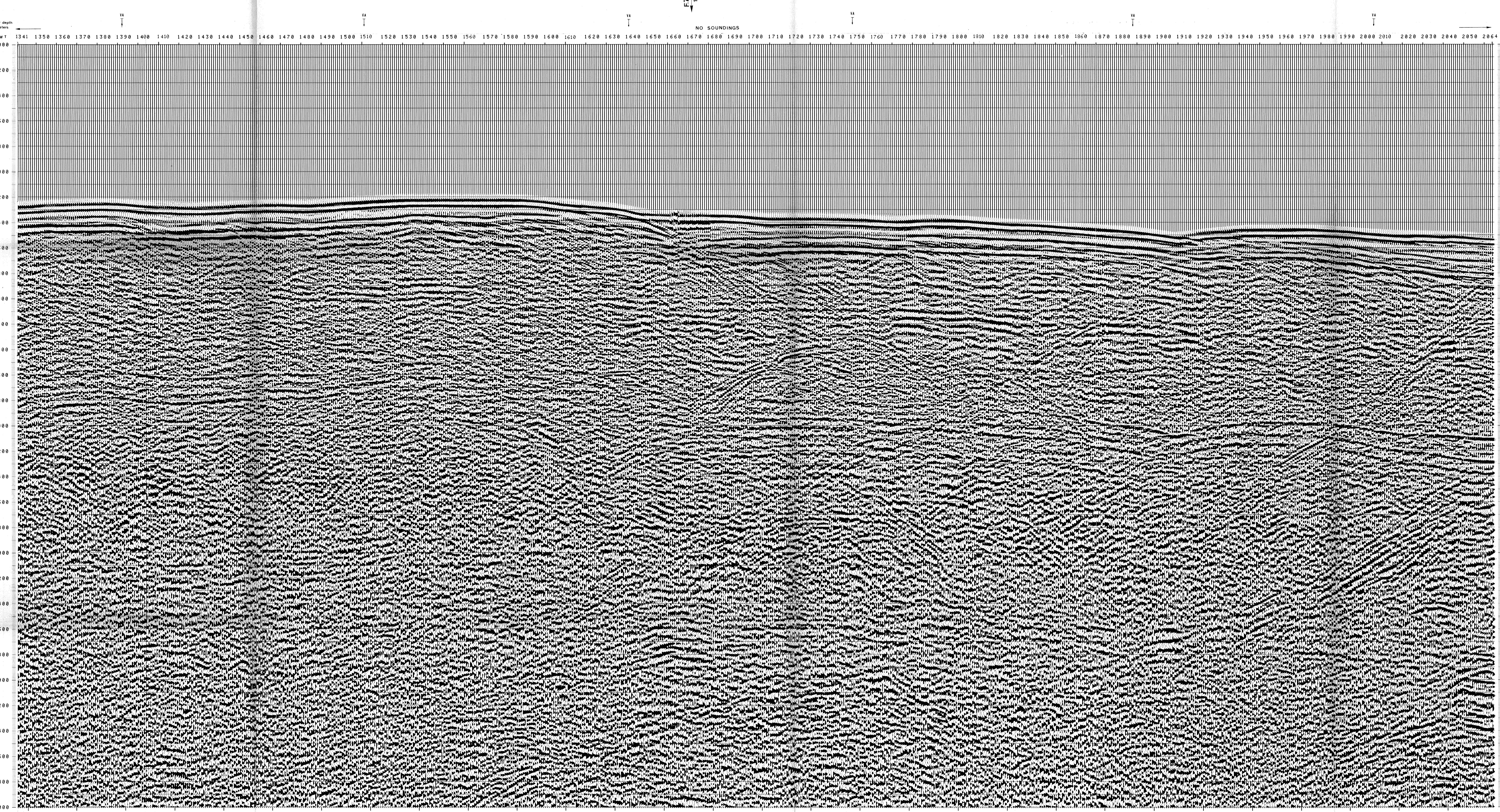
PROCESSING SAMPLING RATE 4000

1 AMPLITUDE RECOVERY
2 WAFD (stabilization by WAFDREQ signal)
3 NOISE
4 DECONVOLUTION 240 m
5 VELOCITY ANALYSIS 1%
6 KMO CORRECTIONS
LINEAR INTERPOLATION BETWEEN VELOCITY FUNCTIONS

7 STACK 4800 %
8 TIME VARIANT FILTER (Origin sea bottom)
9 TRACE EQUALIZATION
10 ANALOG DISPLAY

Ship: POLAR BJORN Shooting date: FEB 1976
Field recorder: SN3388 Filter: 108-125
floating point sampling: 4 ms
Streamer: 2400 m (Depth 15 m)
groups: 48 (group interval: 50 m)
Geophones type: HC 201 n° 48 / group
48Fold coverage
Energy source: VAPORCHOC (Depth 5 m)
SP 1r 1 Streamer 1r 48
332% SHORAN positioning

00220



| TWT | 1276* | 1391* | 1510* | 1640* | 1750* | 1867* | 2005* |
|------|---------|---------|---------|---------|---------|---------|---------|
| | TO SP | TO SP | TO SP | TO SP | TO SP | TO SP | TO SP |
| | 1276* | 1391* | 1510* | 1640* | 1750* | 1867* | 2005* |
| | AV-VEL* | AV-VEL* | AV-VEL* | AV-VEL* | AV-VEL* | AV-VEL* | AV-VEL* |
| | IN M/S* | IN M/S* | IN M/S* | IN M/S* | IN M/S* | IN M/S* | IN M/S* |
| 800 | . | . | . | . | . | . | . |
| 1000 | . | . | . | . | . | . | . |
| 1200 | 1500 | 1500 | 1500 | 1500 | 1500 | 1500 | 1500 |
| 1400 | 1500 | 1500 | 1500 | 1500 | 1500 | 1500 | 1500 |
| 1600 | 1500 | 1500 | 1500 | 1500 | 1500 | 1500 | 1500 |
| 1800 | 1500 | 1500 | 1500 | 1500 | 1500 | 1500 | 1500 |
| 2000 | 1500 | 1500 | 1500 | 1500 | 1500 | 1500 | 1500 |
| 2200 | 1500 | 1500 | 1500 | 1500 | 1500 | 1500 | 1500 |
| 2400 | 1500 | 1500 | 1500 | 1500 | 1500 | 1500 | 1500 |
| 2600 | 1500 | 1500 | 1500 | 1500 | 1500 | 1500 | 1500 |
| 2800 | 1500 | 1500 | 1500 | 1500 | 1500 | 1500 | 1500 |
| 3000 | 1500 | 1500 | 1500 | 1500 | 1500 | 1500 | 1500 |
| 3200 | 1500 | 1500 | 1500 | 1500 | 1500 | 1500 | 1500 |
| 3400 | 1500 | 1500 | 1500 | 1500 | 1500 | 1500 | 1500 |
| 3600 | 1500 | 1500 | 1500 | 1500 | 1500 | 1500 | 1500 |
| 3800 | 1500 | 1500 | 1500 | 1500 | 1500 | 1500 | 1500 |
| 4000 | 1500 | 1500 | 1500 | 1500 | 1500 | 1500 | 1500 |
| 4200 | 1500 | 1500 | 1500 | 1500 | 1500 | 1500 | 1500 |
| 4400 | 1500 | 1500 | 1500 | 1500 | 1500 | 1500 | 1500 |
| 4600 | 1500 | 1500 | 1500 | 1500 | 1500 | 1500 | 1500 |
| 4800 | 1500 | 1500 | 1500 | 1500 | 1500 | 1500 | 1500 |
| 5000 | 1500 | 1500 | 1500 | 1500 | 1500 | 1500 | 1500 |
| 5200 | 1500 | 1500 | 1500 | 1500 | 1500 | 1500 | 1500 |
| 5400 | 1500 | 1500 | 1500 | 1500 | 1500 | 1500 | 1500 |
| 5600 | 1500 | 1500 | 1500 | 1500 | 1500 | 1500 | 1500 |
| 5800 | 1500 | 1500 | 1500 | 1500 | 1500 | 1500 | 1500 |
| 6000 | 1500 | 1500 | 1500 | 1500 | 1500 | 1500 | 1500 |

VARIABLE FILTER

III

Frequency in Hz

130 60