

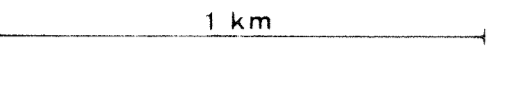
- 1 AMPLITUDE RECOVERY
- 2 WAPCO stabilization by vaporizer signal
- 3 MUTING
- 4 DECONVOLUTION 240 ms
window: 300 2300 ms J below
1900 3600 ms I below
- 5 VELOCITY ANALYSIS (VA)
LINEAR INTERPOLATION
BETWEEN VELOCITY FUNCTIONS
- 6 NMO CORRECTIONS

- 7 STACK 4800%
- 8 TIME VARIANT FILTER (Origin sea bottom)
- 9 TRACE EQUALIZATION
- 10 ANALOG DISPLAY

FIELD RECORDING
SAMPLING RATE 4.71

Ship GLORITA TIDE Shooting date: JAN 1976
Field recorder SN 338 filter VB 125
Floating point sampling 4 ms
Streamer 2400 m (depth 19 m)
groups 48 (group interval 50 m)
Geophones type HC 201 nr 48 / group
48Fold coverage
Energy source VAPORCHOC (depth 19 m)
SP 111 Streamer 148
310m SHORAN positioning

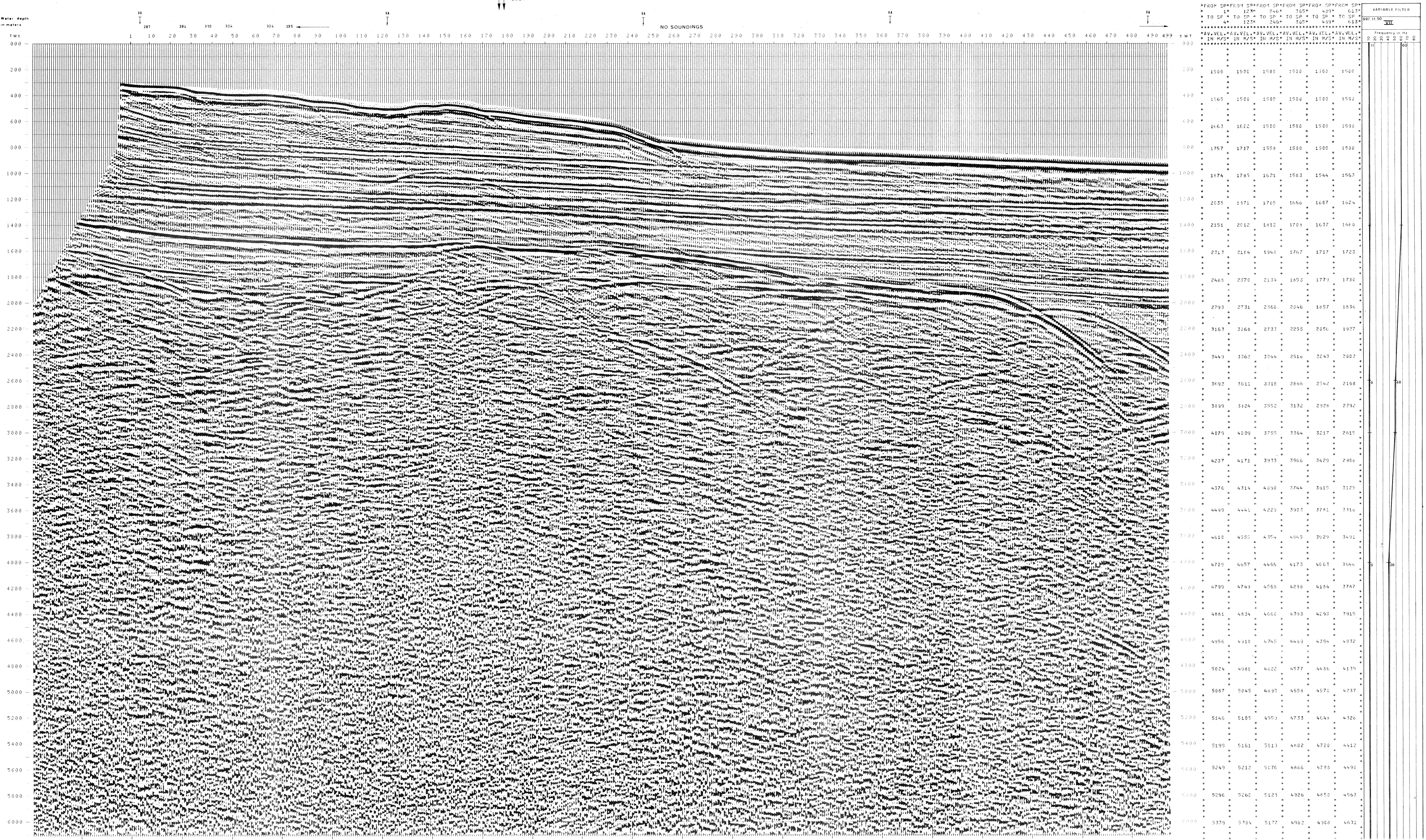
SW 1 LINEA F-76-39 NE 499



COMPAGNIE GENERALE
DE GÉOPHYSIQUE

00181

F75-16 1204
F76-16 3202



FROM SP	FROM SP	FROM SP	FROM SP	FROM SP	FROM SP
1	123	246	369	492	615
TO SP	TO SP	TO SP	TO SP	TO SP	TO SP
4	123	246	369	492	615
AV. VEL.	AV. VEL.	AV. VEL.	AV. VEL.	AV. VEL.	AV. VEL.
IN M/S	IN M/S	IN M/S	IN M/S	IN M/S	IN M/S
1500	1500	1500	1500	1500	1500
1565	1500	1500	1500	1500	1500
1663	1622	1500	1500	1500	1500
1757	1717	1558	1500	1500	1500
1874	1785	1621	1583	1544	1553
2035	1871	1705	1666	1607	1624
2151	2012	1812	1703	1637	1660
2313	2144	1940	1767	1717	1723
2465	2370	2134	1853	1773	1730
2793	2731	2366	2046	1857	1836
3163	3368	2733	2255	2056	1927
3443	3362	3044	2510	2243	2002
3692	3611	3318	2866	2542	2168
3899	3824	3552	3132	2928	2292
4079	4009	3755	3364	3217	2615
4237	4171	3933	3566	3429	2906
4376	4314	4090	3744	3615	3125
4499	4441	4229	3903	3781	3310
4610	4555	4354	4045	3929	3491
4709	4657	4466	4173	4061	3646
4799	4749	4568	4288	4184	3747
4881	4834	4660	4393	4293	3915
4956	4910	4745	4493	4394	4032
5024	4981	4822	4577	4486	4139
5087	5045	4893	4659	4570	4237
5146	5105	4953	4733	4648	4326
5199	5161	5013	4802	4720	4412
5249	5212	5070	4866	4783	4490
5296	5260	5123	4926	4850	4563
5339	5304	5177	4982	4908	4631

VARIABLE FILTER
997-11-50 VII

Frequency in Hz
0 5 10 20 30 40 50 60