

OFFSHORE ITALIA
ZONA F

DIGITAL PROCESSING P5

TIME ORIGIN: Source and cable depth

STACK 4800%

Boat motion

579 Date: MAY 31 1976 Checked: *RM*

1. AMPLITUDE RECOVERY

2. WAP (Distabilization by waprochoc signal)

3. MFTING

4. DECONVOLUTION 240 Hz

5. VELOCITY ANALYSIS (Vx)

6. AMD CORRECTIONS

7. STACK 4800%

8. TIME VARIANT FILTER (Origin sea bottom)

9. TRACE EQUALIZATION

10. ANALOG DISPLAY

FIELD RECORDING
SAMPLING RATE 4%

Ship GLORITA TIDE Shooting date: JAN 1976

Field recorder SN 338 Filter V8125

Floating point sampling 4 m

Streamer 2400 m (Depth 10 m)

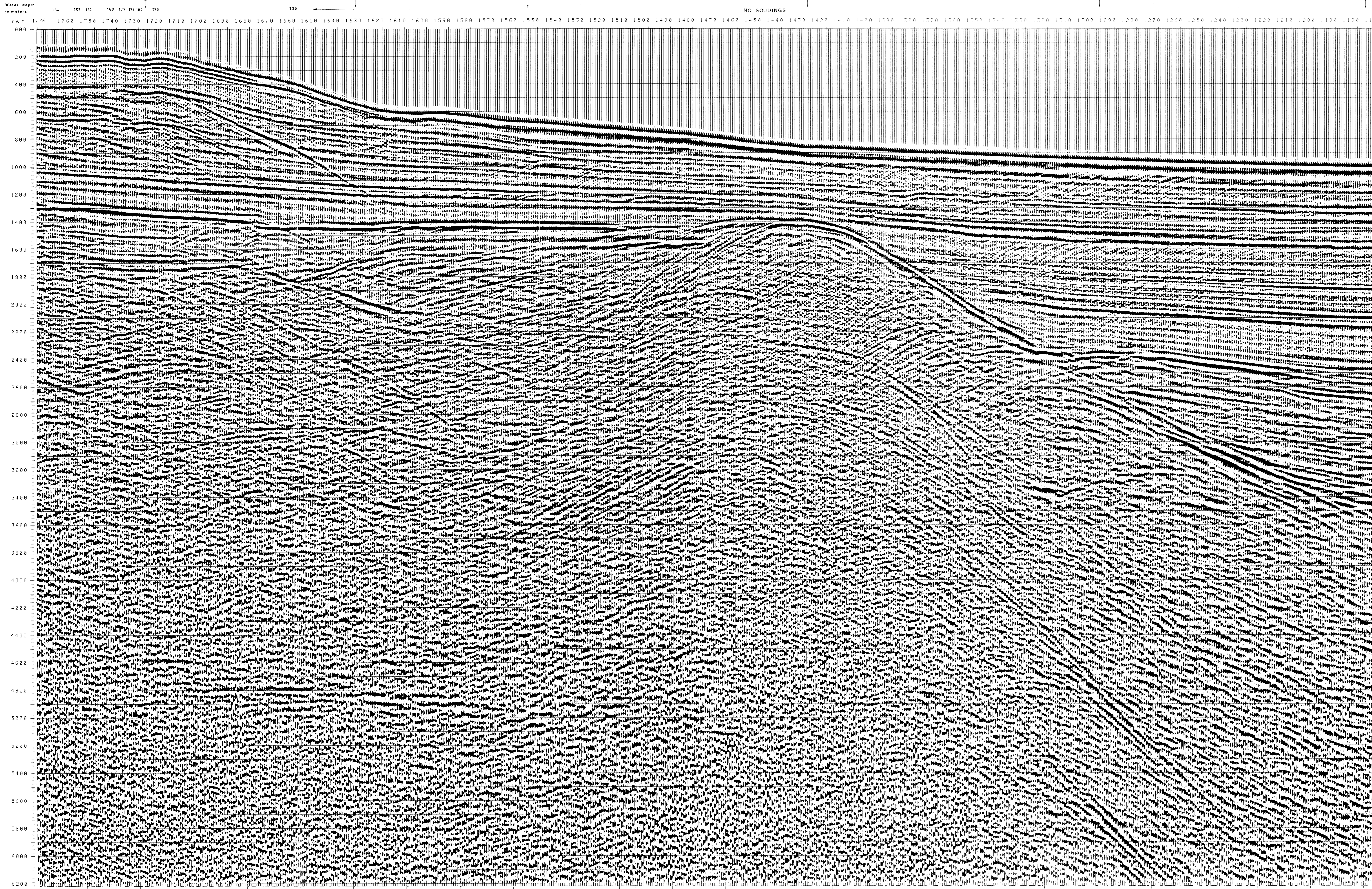
Geophones type HC 201 m 48/group

48Fold coverage

Energy source VAPORCHOC (page 8)

SP 111 Streamer 1148

342m SHORAN positioning



F76.14
1307

TWT	*FROM SP*FROM SP*FROM SP*FROM SP*FROM SP*FROM SP*FROM SP*FROM SP*								VARIABLE FILTER
	1724*	1631*	1503*	1427*	1295*	1175*	1015*	845*	
	TO SP*	TO SP*	TO SP*	TO SP*	TO SP*	TO SP*	TO SP*	TO SP*	
	1771*	1462*	1153*	842*	427*	116*	116*	116*	III
	AV.VEL.*	AV.VEL.*	AV.VEL.*	AV.VEL.*	AV.VEL.*	AV.VEL.*	AV.VEL.*	AV.VEL.*	
	IN M/S*	IN M/S*	IN M/S*	IN M/S*	IN M/S*	IN M/S*	IN M/S*	IN M/S*	
000									
200	1566	1566	1566	1566	1566	1566	1566	1566	
400	1566	1566	1566	1566	1566	1566	1566	1566	
600	1655	1534	1566	1566	1566	1566	1566	1566	
800	1775	1632	1571	1566	1566	1566	1566	1566	
1000	1866	1745	1656	1567	1533	1566	1566	1566	
1200	2045	1964	1744	1656	1603	1581	1662	1662	
1400	2174	2046	1821	1761	1652	1624	1667	1667	
1600	2316	2196	2021	1876	1752	1663	1693	1693	
1800	2511	2486	2256	1976	1862	1717	1712	1712	
2000	2739	2782	2536	2072	1966	1806	1771	1771	
2200	2942	2866	2746	2194	1968	1912	1862	1862	
2400	3146	3169	2956	2395	2102	2003	1976	1976	
2600	3366	3433	3226	2749	2234	2089	2061	2061	
2800	3745	3659	3461	2996	2347	2184	2166	2166	
3000	3917	3855	3676	3236	2607	2276	2218	2218	
3200	4065	4027	3856	3446	2854	2366	2261	2261	
3400	4233	4176	4015	3632	3077	2482	2366	2366	
3600	4364	4333	4159	3797	3272	2727	2457	2457	
3800	4482	4433	4267	3944	3447	2946	2795	2795	
4000	4566	4544	4403	4077	3605	3131	2992	2992	
4200	4683	4635	4507	4157	3746	3296	3151	3151	
4400	4772	4728	4602	4306	3877	3440	3254	3254	
4600	4856	4811	4689	4416	3996	3563	3425	3425	
4800	4923	4884	4769	4497	4104	3709	3544	3544	
5000	4996	4952	4842	4561	4204	3824	3651	3651	
5200	5052	5116	4916	4659	4296	3931	3756	3756	
5400	5189	5275	4971	4781	4381	4086	3858	3858	
5600	5162	5129	5031	4798	4461	4121	3938	3938	
5800	5212	5181	5084	4816	4534	4207	4015	4015	
6000	5256	5127	5139	4816	4603	4267	4059	4059	
6200	5362	5272	5262	4972	4666	4362	4161	4161	