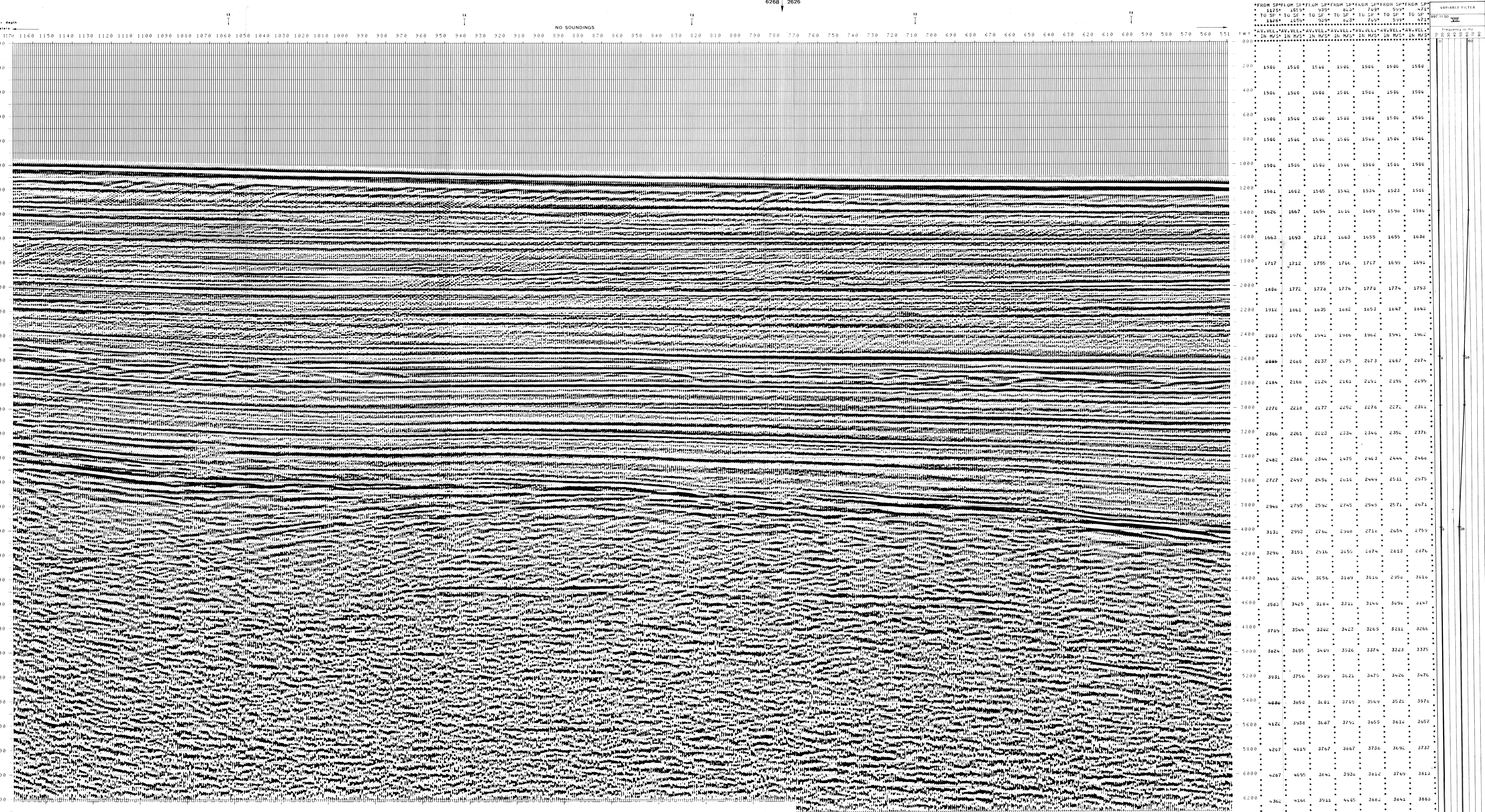


997-11-50	AGIP		PROCESSING SAMPLING RATE 4 ms	FIELD RECORDING SAMPLING RATE 4 ms
OFFSHORE ITALIA ZONA F		DIGITAL PROCESSING P5	1 AMPLITUDE RECOVERY	7 STAY 4800 %
SW 1170	LINEA F.76-37	TIME ORIGIN: Source and cable depth	2 WAPD stabilization by vaporchoc signal	8 TIME VARIANT FILTER (Origin sea bottom)
NE 551		STACK 4800 %	3 MUTING	9 TRACE EQUALIZATION
1 km		Boat motion	4 DECONVOLUTION 240 ms WIRELINE: 500 2300 ms J. Delay 1900 3600 ms Sea bottom	10 ANALOG DISPLAY
COMPAGNIE GENERALE DE GEOLOGIE		578 Date: MAY 31 '76 Checked	5 VELOCITY ANALYSIS (N)	Ship: GLORITA TIDE Shooting date: JAN 1976
			6 KMC CORRECTIONS (LINEAR INTERPOLATION BETWEEN VELOCITY FUNCTIONS)	Field recorder: SN 338 Filter: (8 125) Floating point: sampling 4 ms Streamer: 2400 m (Depth: 18 m) Groups: 48 (group interval: 50 m) Geophones type: HC 201 n° 48 / group 48 fold coverage Energy source: VAPORCHOC (depth: 18 m) Streamers: 48 340m SHORAN positioning

00178



VARIABLE FILTER	
997-11-50	VII
Frequency in Hz	
0.00	00
2.00	1500
4.00	1500
6.00	1500
8.00	1500
10.00	1500
12.00	1981
14.00	1626
16.00	1663
18.00	1717
20.00	1686
22.00	1912
24.00	2083
26.00	2086
28.00	2184
30.00	2270
32.00	2366
34.00	2482
36.00	2727
38.00	2946
40.00	3131
42.00	3296
44.00	3446
46.00	3583
48.00	3709
50.00	3824
52.00	3931
54.00	4036
56.00	4122
58.00	4207
60.00	4267
62.00	4362