

997-11-50 **AGIP**

OFFSHORE ITALIA
ZONA F

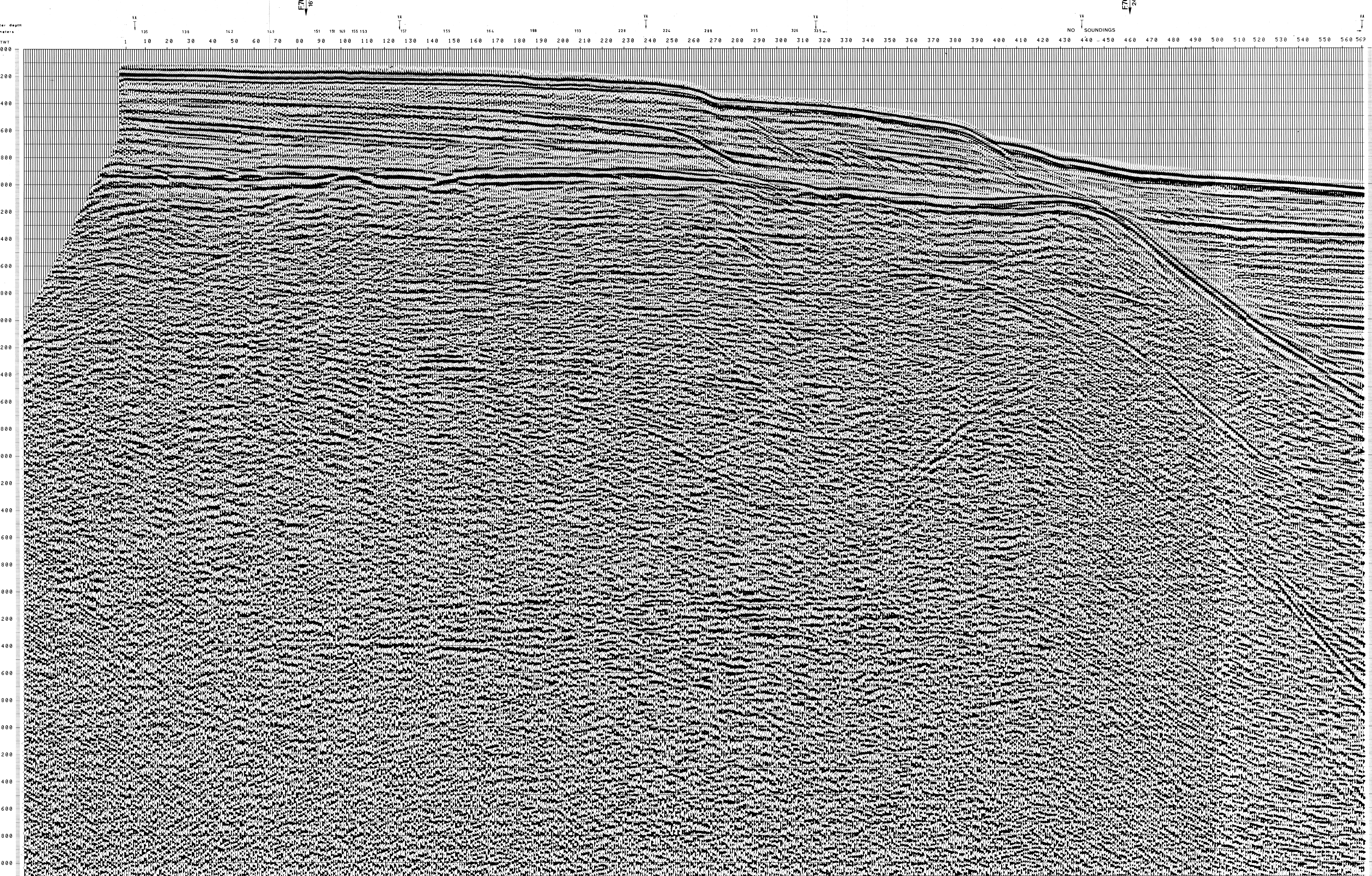
SW 1 LINEA F-76-31 NE 569

1 km

COMPAGNIE GÉNÉRALE
D'EXPLOITATION

DIGITAL PROCESSING P5	1 AMPLITUDE RECOVERY	7 STACK 4800 %	FIELD RECORDING
TIME ORIGIN: Source and cable depth	2 WAPCO stabilization by vaporchoc signal	8 TIME VARIANT FILTER (origin sea bottom)	Ship GLORITA TIDE Shooting date JAN 1976
STACK 4800 %	3 MUTES	9 TRACE EQUALIZATION	Field recorder SN 338 filter V8 125
Boat motion	4 DECONVOLUTION 240 m 10000 500 2300 ms J Below 1900 3600 m Sea bottom	10 ANALOG DISPLAY	Floating point sampling 4 ms
Date: JUNE 25 76	5 VELOCITY ANALYSIS (VA)		Streamer 2400 m (Depth 19 m)
Checked	6 RMS CORRECTIONS		groups 48 (group interval 50 m)
728	LINEAR INTERPOLATION BETWEEN VELOCITY FUNCTIONS		Geophones type HC201 n° 48 / group
			48 fold coverage
			Energy source VAPORCHOC (Depth 6 m)
			SP Tr1 Streamer Tr 48
			310 m SHORAN positioning

00159



TWT	*FROM SP*FROM SP*FROM SP*FROM SP*FROM SP*FROM SP*						*TO SP* TO SP* TO SP* TO SP* TO SP* TO SP*						VARIABLE FILTER
	1*	126*	317*	439*	568*	640*	4*	126*	317*	439*	568*	640*	
	AV. VEL. IN M/S						AV. VEL. IN M/S						997.11
000													
200	1520	1528	1500	1500	1500	1500							
400	1591	1629	1500	1500	1500	1500							
600	1702	1763	1593	1500	1500	1500							
800	2099	1875	1668	1500	1500	1500							
1000	2625	2175	1871	1571	1500	1500							
1200	3363	2698	2212	1748	1520	1512							
1400	3843	3164	2749	2041	1610	1579							
1600	4187	3593	3231	2223	1705	1628							
1800	4455	3927	3605	2409	1803	1662							
2000	4670	4194	3904	2628	1861	1731							
2200	4845	4413	4149	2871	1931	1804							
2400	4991	4595	4354	3056	2009	1872							
2600	5115	4749	4526	3298	2077	1985							
2800	5221	4882	4674	3505	2150	2082							
3000	5313	4996	4802	3685	2233	2138							
3200	5393	5096	4915	3842	2318	2219							
3400	5464	5185	5014	3981	2402	2302							
3600	5527	5263	5102	4104	2487	2389							
3800	5584	5334	5181	4214	2574	2476							
4000	5635	5397	5252	4314	2661	2565							
4200	5681	5454	5316	4403	2749	2656							
4400	5722	5506	5374	4485	2838	2749							
4600	5761	5554	5428	4560	2928	2844							
4800	5795	5597	5477	4628	3019	2941							
5000	5828	5637	5521	4691	3102	3039							
5200	5857	5674	5563	4749	3187	3139							
5400	5885	5709	5601	4803	3266	3241							
5600	5910	5741	5637	4852	3339	3346							
5800	5934	5770	5670	4896	3411	3454							
6000	5956	5798	5701	4934	3478	3564							