

997-11-50 **AGIP**

OFFSHORE ITALIA
ZONA F

SW 2432 LINEA F.76-29 NE 1821

1 km

COMPAGNIE GÉNÉRALES DE GÉOPHYSIQUE

DIGITAL PROCESSING P5

TIME ORIGIN: Source and cable depth

STACK 4800'

Boat motion

678 Date: JUNE 21, 76 Checked: [initials]

PROCESSING (SAMPLING RATE 4 m/s)

1. AMPLITUDE RECOVERY
2. WAPCO STABILIZATION BY VAPORCHOC SIGNAL
3. MDTING
4. DECONVOLUTION 240 MS
Windows: 500 2300 ms J. Below
1800 2400 ms Top bottom
5. VELOCITY ANALYSIS (VA)
6. NMO CORRECTIONS
LINEAR INTERPOLATION FUNCTIONS
BETWEEN VELOCITY FUNCTIONS
7. STACK 4800'
8. TIME VARIANT FILTER (Origin sea bottom)
9. TRACE EQUALIZATION
10. ANALOG DISPLAY

FIELD RECORDING (SAMPLING RATE 4 m/s)

Ship: GLORITA TIDE Shooting date: JAN 1976

Field recorder: SN 338 Filter: V8 125

Floating point: sampling 4 m/s

Streamer: 2400 m (base to -)

groups: 48 (group interval 50 m)

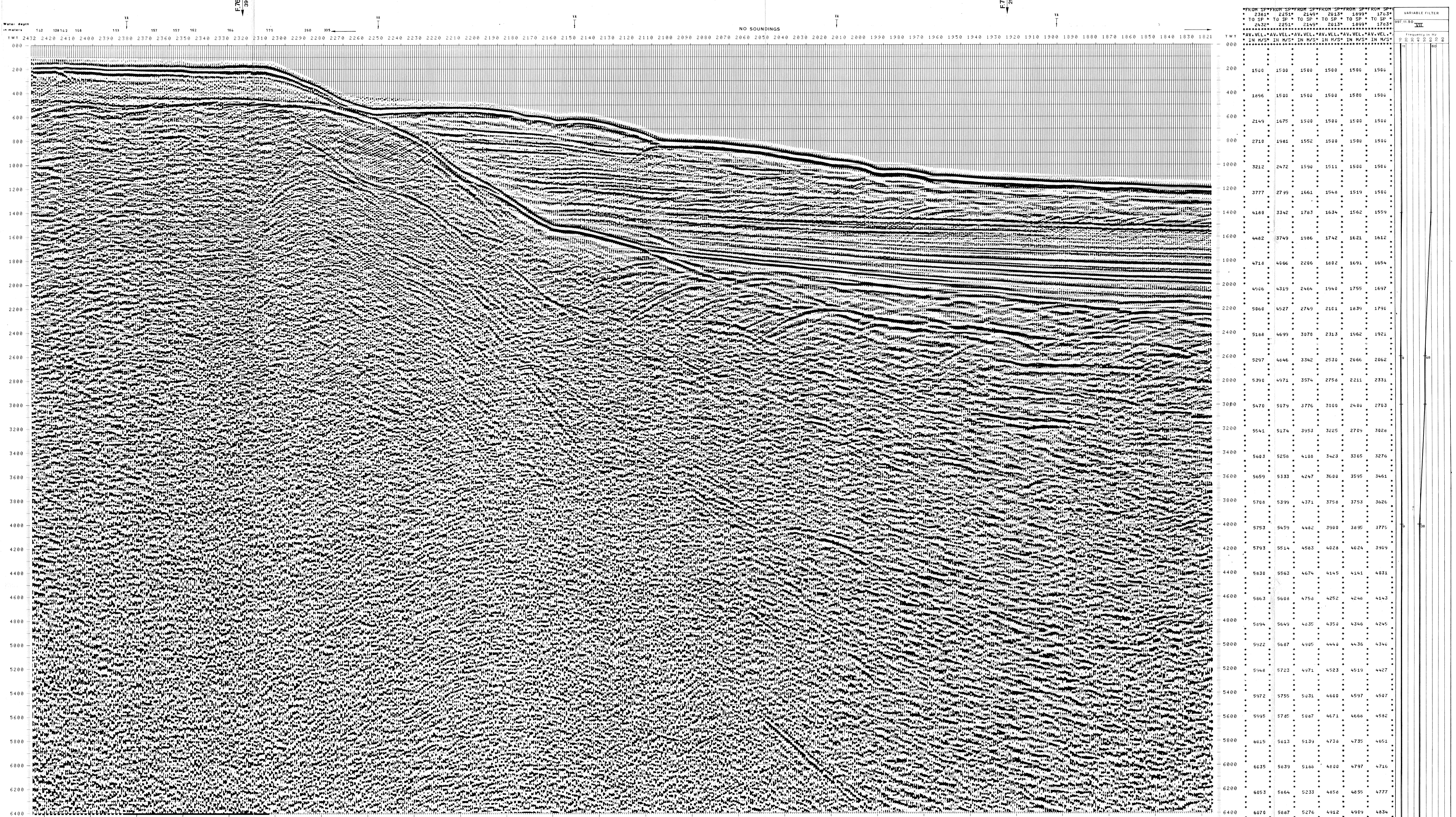
Geophones type: HC 201 n° 48 / group

48 fold coverage

Energy source: VAPORCHOC (depth: 32' 1/2' Streamer: 148)

310° SHORAN positioning

00157



FROM SP*	FROM SP*	FROM SP*	FROM SP*	FROM SP*	FROM SP*
2361*	2251*	2149*	2013*	1899*	1763*
TO SP*	TO SP*	TO SP*	TO SP*	TO SP*	TO SP*
2432*	2251*	2149*	2013*	1899*	1763*
AV. VEL. IN M/S					
IN M/S*	IN M/S*	IN M/S*	IN M/S*	IN M/S*	IN M/S*
1500	1500	1500	1500	1500	1500
1896	1500	1500	1500	1500	1500
2149	1675	1500	1500	1500	1500
2710	1981	1552	1500	1500	1500
3212	2472	1590	1511	1500	1500
3777	2799	1661	1548	1519	1500
4180	3342	1783	1634	1562	1559
4482	3749	1986	1742	1621	1612
4718	4166	2206	1822	1691	1654
4906	4319	2464	1940	1755	1697
5060	4527	2749	2101	1839	1790
5188	4699	3070	2313	1962	1921
5297	4846	3342	2530	2066	2062
5390	4971	3574	2758	2211	2331
5470	5079	3776	3000	2400	2703
5542	5174	3953	3225	2709	3028
5603	5258	4108	3423	3365	3276
5659	5333	4247	3600	3595	3461
5708	5399	4371	3758	3753	3626
5753	5459	4482	3900	3895	3775
5793	5514	4583	4028	4024	3909
5830	5563	4674	4145	4141	4031
5863	5608	4758	4252	4246	4143
5894	5649	4835	4350	4346	4245
5922	5687	4905	4440	4436	4340
5948	5723	4971	4523	4519	4427
5972	5755	5031	4600	4597	4507
5995	5785	5087	4671	4666	4582
6015	5813	5139	4738	4735	4651
6035	5839	5188	4800	4797	4716
6053	5864	5233	4856	4855	4777
6070	5887	5276	4912	4909	4834