

997-11-69

AGIP

OFFSHORE ITALIA  
ZONA F

SW 3088 LINEA F-76-23 NE 2560

DIGITAL PROCESSING P5

TIME ORIGIN: Source and cable depth

STACK 4800%

Boat motion

733 Date: JUNE 25-76 Checked

- 1. AMPLITUDE RECOVERY
- 2. WAPCO stabilization by vapochoc signal
- 3. MUTING
- 4. DECONVOLUTION 240 ms  
1900 - 2300 ms Below  
1900 - 2600 ms Sea bottom
- 5. VELOCITY ANALYSIS (VA)
- 6. NMO CORRECTIONS  
LINEAR INTERPOLATION  
BETWEEN VELOCITY FUNCTIONS

- 7. STACK 4800%
- 8. TIME VARIANT FILTER (Origin sea bottom)
- 9. TRACE EQUALIZATION
- 10. ANALOG DISPLAY

FIELD RECORDING  
SAMPLING RATE 4 ms

Ship: POLAR BJORN Shooting date: FEB /1976  
Field recorder: SN3388 filter: 1/8-125  
floating point sampling: 4 ms  
Streamer: 2400 m (Depth 19 m)  
groups: 48 (group interval: 50 m)  
Geophones type: HC 201 n: 48 / group  
48Fold coverage  
Energy source: VAPORCHOC (Depth 5 m)  
SP 12.1 Streamer 1248  
332m SHORAN positioning

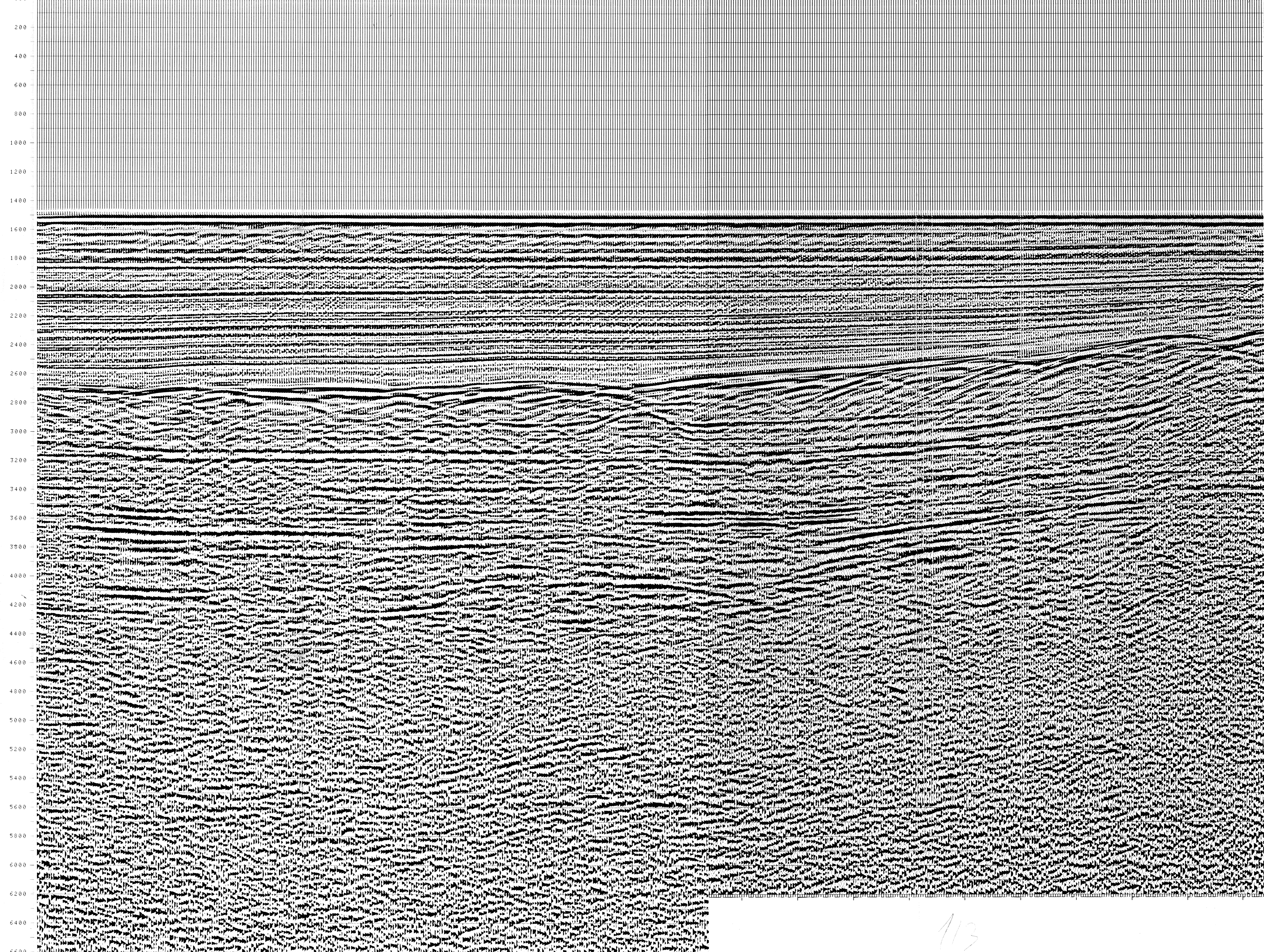
00139

F76.08  
2709

F76.06  
4306

Water depth in meters

TWT 3088 3080 3070 3060 3050 3040 3030 3020 3010 3000 2990 2980 2970 2960 2950 2940 2930 2920 2910 2900 2890 2880 2870 2860 2850 2840 2830 2820 2810 2800 2790 2780 2770 2760 2750 2740 2730 2720 2710 2700 2690 2680 2670 2660 2650 2640 2630 2620 2610 2600 2590 2580 2570 2560



FROM SP	FROM SP	FROM SP	FROM SP	FROM SP	FROM SP
3034	2909	2778	2667	2547	
TO SP	TO SP	TO SP	TO SP	TO SP	TO SP
3688	2909	2778	2667	2547	
AV. VEL.	AV. VEL.	AV. VEL.	AV. VEL.	AV. VEL.	AV. VEL.
IN M/S	IN M/S	IN M/S	IN M/S	IN M/S	IN M/S

TWT	1500	1500	1500	1500	1500
000					
200					
400					
600					
800					
1000					
1200					
1400					
1600	1516	1519	1519	1529	1516
1800	1550	1552	1551	1571	1550
2000	1591	1589	1592	1593	1590
2200	1657	1657	1653	1653	1620
2400	1723	1725	1711	1711	1670
2600	1796	1816	1797	1810	1767
2800	1893	1934	1900	1933	1961
3000	2009	2069	2005	2037	2043
3200	2137	2189	2114	2127	2165
3400	2292	2299	2219	2225	2235
3600	2430	2396	2313	2339	2190
3800	2714	2584	2439	2595	2535
4000	2969	2661	2752	2912	2779
4200	3199	3199	3222	3199	2999
4400	3327	3327	3386	3327	3136
4600	3443	3443	3499	3443	3260
4800	3549	3549	3604	3549	3376
5000	3647	3647	3699	3647	3479
5200	3738	3738	3788	3738	3576
5400	3822	3822	3870	3822	3666
5600	3899	3899	3946	3899	3750
5800	3972	3972	4017	3972	3827
6000	4039	4039	4083	4039	3899
6200	4103	4103	4145	4103	3967
6400	4162	4162	4203	4162	4031
6600	4218	4218	4257	4218	4090

VARIABLE FILTER

997.11 VII

Frequency in Hz

113