

997-11-50

AGIP

OFFSHORE ITALIA
ZONA F

NE 360 LINEA F-76-149 SW 1

1 km

COMPAGNIE GENERALE
DE GEOPHYSIQUE

DIGITAL PROCESSING P5

TIME ORIGIN: Source and cable depth

STACK 4800%

Boat motion

493

Date: APRIL 26, 76 Checked

PROCESSING
SAMPLING RATE 4ms

1 AMPLITUDE RECOVERY

2 WAPCO stabilization by vaporchoc signal

3 MUTING

4 DECONVOLUTION 240 ms
windows 500 - 2300 ms Below
1900 - 3600 ms Below sea bottom

5 VELOCITY ANALYSIS (VA)

6 NMO CORRECTIONS
(LINEAR INTERPOLATION
BETWEEN VELOCITY FUNCTIONS)

7 STACK 4800%

8 TIME VARIANT FILTER (Origin sea bottom)

9 TRACE EQUALIZATION

10 ANALOG DISPLAY

FIELD RECORDING
SAMPLING RATE 4ms

Ship GLORITA TIDE Shooting date: FEB 1975

Field recorder SN 338 filter 1/8 125

Floating point - sampling 4 ms

Streamer 2400 m (depth 15 m)

groups 48 (group interval 50 m)

Geophones type HC 201 n° 48 / group

48Fold coverage

Energy source VAPORCHOC (Depth m)

SP 174 Streamer 1748

330m MOTOROLA positioning

00403

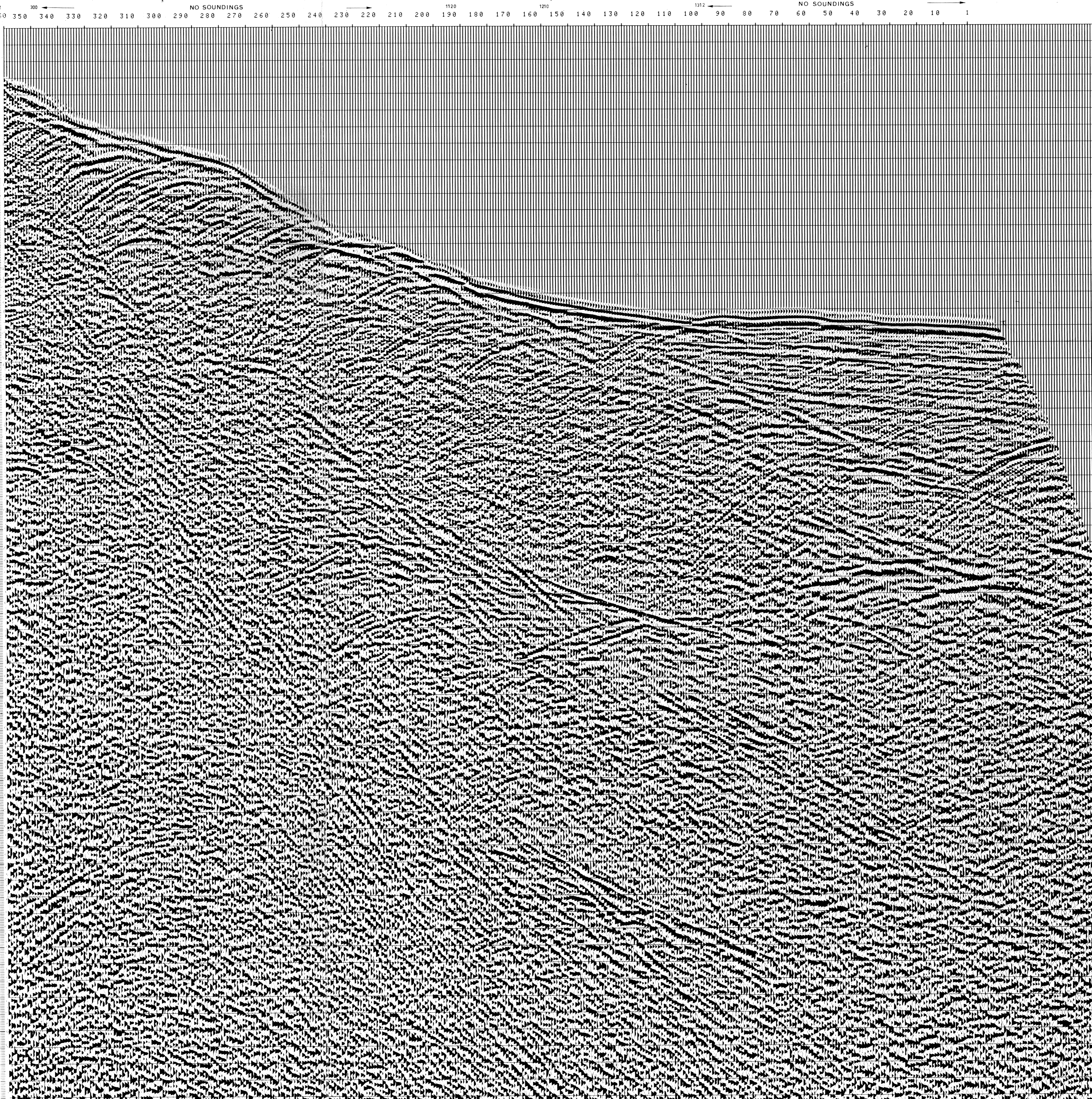
F-76-074B
117

F-76-072B
569

F-76-072C
1663

Water depth
in meters

TWT



TWT



FROM SP*	FROM SP*	FROM SP*	VARIABLE FILTER
299*	155*	1*	
TO SP*	TO SP*	TO SP*	
360*	157*	36*	VI
997 11 69			
AV. VEL.*	AV. VEL.*	AV. VEL.*	FREQUENCY IN HZ
IN M/S*	IN M/S*	IN M/S*	
000			
200	1500	1500	1500
400	1500	1500	1500
600	1500	1500	1500
800	1520	1500	1500
1000	1643	1500	1500
1200	1874	1500	1500
1400	1957	1500	1500
1600	2082	1500	1500
1800	2241	1545	1510
2000	2370	1598	1542
2200	2495	1674	1565
2400	2599	1761	1625
2600	2718	1896	1700
2800	2932	2059	1876
3000	3134	2199	2066
3200	3313	2359	2199
3400	3471	2499	2352
3600	3612	2656	2541
3800	3737	2796	2717
4000	3851	2939	2881
4200	3953	3085	3030
4400	4046	3217	3165
4600	4131	3338	3288
4800	4209	3449	3401
5000	4280	3551	3505
5200	4346	3645	3601
5400	4408	3732	3690
5600	4465	3813	3772
5800	4517	3889	3849
6000	4567	3959	3921
6200	4613	4025	3988
6400	4656	4087	4051