

997-11.69

**AGIP**

OFFSHORE ITALIA  
ZONA F

N.W.  
496

**LINEA F-76-141**

S.E.  
1

1 km

COMPAGNIE GENERALE  
DE GEOPHYSIQUE

**DIGITAL PROCESSING P5**

TIME ORIGIN: Source and cable depth

STACK 4800 %

Boat motion

534

Date MAY 11 76

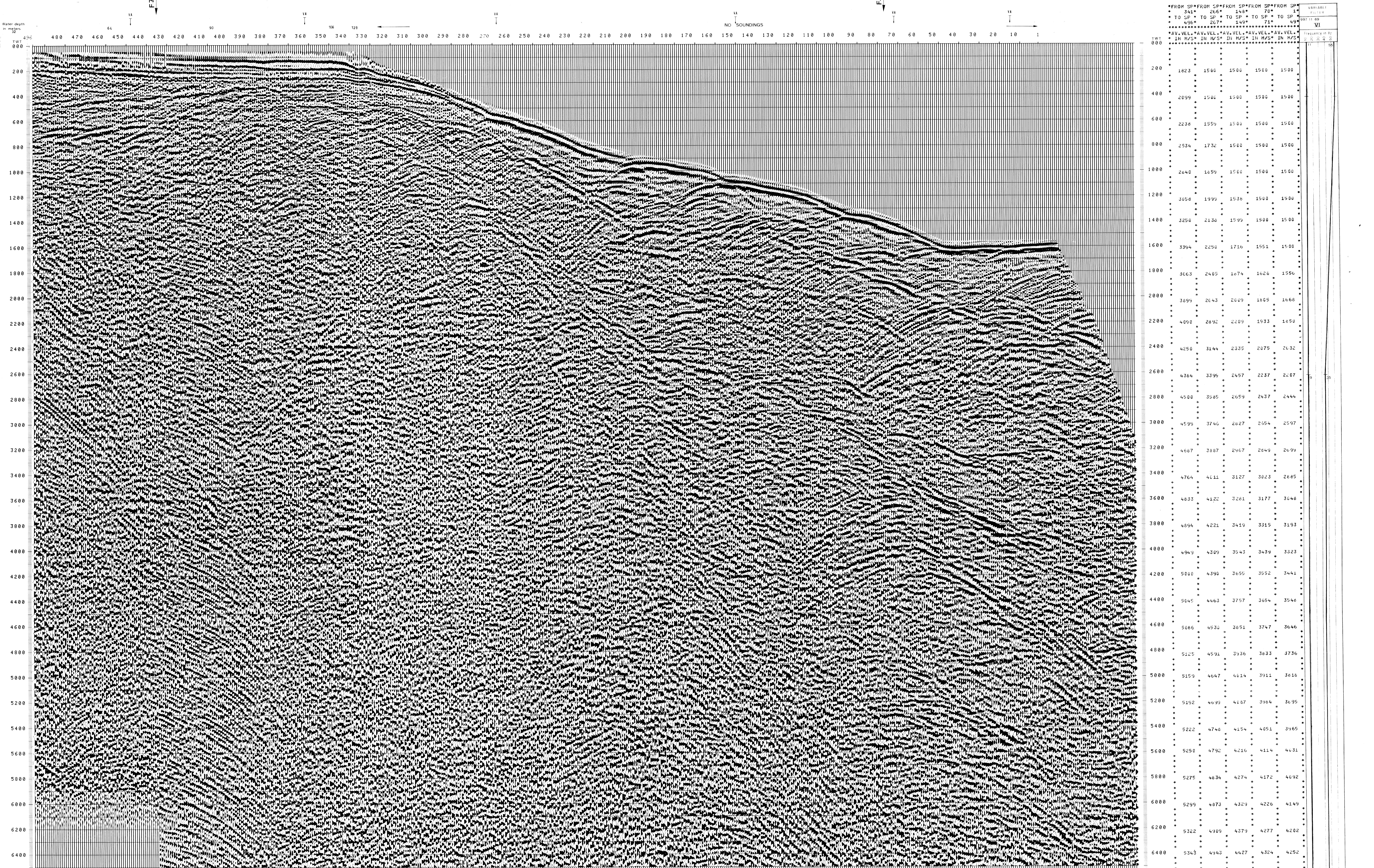
Checked RJB

**PROCESSING**  
SAMPLING RATE 4 m/s

1. AMPLITUDE RECOVERY
2. WAPCO stabilization by VAPORCHOC signal
3. MUTING
4. DECONVOLUTION 240 ms  
MIN TIME: 500 2300 ms J Below  
1300 3600 ms Sea bottom
5. VELOCITY ANALYSIS - VA
6. NMO CORRECTIONS  
LINEAR INTERPOLATION  
BETWEEN VELOCITY FUNCTIONS.

**FIELD RECORDING**  
SAMPLING RATE 4 m/s

7. STACK 4800 %
  8. TIME VARIANT FILTER (origin sea bottom)
  9. TRACE EQUALIZATION
  10. ANALOG DISPLAY
- Ship POLAR BJORN Shooting date: FEB (1976)  
Field recorder SN338B filter 1/8-125  
floating point sampling 4 ms  
Streamer 2400 m (depth 15 m)  
groups 48 (group interval 50 m)  
Geophones type HC 201 n° 48 / group  
48Fold coverage  
Energy source VAPORCHOC (Depth 5 m)  
SP tr 1 Streamer tr 48  
330m MOTOROLA positioning



TWT	341*	265*	149*	70*	1*
	TO SP*	TO SP*	TO SP*	TO SP*	TO SP*
	496*	267*	149*	71*	49*
*****					
	AV. VEL. IN M/S*	AV. VEL. IN M/S*	AV. VEL. IN M/S*	AV. VEL. IN M/S*	AV. VEL. IN M/S*
000	*	*	*	*	*
200	1823	1500	1500	1500	1500
400	2099	1500	1500	1500	1500
600	2238	1559	1500	1500	1500
800	2534	1732	1500	1500	1500
1000	2640	1659	1500	1500	1500
1200	3058	1999	1538	1500	1500
1400	3250	2130	1599	1500	1500
1600	3394	2250	1716	1951	1500
1800	3663	2405	1674	1626	1950
2000	3899	2643	2009	1805	1668
2200	4098	2892	2209	1933	1850
2400	4250	3144	2335	2075	2032
2600	4364	3396	2457	2237	2207
2800	4500	3585	2659	2437	2444
3000	4599	3746	2827	2554	2597
3200	4687	3887	2967	2849	2699
3400	4764	4011	3127	3023	2885
3600	4833	4122	3261	3177	3048
3800	4894	4221	3419	3315	3193
4000	4949	4309	3543	3439	3323
4200	5000	4390	3655	3552	3441
4400	5045	4463	3757	3654	3548
4600	5086	4530	3851	3747	3646
4800	5125	4591	3936	3833	3736
5000	5159	4647	4014	3911	3818
5200	5192	4699	4087	3984	3895
5400	5222	4748	4154	4051	3965
5600	5250	4792	4216	4114	4031
5800	5275	4834	4274	4172	4092
6000	5299	4873	4329	4226	4149
6200	5322	4909	4379	4277	4202
6400	5343	4943	4427	4324	4252