

997-11.69 **AGIP**

OFFSHORE ITALIA
ZONA F

NW 528 LINEA F.76.139 SE 1

1 km

COMPAGNIE GÉNÉRALE DE GÉOPHYSIQUE

DIGITAL PROCESSING P5

TIME ORIGIN: Source and cable depth

STACK 4800 %

Boat motion

502 Date: APRIL 28 '76 Checked

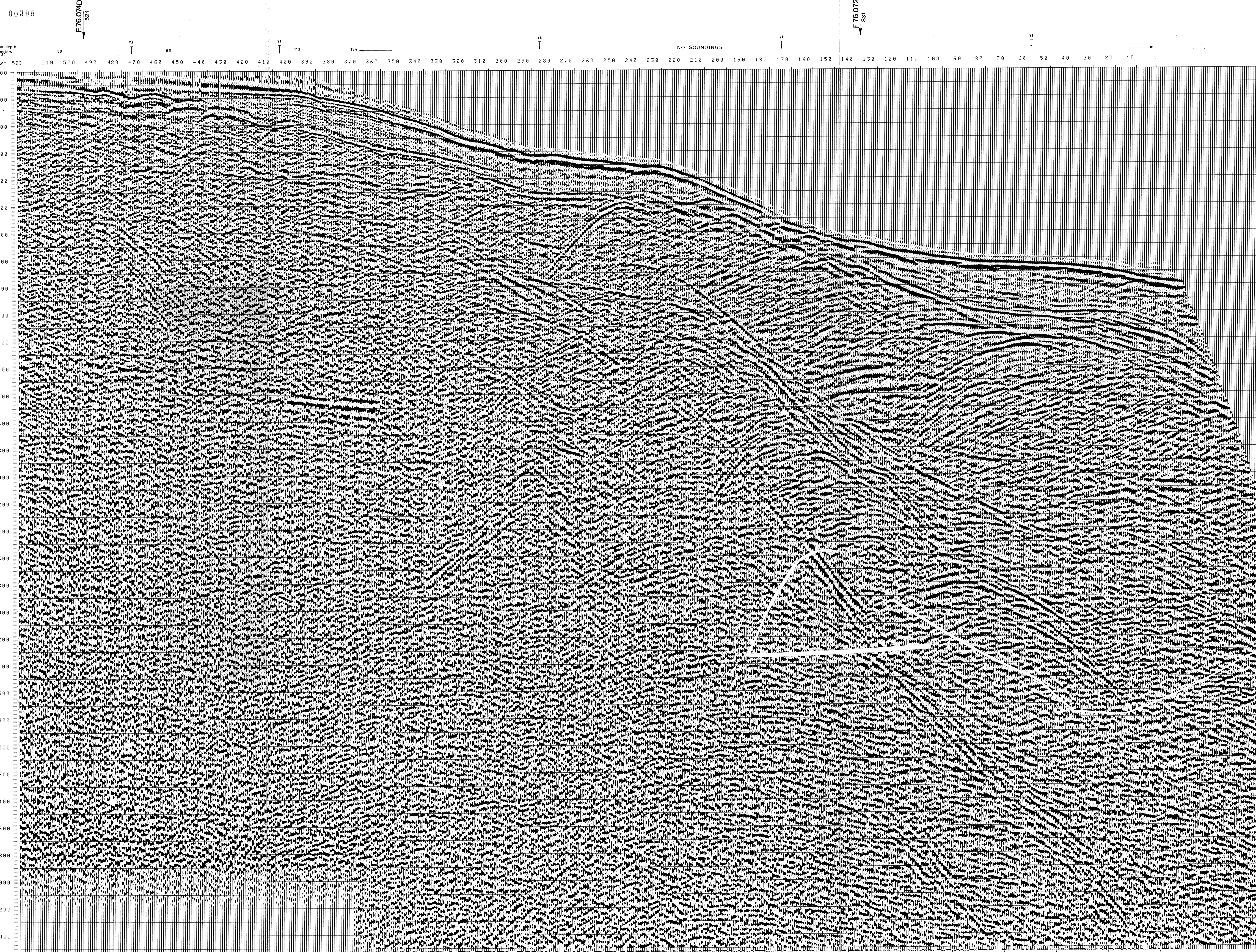
PROCESSING
SAMPLING RATE 4ms

1. AMPLITUDE RECOVERY
2. WAFD stabilization by vaportec signal
3. MDTIME
4. DECONVOLUTION 240 ms
WIREMS: 500 2300 ms J. Beta
1900 3600 ms J. Beta SYSTEM
5. VELOCITY ANALYSIS VIA
6. RMS CORRECTIONS
LINEAR INTERPOLATION
BETWEEN VELOCITY FUNCTIONS

7. STACK 4800 %
8. TIME VARIANT FILTER (Origin sea bottom)
9. TRACE EQUALIZATION
10. ANALOG DISPLAY

FIELD RECORDING
SAMPLING RATE 4ms

Ship: POLAR BJORN Shooting date: FEB/1976
Field recorder: SN3388 filter: 1/8-125
floating point sampling: 4 ms
Streamer: 2400 m (Depth 15 m)
groups: 48 (group interval 50 m)
Geophones type: HC 201 n° 48 / group
48Fold coverage
Energy source: VAPORCHOC (Depth 5 m)
SP 14.1 Streamer: 1248
330m MOTOROLA positioning



TWT	*FROM SP*FROM SP*FROM SP*FROM SP*FROM SP*FROM SP*				VI
	510*	473*	404*	285*	
	TO SP*	TO SP*	TO SP*	TO SP*	TO SP*
	528*	474*	406*	287*	174*
	57*	57*	57*	57*	57*
000					
200	1916	1664	1699	1500	1500
400	2199	1308	1973	1500	1500
600	2399	2180	2248	1500	1500
800	2649	2444	2444	1723	1500
1000	2799	2697	2620	1859	1500
1200	3244	2798	2779	1953	1558
1400	3561	2871	2957	2050	1749
1600	3799	3087	3156	2149	2003
1800	3999	3399	3319	2218	2199
2000	4199	3721	3653	2311	2285
2200	4363	3985	3925	2408	2355
2400	4500	4179	4139	2488	2435
2600	4615	4319	4282	2741	2564
2800	4714	4439	4405	2957	2674
3000	4799	4543	4511	3148	2929
3200	4875	4634	4604	3326	3161
3400	4941	4714	4686	3483	3328
3600	5000	4786	4759	3623	3476
3800	5052	4849	4824	3748	3609
4000	5099	4907	4883	3861	3729
4200	5142	4959	4936	3963	3837
4400	5181	5000	4985	4055	3935
4600	5217	5049	5029	4140	4025
4800	5250	5089	5069	4217	4107
5000	5279	5125	5106	4288	4183
5200	5307	5159	5141	4354	4253
5400	5333	5190	5173	4415	4317
5600	5357	5219	5202	4472	4373
5800	5379	5246	5230	4524	4433
6000	5399	5271	5255	4574	4486
6200	5419	5295	5279	4620	4534
6400	5437	5317	5302	4663	4580