

997-11-50 **AGIP**

OFFSHORE ITALIA
ZONA F

NW 6864 LINEA F-76-16 SE 6251

1 km

COMPAGNIE GENERALE DE GEOPHYSIQUE

DIGITAL PROCESSING P5

TIME ORIGIN: Source and cable depth

STACK 4800%

Boat motion

608 Date: JUNE 10 '76 Checked

PROCESSING SAMPLING RATE 4ms

- AMPLITUDE RECOVERY
- WAPCO stabilization by vaporchoc signal
- MUTING
- DECONVOLUTION 240 ms
Window: 500 - 2300 ms Below
1900 - 3600 ms sea bottom
- VELOCITY ANALYSIS (VA)
- KMO CORRECTIONS
(LINEAR INTERPOLATION BETWEEN VELOCITY FUNCTIONS)
- STACK 4800%
- TIME VARIANT FILTER (Origin sea bottom)
- TRACE EQUALIZATION
- ANALOG DISPLAY

FIELD RECORDING SAMPLING RATE 4ms

Ship GLORITA TIDE Shooting date: JAN /1976

Field recorder: SN 338 Filter: V8.125

Floating point: sampling 4 ms

Streamer: 2400 m (Depth: 20 m)

groups: 48 (group interval: 50 m)

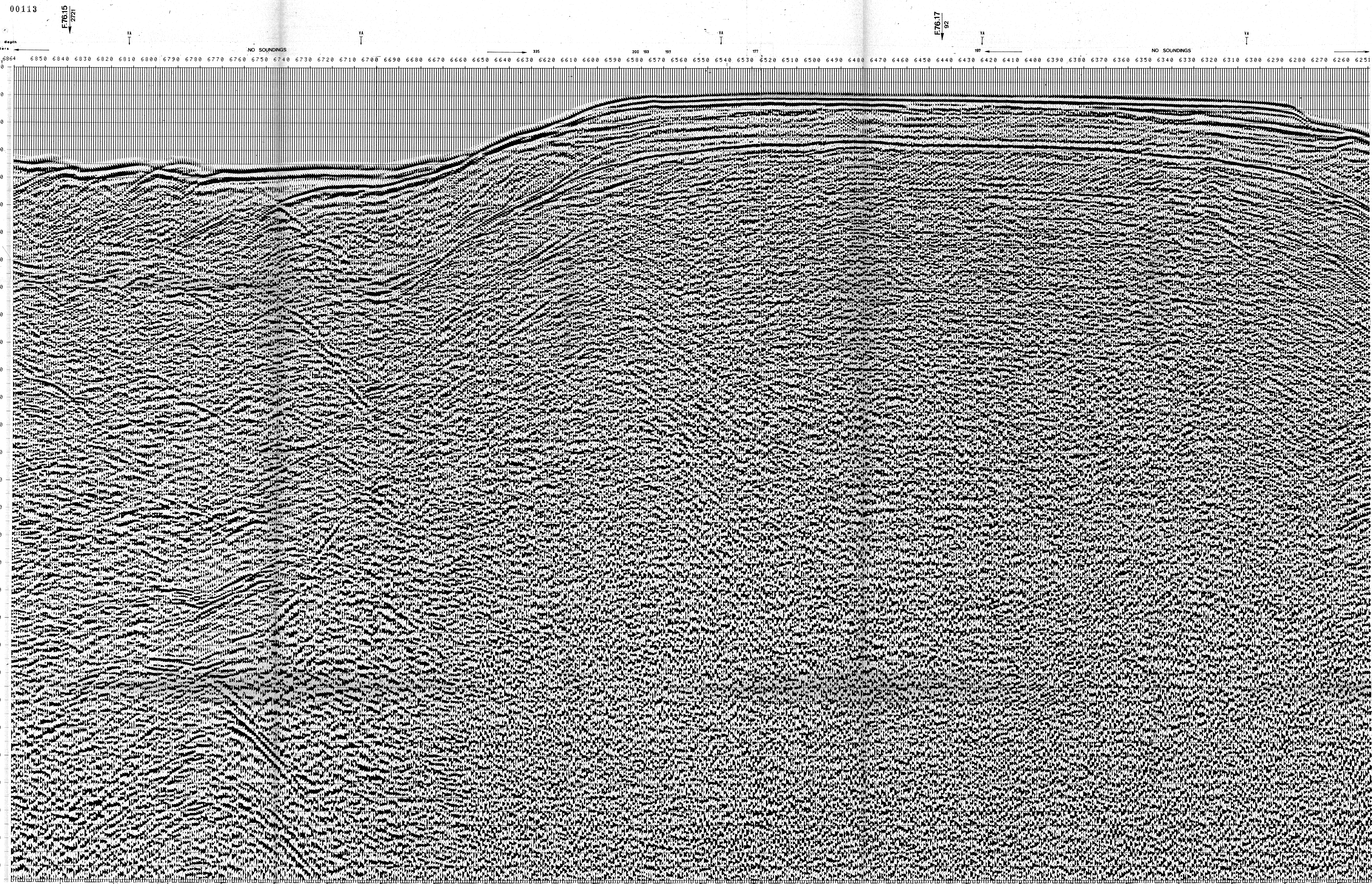
Geophones type: HC 201 n° 48 / group

48 fold coverage

Energy source: VAPORCHOC (Depth: 1-48)

SP Tr1 Streamer (Depth: 1-48)

340m SHORAN positioning



TW 800	*FROM SP*FROM SP*FROM SP*FROM SP*FROM SP*FROM SP*						*AV.VEL.*AV.VEL.*AV.VEL.*AV.VEL.*AV.VEL.*AV.VEL.*						VARIABLE FILTER
	6799*	6690*	6543*	6425*	6275*	6183*	TO SP*	TO SP*	TO SP*	TO SP*	TO SP*	TO SP*	
	6864*	8727*	6587*	6425*	6365*	6183*							VII
	IN M/S*						IN M/S*						Frequency in Hz
	10	20	30	40	50	60							60
200	1500	1500	1500	1500	1500	1500							
400	1500	1500	1695	1724	1754	1516							
600	1500	1900	1860	1907	1940	1598							
800	1609	1584	2282	2305	2245	1670							
1000	1744	1788	2687	2619	2694	1728							
1200	1903	1856	2999	3065	2971	1945							
1400	2202	2216	3514	3547	3449	2158							
1600	2426	2541	3899	3328	3643	2556							
1800	2600	2816	4199	4225	4149	2905							
2000	2792	3029	4439	4462	4394	3274							
2200	3001	3409	4636	4657	4595	3577							
2400	3301	3674	4799	4819	4762	3829							
2600	3555	3839	5338	4926	4903	4042							
2800	3772	4092	5057	5073	5024	4224							
3000	3961	4259	5159	5175	5129	4383							
3200	4126	4406	5249	5264	5221	4521							
3400	4271	4535	5329	5342	5302	4644							
3600	4401	4649	5399	5412	5374	4752							
3800	4516	4752	5463	5475	5439	4849							
4000	4620	4844	5514	5531	5497	4937							
4200	4715	4928	5571	5582	5549	5016							
4400	4800	5004	5618	5628	5597	5086							
4600	4879	5073	5660	5670	5641	5154							
4800	4950	5137	5699	5709	5681	5214							
5000	5016	5195	5735	5745	5717	5269							
5200	5077	5249	5769	5778	5751	5321							
5400	5134	5299	5799	5808	5781	5366							
5600	5186	5346	5828	5836	5812	5412							
5800	5235	5389	5855	5863	5839	5453							