

997-11-50

AGIP

OFFSHORE ITALIA
ZONA F

NW 5624 LINEA F-76-16 SE 5041

1 km

COMPAGNIE GENERALE DE GEOPHYSIQUE

DIGITAL PROCESSING P5

TIME ORIGIN: Source and cable depth

STACK 4800%

Boat motion

606 Date: JUNE 9 '76 Checked

PROCESSING SAMPLING RATE 4ms

- 1. AMPLITUDE RECOVERY
- 2. WAPCO stabilization by vaporchoc signal
- 3. MUTING
- 4. DECONVOLUTION 240 ms
width 300 2300 ms J Below
1900 3600 ms sea bottom
- 5. VELOCITY ANALYSIS (VA)
- 6. NMO CORRECTIONS
LINEAR INTERPOLATION
BETWEEN VELOCITY FUNCTIONS

- 7. STACK 4800%
- 8. TIME VARIANT FILTER (origin sea bottom)
- 9. TRACE EQUALIZATION
- 10. ANALOG DISPLAY

FIELD RECORDING SAMPLING RATE 4ms

Ship: GLORITA TIDE Shooting date: JAN 1976
 Field recorder: SN 338 Filter: V8125
 Floating point: sampling 4 ms
 Streamer: 2400 m (Depth 18 m)
 groups 48 (group interval 50 m)
 Geophones type: HC 201 n° 48/group
 48Fold coverage
 Energy source: VAPORCHOC (Depth 6 m)
 SP 1rs Streamer 1r48
 340m SHORAN positioning

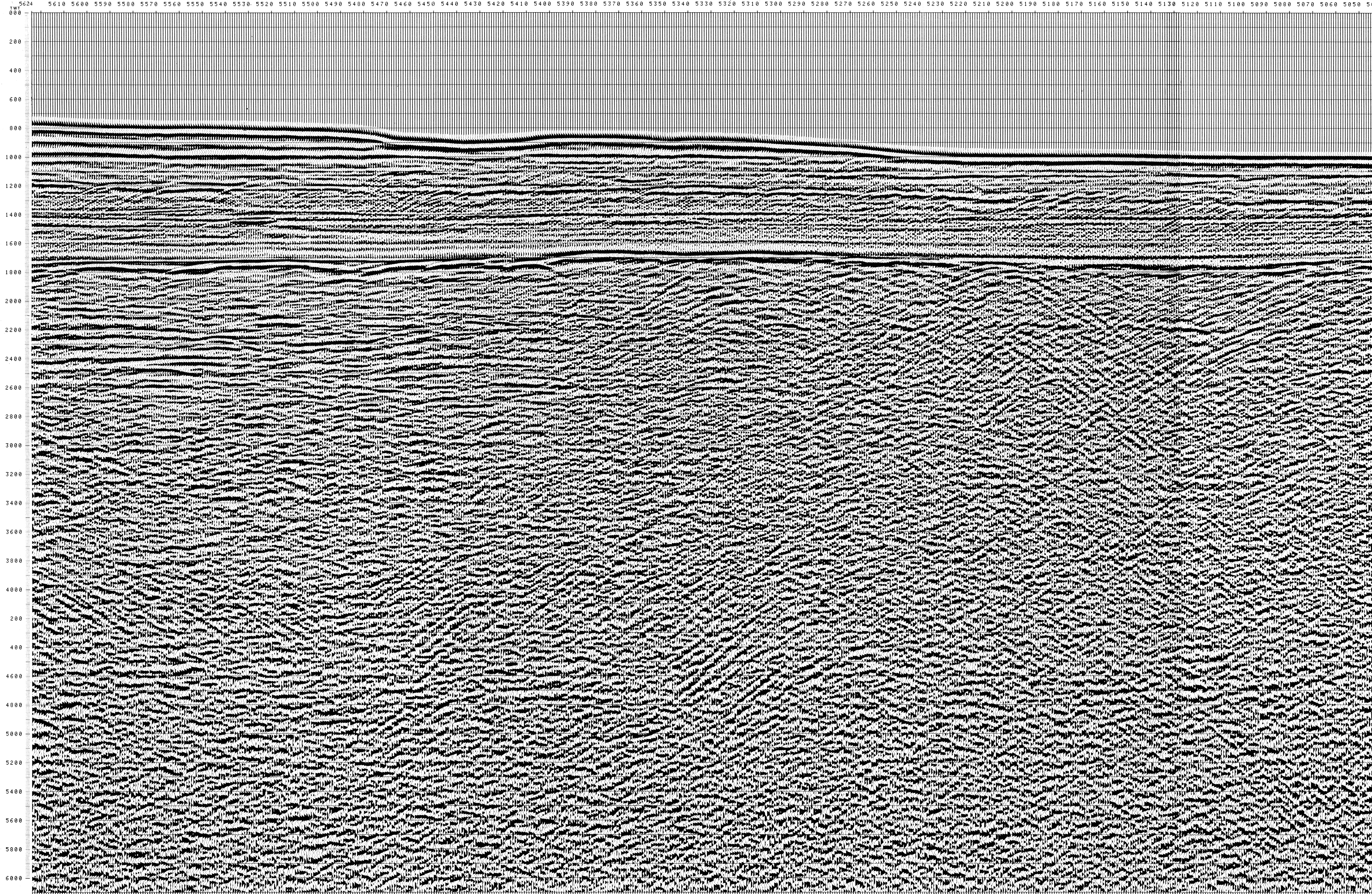
00111

F76.21
345

F76.23
1633

Water depth in meters
5624 5610 5600 5590 5580 5570 5560 5550 5540 5530 5520 5510 5500 5490 5480 5470 5460 5450 5440 5430 5420 5410 5400 5390 5380 5370 5360 5350 5340 5330 5320 5310 5300 5290 5280 5270 5260 5250 5240 5230 5220 5210 5200 5190 5180 5170 5160 5150 5140 5130 5120 5110 5100 5090 5080 5070 5060 5050 5041

NO SOUNDINGS



TWT	*FROM SP*FROM SP*FROM SP*FROM SP*				VARIABLE FILTER
	5711*	5585*	5111*	4626*	
000	1500	1500	1500	1500	11
200	1500	1500	1500	1500	60
400	1500	1500	1500	1500	
600	1500	1500	1500	1500	
800	1525	1530	1500	1500	
1000	1605	1622	1500	1558	
1200	1679	1651	1552	1617	
1400	1712	1702	1596	1669	
1600	1886	1756	1694	1737	
1800	2041	1913	1787	1942	
2000	2276	2096	2022	2140	
2200	2483	2258	2312	2340	
2400	2748	2399	2554	2645	
2600	2999	2938	3049	3092	
2800	3257	3224	3303	3343	
3000	3479	3449	3523	3560	
3200	3674	3646	3715	3750	
3400	3847	3820	3885	3917	
3600	3999	3974	4036	4066	
3800	4136	4113	4171	4200	
4000	4259	4237	4292	4320	
4200	4371	4349	4402	4428	
4400	4472	4452	4502	4527	
4600	4565	4545	4593	4617	
4800	4649	4631	4677	4700	
5000	4727	4709	4753	4776	
5200	4799	4782	4824	4846	
5400	4866	4859	4880	4911	
5600	4928	4912	4951	4971	
5800	4986	4970	5008	5027	
6000	5039	5024	5061	5080	