

997-11-50 **AGIP**

OFFSHORE ITALIA
ZONA F

NW 4430 LINEA F-76-16 SE 3849

1 km

COMPAGNIE GENERALE DE GÉOPHYSIQUE

DIGITAL PROCESSING P5

TIME ORIGIN: Source and cable depth

STACK 4800%

Boat motion

604 Date: JUNE 9 .76 Checked:

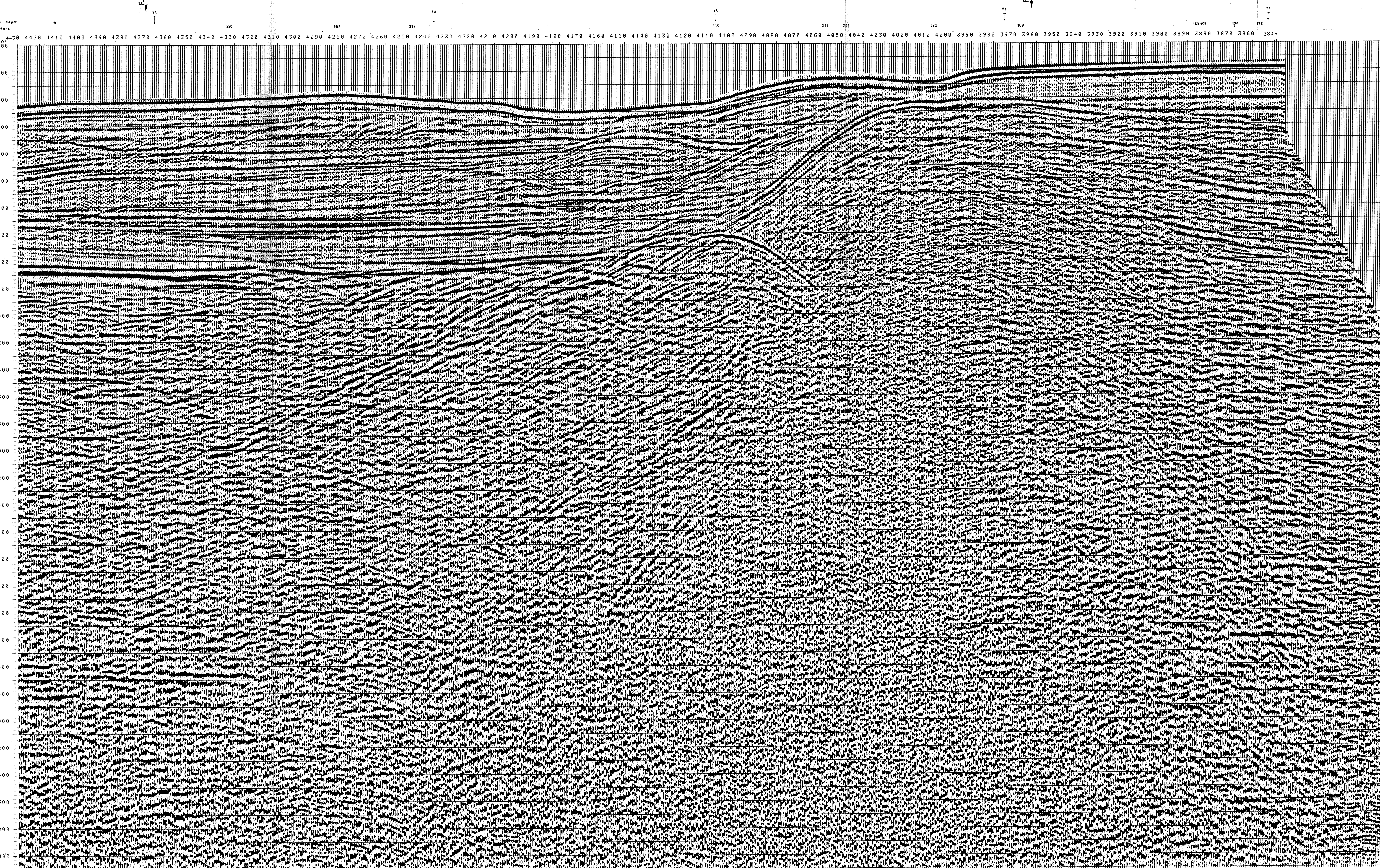
1. AMPLITUDE RECOVERY
2. WAPOR (stabilization by vaporchoc signal)
3. MUTING
4. DECONVOLUTION 240 ms
WIREMS: 500 - 2300 ms J. Below
1900 - 2400 ms Top bottom
5. VELOCITY ANALYSIS (VA)
6. NMO CORRECTIONS
(LINEAR INTERPOLATION BETWEEN VELOCITY FUNCTIONS)

7. STACK 4800 %
8. TIME VARIANT FILTER (origin sea bottom)
9. TRACE EQUALIZATION
10. ANALOG DISPLAY

FIELD RECORDING
SAMPLING RATE 4ms

Ship: GLORITA TIDE Shooting date: JAN (1976)
Field recorder: SN 338 Filter: 10/125
Floating point: sampling 4 ms
Streamer: 2400 m (Depth 10 m)
groups: 48 (group interval 50 m)
Geophones type: HC 201 n° 48 / group
48 fold coverage
Energy source: VAPORCHOC (Depth: 1)
34 m Streamer 1:48
340m SHORAN positioning

00109



TWT	FROM SP*FROM SP*FROM SP*FROM SP				VARIABLE FILTER
	TO SP*	TO SP*	TO SP*	TO SP*	
000	4305*	4230*	4167*	3973*	3602*
200	1500	1500	1500	1577	1500
400	1500	1500	1500	1794	1765
600	1568	1583	1591	2117	1679
800	1619	1694	1637	2330	2211
1000	1724	1780	1723	2794	2634
1200	1796	1834	1695	3224	3224
1400	1907	1896	2042	3707	3707
1600	2022	1967	2361	4068	4068
1800	2136	2167	2577	4349	4349
2000	2249	2456	2815	4574	4574
2200	2515	2967	3107	4759	4759
2400	2632	3331	3338	4912	4912
2600	3120	3582	3644	5042	5042
2800	3368	3798	3655	5153	5153
3000	3564	3984	4036	5249	5249
3200	3772	4248	4196	5334	5334
3400	3936	4292	4340	5408	5408
3600	4086	4420	4465	5474	5474
3800	4219	4535	4577	5534	5534
4000	4336	4638	4679	5587	5587
4200	4445	4732	4770	5635	5635
4400	4543	4810	4853	5679	5679
4600	4633	4894	4929	5719	5719
4800	4715	4965	4999	5756	5756
5000	4790	5030	5063	5789	5789
5200	4860	5091	5122	5821	5821
5400	4924	5147	5177	5849	5849
5600	4984	5199	5227	5876	5876
5800	5040	5247	5275	5901	5901
6000	5092	5292	5314	5924	5924