

997-11-50

AGIP

OFFSHORE ITALIA
ZONA F

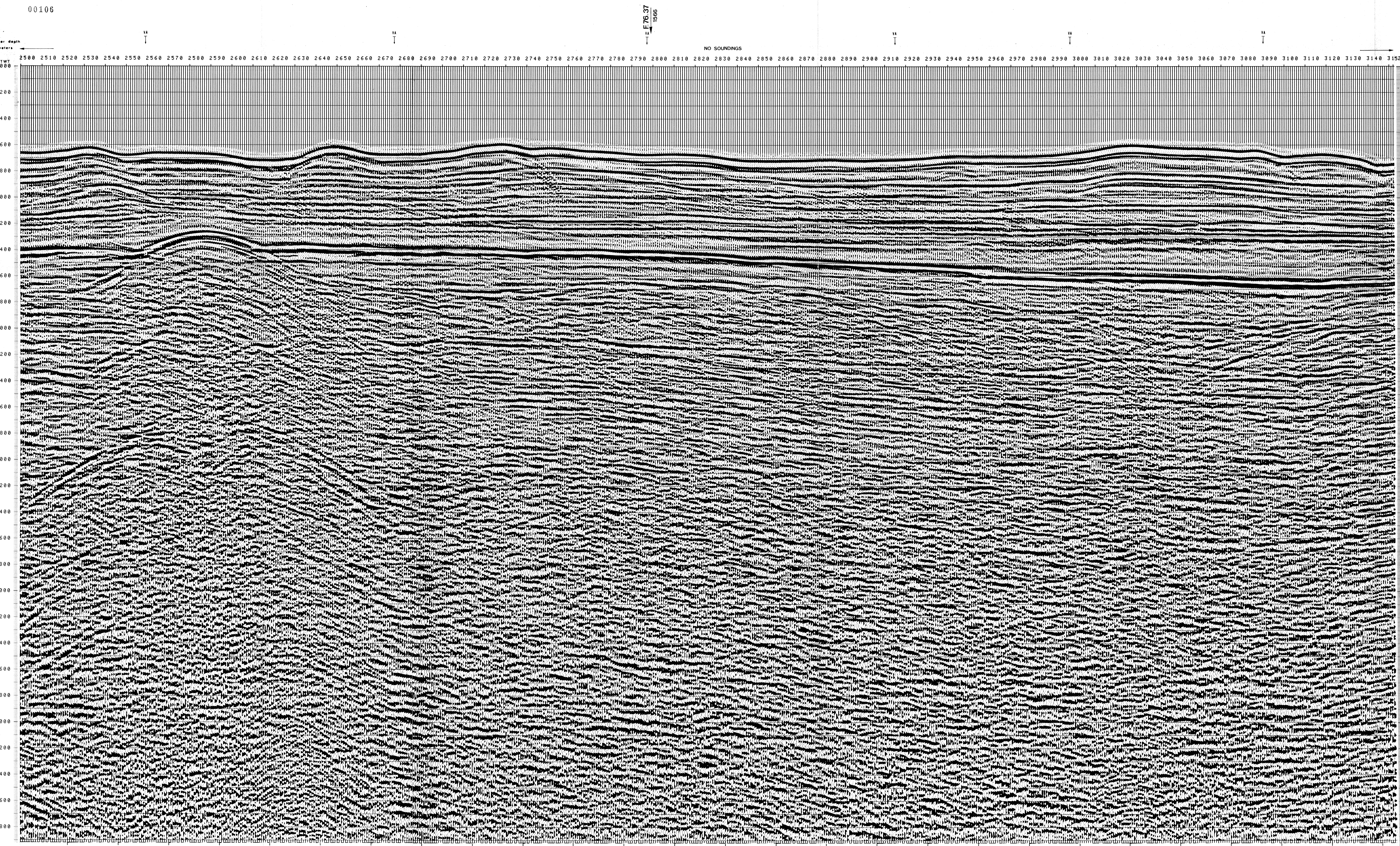
NW 2500 LINEA F.76-16 SE 3152

1 km

COMPAGNIE GENERALE DE GEOPHYSIQUE

| | | | |
|--|---|---|---|
| DIGITAL PROCESSING P5 TIME ORIGIN: Source and cable depth STACK 4800% Boat motion | 1 AMPLITUDE RECOVERY | 7 STACK 4800 % | FIELD RECORDING SAMPLING RATE 4 Hz Ship GLORITA TIDE Shooting date: JAN /1976 Field recorder: SN 338 filter V8 125 Floating point: sampling 4 ms Streamer 2400 m (depth 10 m) groups 48 (group interval 50 m) Geophones type HC 201 n° 48 / group 48Fold coverage Energy source VAPORCHOC (depth 6 m) SF 1st Streamer 1:48 310m SHORAN positioning |
| | 2 WAF (stabilization by vaporchoc signal) | 8 TIME VARIANT FILTER (Origin sea bottom) | |
| 3 NOISE | 9 TRACE EQUALIZATION | | |
| 4 DECONVOLUTION 240 ms *stack 300 *3300 ms J Below 1900 *3600 ms sea bottom | 10 ANALOG DISPLAY | | |
| 5 VELOCITY ANALYSIS (VA) | | | |
| 6 XMS CORRECTIONS (LINEAR INTERPOLATION BETWEEN VELOCITY FUNCTIONS) | | | |

611 Date: JUNE 4 '76 Checked: *RA*



| TWT 000 | *FROM SP*FROM SP*FROM SP | | | VARIABLE FILTER |
|------------|--------------------------|-------|-------|-----------------|
| | 2441* | 2997* | 3089* | |
| 000 | 2441* | 2997* | 3089* | VI |
| 200 | 1500 | 1500 | 1500 | |
| 400 | 1500 | 1500 | 1500 | |
| 600 | 1500 | 1500 | 1500 | |
| 800 | 1552 | 1541 | 1557 | |
| 1000 | 1636 | 1600 | 1618 | |
| 1200 | 1705 | 1686 | 1712 | |
| 1400 | 1802 | 1825 | 1831 | |
| 1600 | 1993 | 1960 | 1952 | |
| 1800 | 2164 | 2120 | 2170 | |
| 2000 | 2376 | 2300 | 2412 | |
| 2200 | 2637 | 2497 | 2690 | |
| 2400 | 2919 | 2814 | 2867 | |
| 2600 | 3204 | 3103 | 3034 | |
| 2800 | 3447 | 3353 | 3289 | |
| 3000 | 3657 | 3569 | 3509 | |
| 3200 | 3841 | 3759 | 3703 | |
| 3400 | 4003 | 3926 | 3873 | |
| 3600 | 4147 | 4074 | 4024 | |
| 3800 | 4277 | 4207 | 4160 | |
| 4000 | 4393 | 4327 | 4282 | |
| 4200 | 4498 | 4435 | 4392 | |
| 4400 | 4593 | 4534 | 4493 | |
| 4600 | 4681 | 4623 | 4584 | |
| 4800 | 4760 | 4706 | 4668 | |
| 5000 | 4834 | 4781 | 4745 | |
| 5200 | 4902 | 4851 | 4817 | |
| 5400 | 4965 | 4916 | 4883 | |
| 5600 | 5023 | 4976 | 4944 | |
| 5800 | 5076 | 5032 | 5004 | |