

997-11-50

AGIP

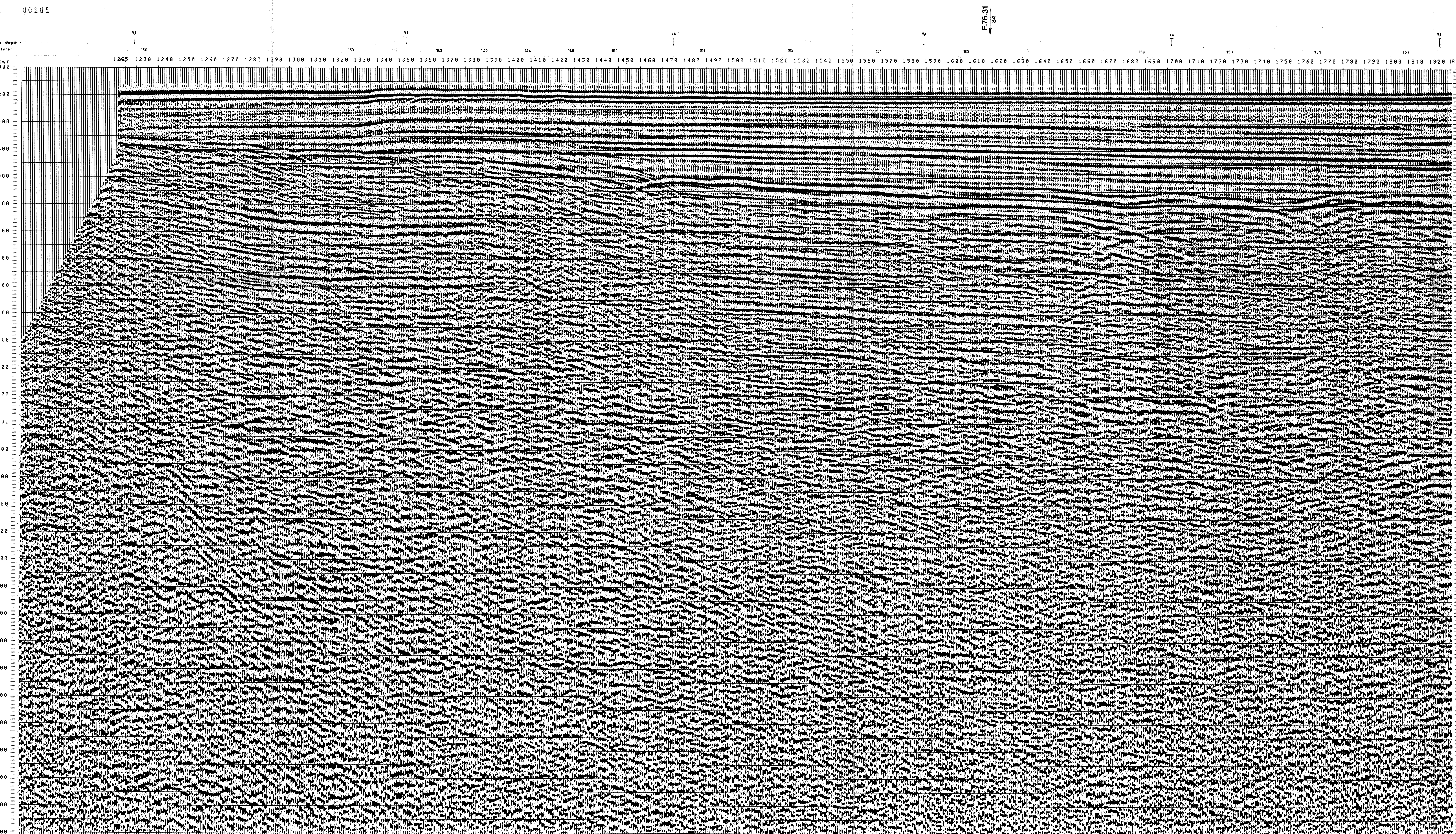
OFFSHORE ITALIA
ZONA F

NW 1225 LINEA F-76-16 SE 1829

1 km

COMPAGNIE GENERALE DE GEOPHYSIQUE

DIGITAL PROCESSING P5 TIME ORIGIN: Source and cable depth STACK 4800% Boat motion	1 AMPLITUDE RECOVERY	7 STACK 4800 %	FIELD RECORDING SAMPLING RATE 4 m/s
	2 WAVE STABILIZATION (by vaporchoc signal)	8 TIME VARIANT FILTER (Origin sea bottom)	Ship GLORITA TIDE Shooting date JAN /1976
	3 MUTING	9 TRACE EQUALIZATION	Field recorder SN 338 filter VB 125
	4 DECONVOLUTION 240 ms widths 500 - 2300 ms J Below 1900 - 3600 ms T sea bottom	10 ANALOG DISPLAY	Floating point, sampling 4 ms
	5 VELOCITY ANALYSIS (VA)		Streamer 2400 m (depth 19 m)
	6 NMO CORRECTIONS (LINEAR INTERPOLATION BETWEEN VELOCITY FUNCTIONS)		groups 48 (group interval 50 m)
609 Date: JUNE 4 '76 Checked: <i>RJG</i>			Geophones type HC 201 n° 48 / group
			48 fold coverage
			Energy source VAPORCHOC (depth 6 m)
			SP Tr1 Streamer Tr 48
			310m SHORAN positioning



TWT	1176*	1352*	1474*	1588*	1701*	1823*	1943*	VARIABLE FILTER
000	1176*	1352*	1474*	1588*	1701*	1823*	1943*	997/11/50 VII
200	1500	1500	1500	1500	1500	1500	1500	0 2 2 2 2 2 2
400	2053	1620	1559	1566	1645	1564	1574	
600	2237	1794	1590	1582	1708	1634	1626	
800	2329	1961	1644	1799	1654	1823	1742	
1000	2634	2493	2296	2136	2159	2016	1956	
1200	3224	3054	2956	2619	2559	2519	2126	
1400	3707	3560	3476	3064	2999	2999	2461	
1600	4068	3940	3868	3506	3449	3449	2909	
1800	4349	4236	4172	3849	3799	3799	3304	
2000	4574	4472	4414	4124	4079	4079	3634	
2200	4759	4665	4618	4349	4309	4309	3983	
2400	4912	4827	4779	4537	4499	4499	4126	
2600	5042	4963	4919	4696	4661	4661	4316	
2800	5153	5080	5039	4832	4799	4799	4481	
3000	5249	5161	5143	4949	4919	4919	4622	
3200	5334	5270	5234	5053	5024	5024	4746	
3400	5408	5348	5314	5144	5117	5117	4855	
3600	5474	5416	5386	5224	5199	5199	4952	
3800	5534	5460	5445	5297	5273	5273	5039	
4000	5587	5516	5507	5362	5339	5339	5117	
4200	5635	5586	5559	5421	5399	5399	5187	
4400	5679	5632	5606	5474	5454	5454	5251	
4600	5719	5674	5649	5523	5504	5504	5310	
4800	5756	5713	5685	5568	5549	5549	5364	
5000	5789	5746	5725	5609	5591	5591	5413	
5200	5821	5781	5759	5648	5630	5630	5499	
5400	5849	5812	5794	5683	5666	5666	5591	
5600	5876	5844	5819	5716	5699	5699	5540	